

MS-D 30-165 white Dante

- powerful sound
- IEEE 802.3at/PoE plus
- high-impact ABS housing



25

ic audio GmbH, Boehringerstraße 14a,
D-68307 Mannheim, Germany

CE-Symbol gemäß Richtlinie 93/68EWG

With our new Dante speakers, you can easily and cost-effectively implement audio-over-IP installations. The MS-D 30-165 Dante monitor speaker is an active 2-way bass reflex speaker with exceptional acoustic properties.

With a 30W power output and a highly efficient Class D amplifier, it delivers powerful crystal-clear sound that will impress even the most demanding listeners. The 6.5" woofer and 1" tweeter ensure impressive sound fidelity across the entire frequency range of 77 to 21.500 Hz, reaching a maximum sound pressure level of 104,8 dB.

Thanks to the IEEE 802.3at/PoE plus RJ45 connector, the speaker can be easily integrated into existing networks. In addition to the power supply via PoE, a local 24V DC input is also possible, offering installation flexibility. The impact-resistant ABS housing offers robustness for demanding environments.

A wall bracket is included in the delivery, which makes installation particularly easy.

Product	MS-D 30-165 white Dante
Artikel Nr.	20248566

Acoustics

Power	30W
Speaker ø	165 mm
Frequency Range	85 - 23.500 Hz
Frequency Response	63 - 25.000 Hz
SPL 1W/1m, peak	94,3 dB
SPL 1W/4m, peak	82,3 dB
SPL Pmax/4m, peak	97,0 dB
SPL Pmax/1m, peak	109,0 dB
SPL IEC268-5, Pmax/1m	107,2 dB
Sensitivity IEC268-5, 1W/1m	92,5 dB
Dispersion -6dB, 500Hz	h/v 197°/187°
Dispersion -6dB, 1KHz	h/v 125°/80°
Dispersion -6dB, 2KHz	h/v 84°/123°
Dispersion -6dB, 4KHz	h/v 113°/234°

Connections and Housing

Connector	RJ45
Temperature Range	-10 / +55 °C
Weight (net)	3,9 kg
Housing	ABS
Colour	RAL 9016
Mounting	Swivel bracket
IP Rating	IP21

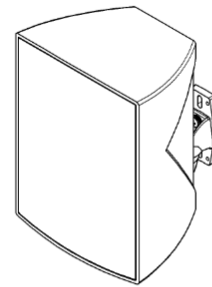
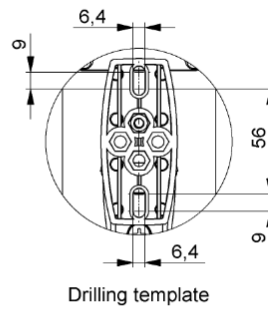
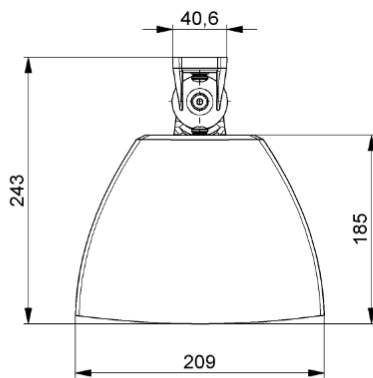
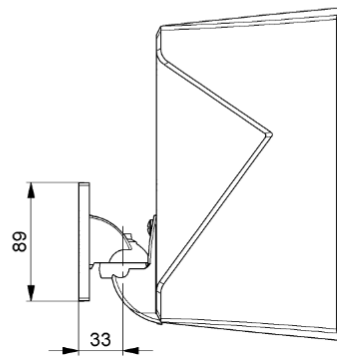
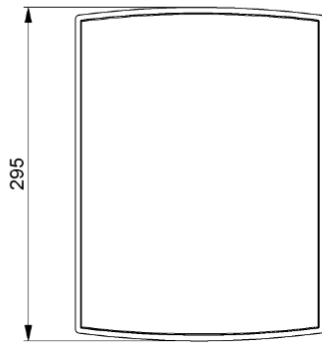
Product Attributes



Technical Drawing



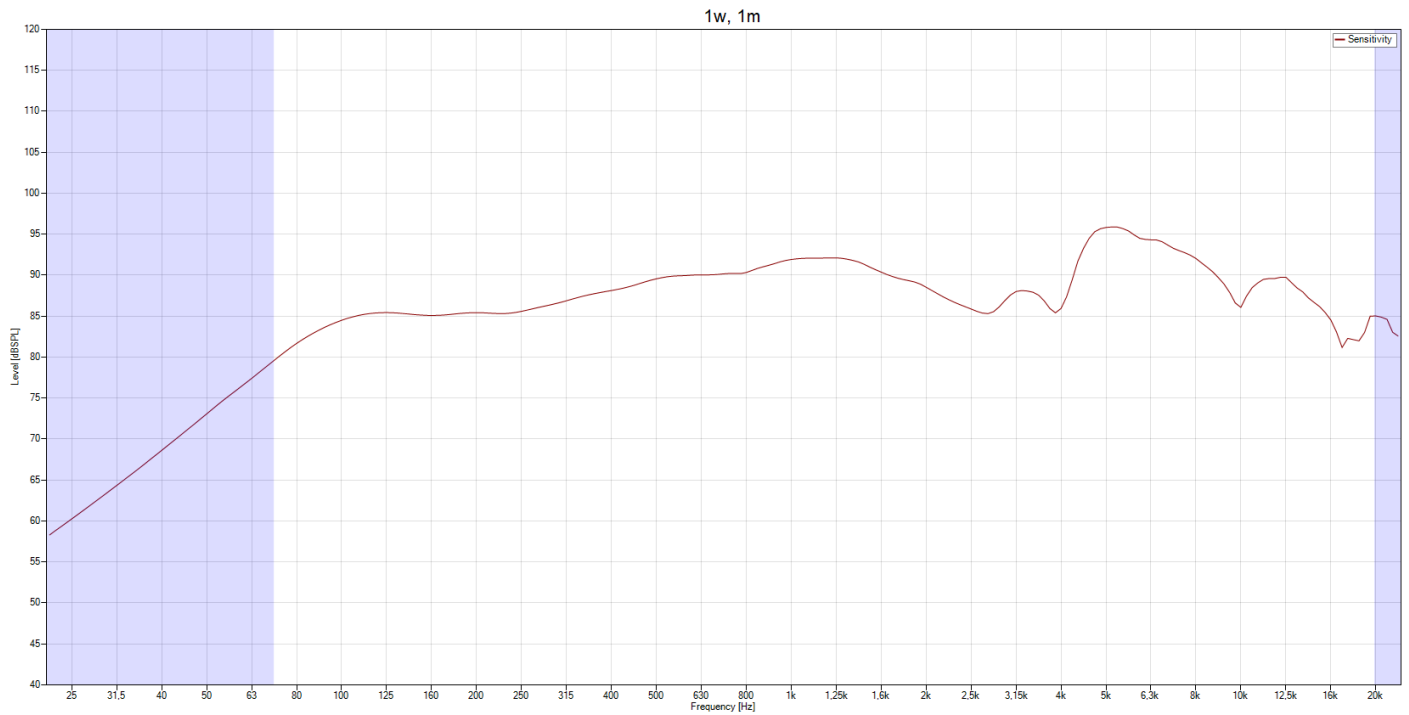
MS-D 30-165 Dante



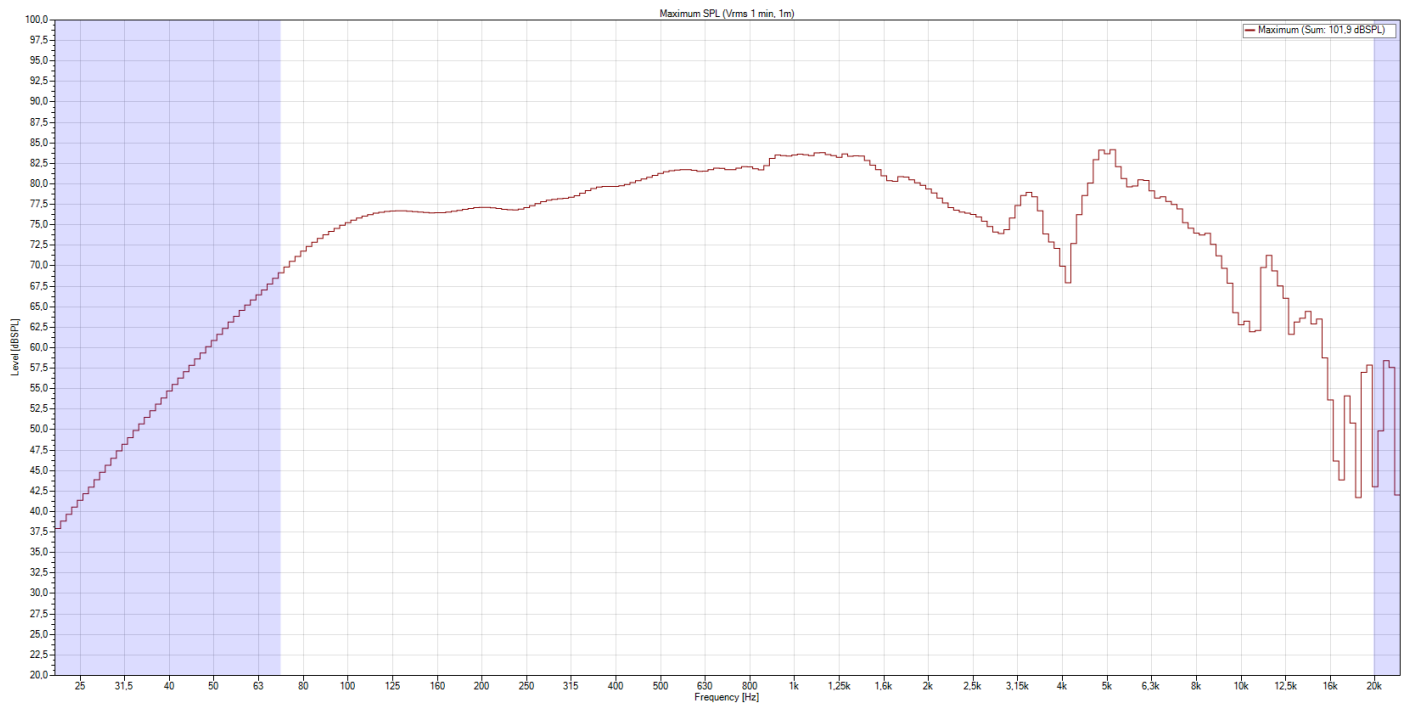
all dimensions are in mm

Frequency Response Diagram

Sensitivity

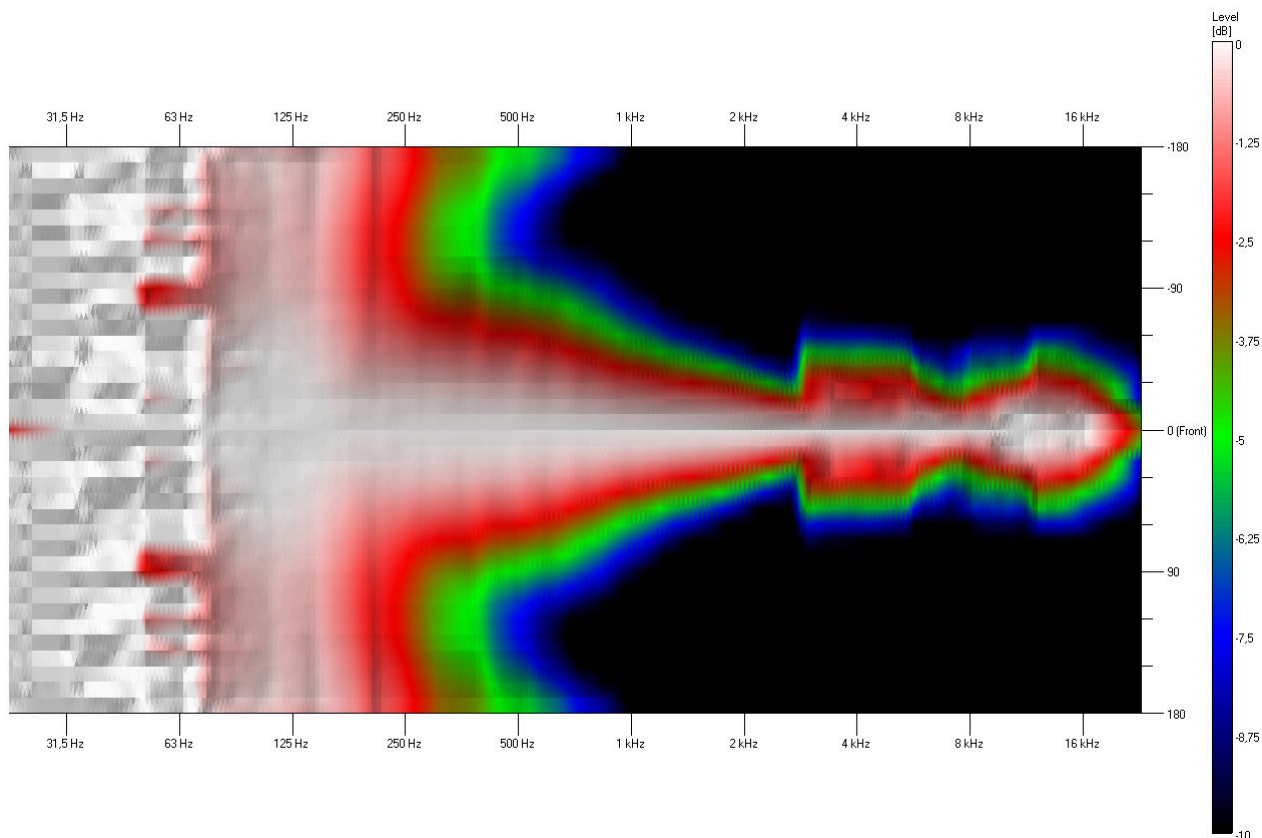


SPL Max

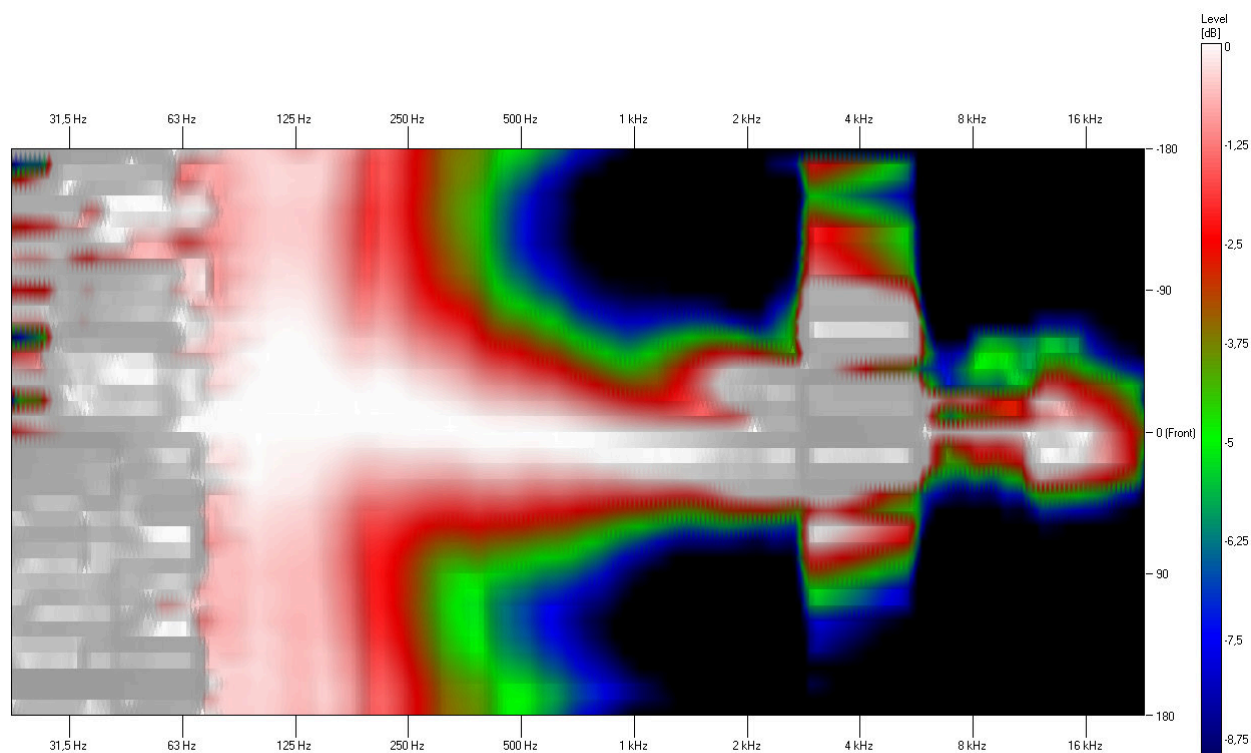


Isobar

Horizontal

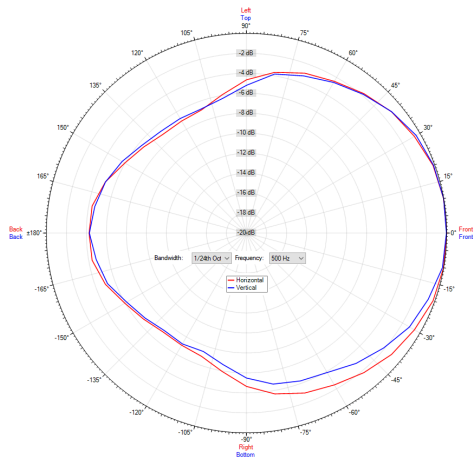


Vertical

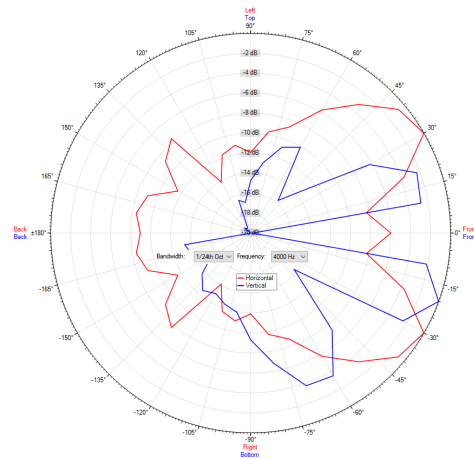


Polar Diagram

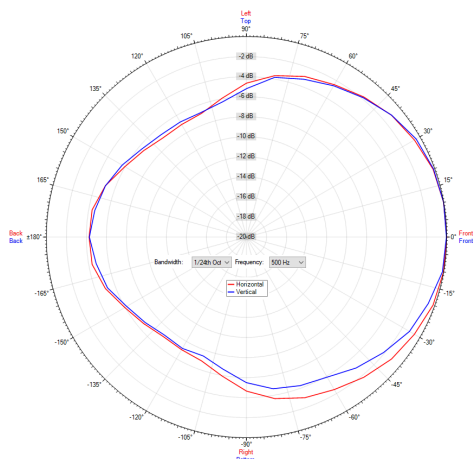
Polar Diagram 500Hz



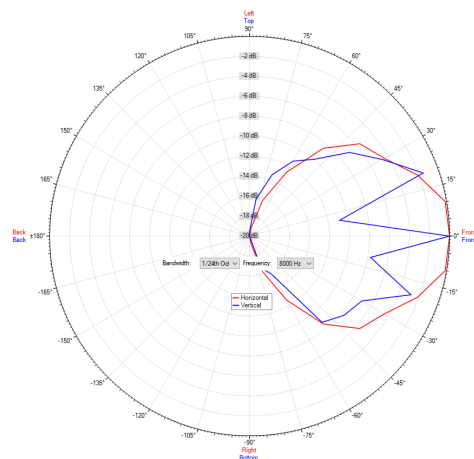
Polar Diagram 4000Hz



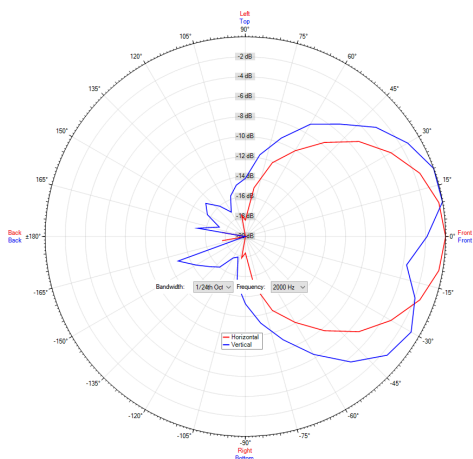
Polar Diagram 1000Hz



Polar Diagram 8000Hz



Polar Diagram 2000Hz



ic audio loudspeakers are tested and classified according to the IEC standard 60529 (degree of protection by enclosure) against the penetration of foreign objects and moisture. The classification is conforming to standards through characterization with a fixed code. This code consists of the letters IP (International Protection) followed by two digits. The first digit indicates the degree of protection against dust and the second digit the degree of protection against water. Please note that the testing of the products has been carried out in laboratory conditions which are not always 100% comparable with the conditions of different installation environments. This protection can be reduced due to normal wear and tear depending on the installation environment.

RoHS compliant (2011/65/EU)



Artikel Nr. : 20248566
Packing Unit: 8

