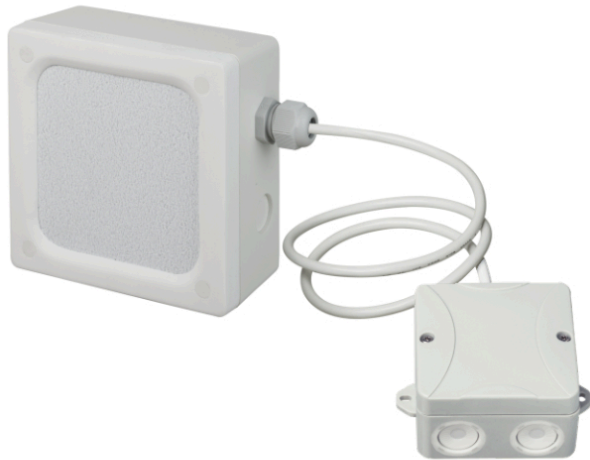


## WA 06-77/T CLR



- UL94 Vo
- dustproof housing
- excellent speech intelligibility



25

ic audio GmbH, Boehringerstraße 14a,  
D-68307 Mannheim, Germany

CE-Symbol gemäß Richtlinie 93/68EWG

The WA 06-77/T CLR is the ideal wall-mounted speaker for cleanrooms and demanding environments. Thanks to the innovative exciter technology, the speaker is fully encapsulated, preventing airborne dust particles and ensuring a dustproof housing (IP67). Despite its compact size, the 6W speaker offers extremely high speech intelligibility.

The housing is made of impact-resistant and UV-resistant ABS plastic (UL94Vo) with a smooth front panel that is also wipeable. The speaker is resistant to high humidity and allows for maintenance-free operation.

Available in RAL 9016, the speaker meets Cleanroom Class 1 according to ISO 14644-1, certified by the Fraunhofer Institute, Germany. It is the perfect solution for environments that demand the highest standards of cleanliness and reliability.

Typical applications include:

- Pharmaceutical and cosmetic production
- Clinics, laboratories, and quarantine areas
- Cleanrooms in the food industry
- Semiconductor industry
- Aerospace
- Marine industry

Product	WA 06-77/T CLR
Artikel Nr.	20248539

### Acoustics

Power	6/3/1,5 W
Speaker ø	77 mm
Frequency Range	715 - 22.000 Hz
Frequency Response	300 - 24.000 Hz
SPL 1W/1m, peak	92,8 dB
SPL 1W/4m, peak	80,8 dB
SPL Pmax/1m, peak	100,5 dB
SPL IEC268-5, Pmax/1m	98,5 dB
Sensitivity IEC268-5, 1W/1m	90,8 dB

## Connections and Housing

Connector	WAGO
Temperature Range	-10 / +55 °C
Dimensions	133x133x72 mm
Weight (net)	0,7 kg
Housing	ABS
Colour	RAL 9016
Mounting	Bayonet mount
IP Rating	IP67

## Certification

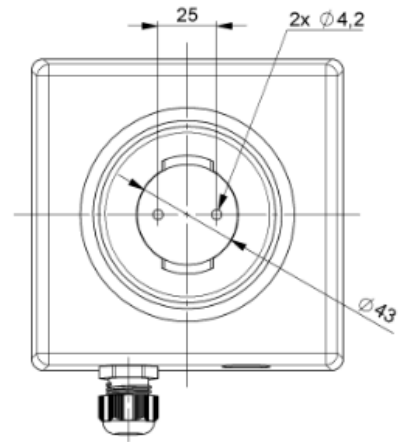
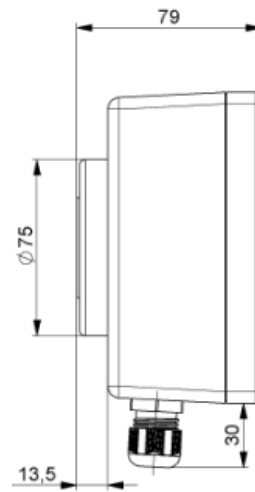
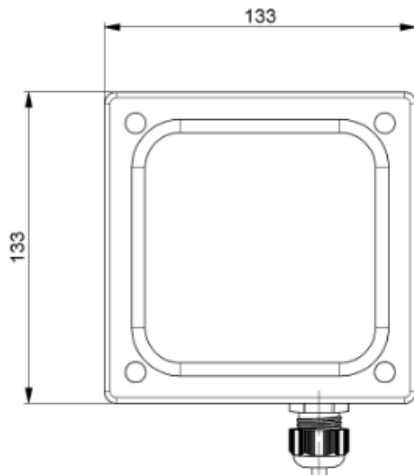
## Product Attributes



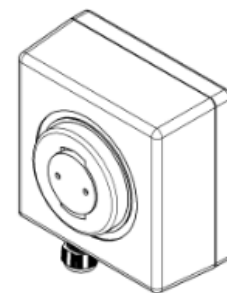
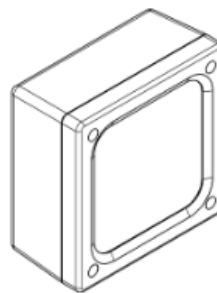
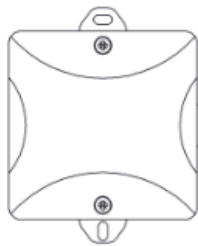
Technical Drawing

**ic audio**

**WA 06-77/T CLR**



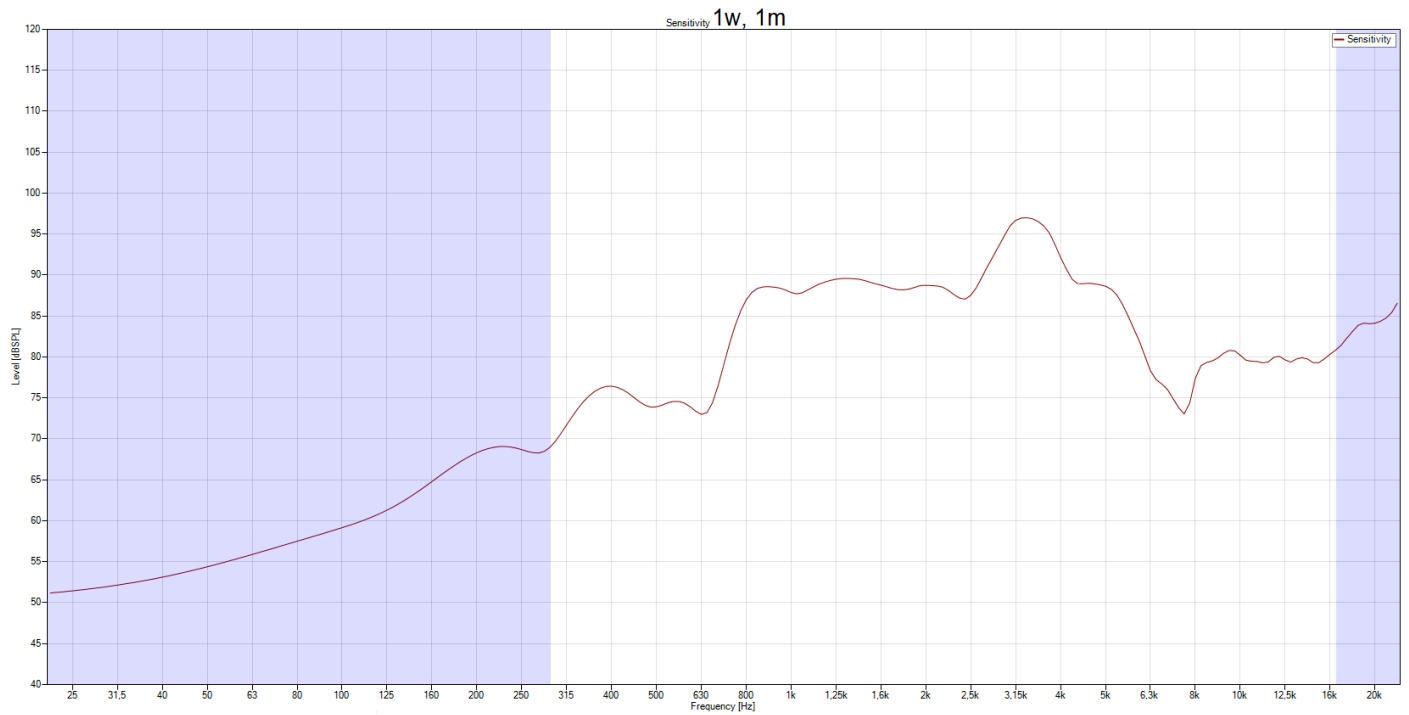
Cable length 1000 mm



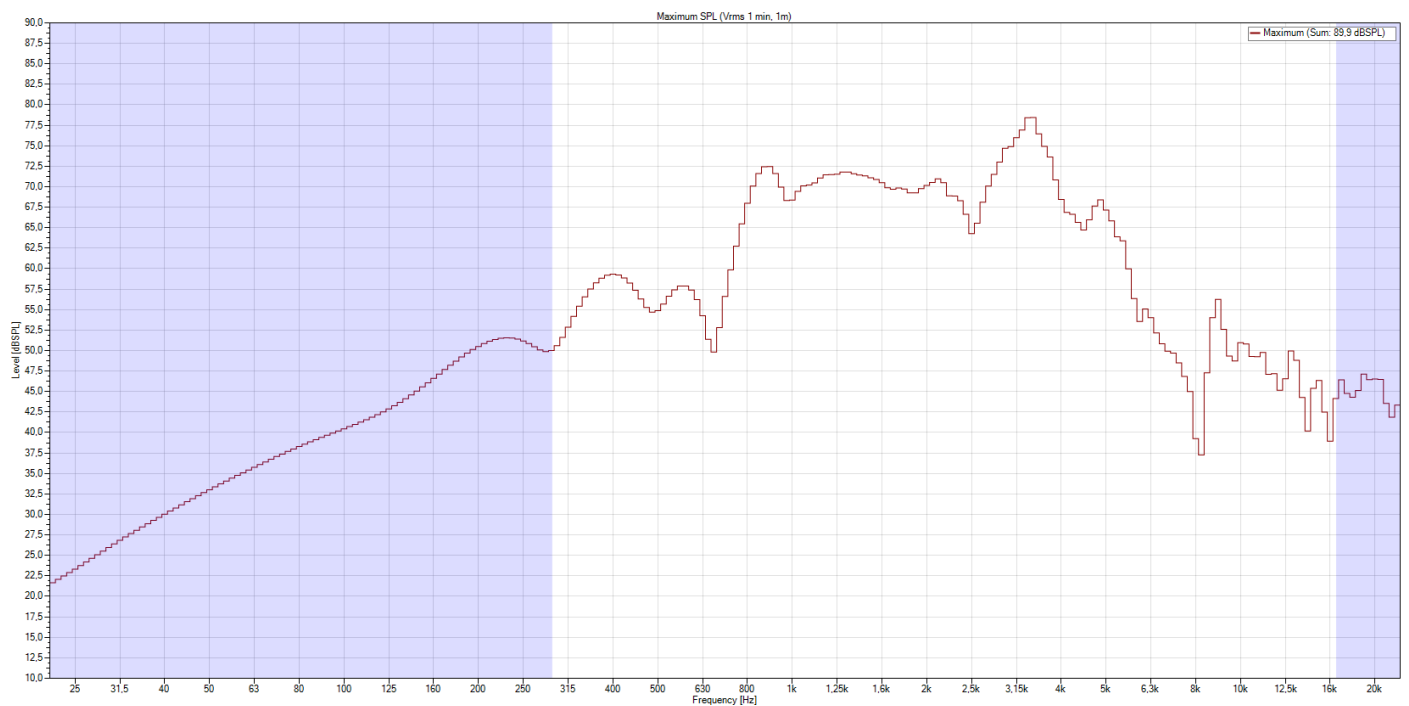
all dimensions are in mm

## Frequency Response Diagram

### Sensitivity

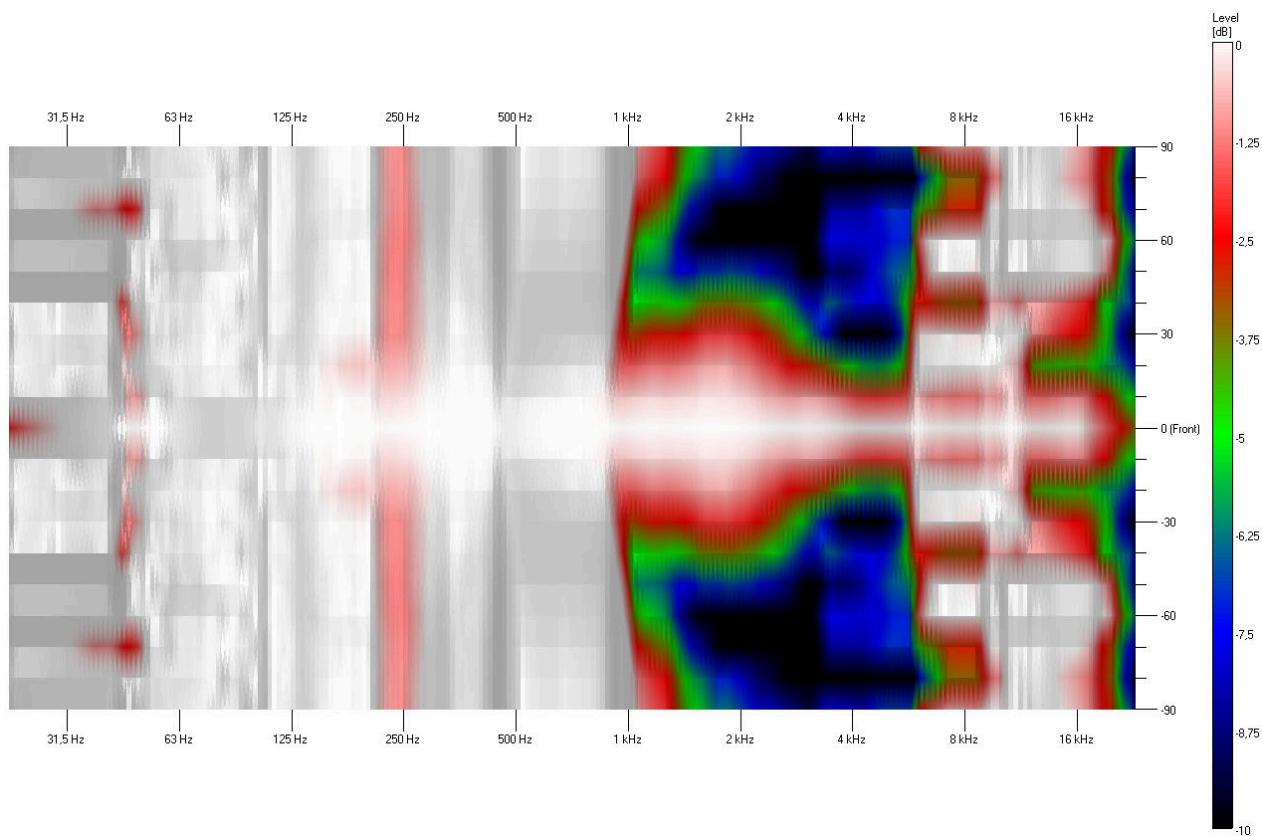


### SPL Max

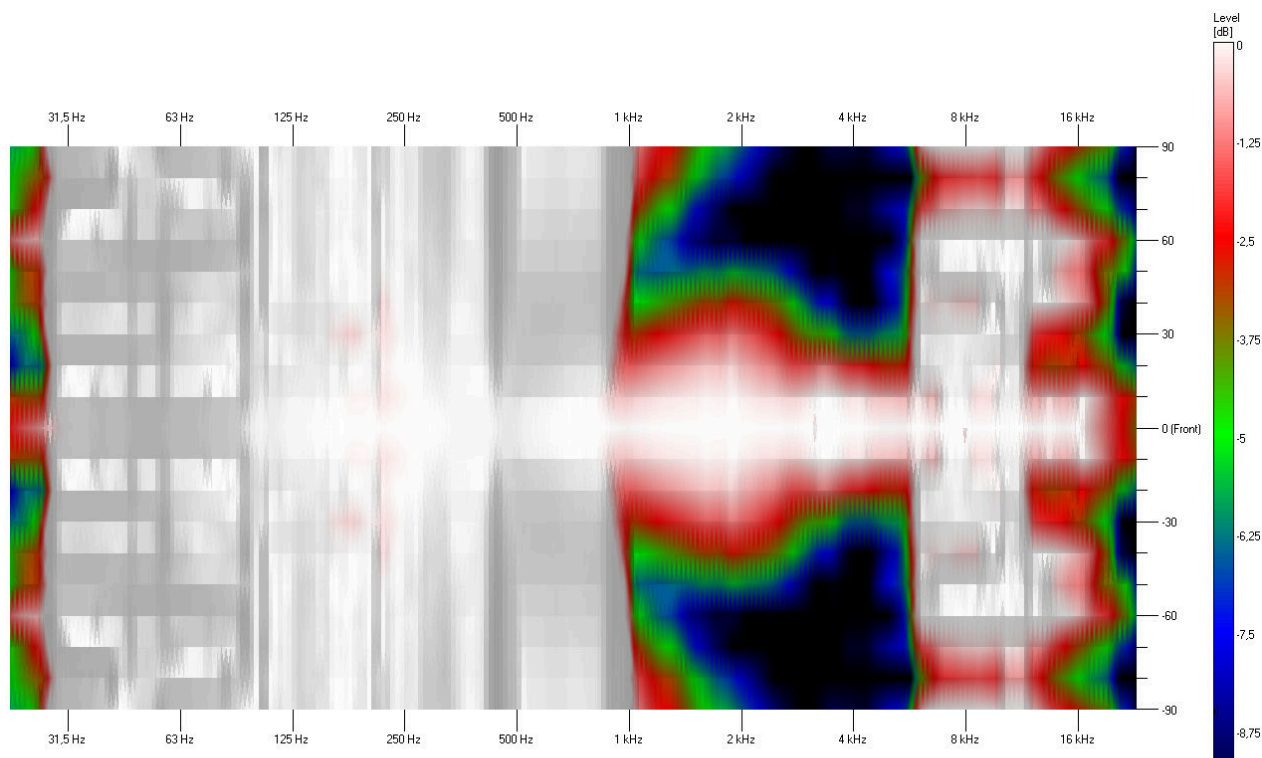


### Isobar

Horizontal

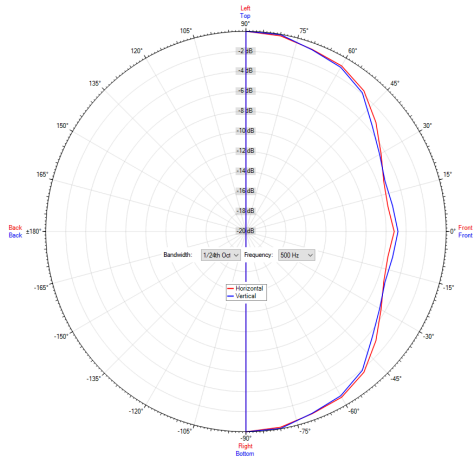


Vertical

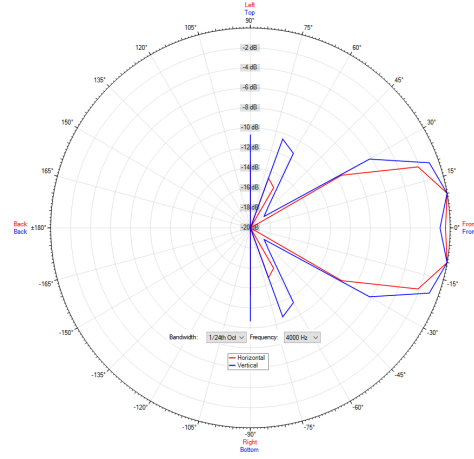


### Polar Diagram

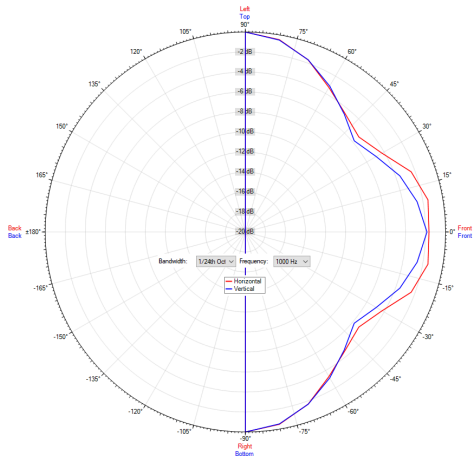
Polar Diagram 500Hz



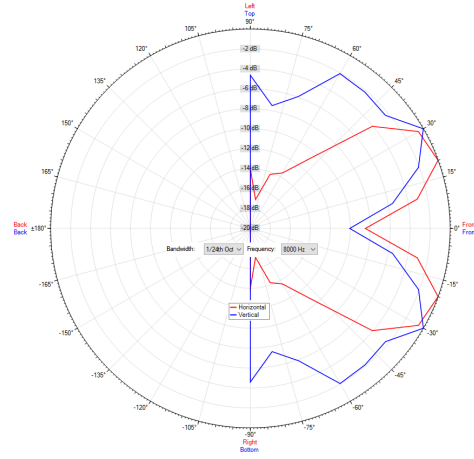
Polar Diagram 4000Hz



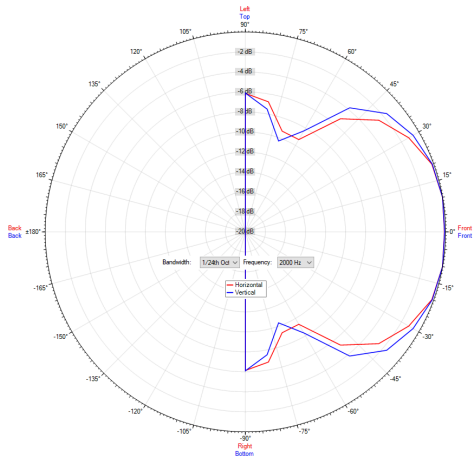
Polar Diagram 1000Hz



Polar Diagram 8000Hz



Polar Diagram 2000Hz



ic audio loudspeakers are tested and classified according to the IEC standard 60529 (degree of protection by enclosure) against the penetration of foreign objects and moisture. The classification is conforming to standards through characterization with a fixed code. This code consists of the letters IP (International Protection) followed by two digits. The first digit indicates the degree of protection against dust and the second digit the degree of protection against water. Please note that the testing of the products has been carried out in laboratory conditions which are not always 100% comparable with the conditions of different installation environments. This protection can be reduced due to normal wear and tear depending on the installation environment.

RoHS compliant (2011/65/EU)



Artikel Nr. : 20248539

Packing Unit: 16

