



DK-MH 30/T plus-EN54

- Superb sound quality
- Weather-proof
- BS 5839



11

EN 54-24:2008

Ref. Nr.: 003-13

ID-Code: SAA-LS03

1438-CPR-1177

ic audio GmbH, Boehringerstraße 14a,
D-68307 Mannheim, Germany

CE-Symbol gemäß Richtlinie 93/68EWG

The 30W powered 2-way speaker is equipped with a 100V line transformer with 4 power adjustments. The impact- and UV-resistant ABS housing in RAL 7035 guarantees long-term stability. For additional reliability, a ceramic block and a thermal fuse are provided.

The speaker is also secured with the high protection class IP 66 against the security risks of environmental influences. The speaker is compliant with the British Standard BS 5839, Part 8.

Mounting by the stainless aluminium universal mount. Optionally available is a mast bracket (MB) for approx. 90-200 mm mast diameter.

Product	DK-MH 30/T plus-EN54
Artikel Nr.	20102232

Acoustics

Power	30/15/7,5/3,75 W
Impedance (100V)	333/667/1333/2670 ohm
Frequency Range	237 - 21.100 Hz
Frequency Response	65 - 24.000 Hz
SPL 1W/1m, peak	101,8 dB
SPL 1W/4m, peak	89,8 dB
SPL Pmax/4m, peak	104,5 dB
SPL IEC268-5, 1W/1m	98,0 dB
SPL IEC268-5, Pmax/1m	112,8 dB
Sensitivity EN54-24, 1W/1m	98,1 dB
Sensitivity EN54-24, 1W/4m	86,0 dB
Dispersion -6dB, 500Hz	190° (h) 205° (v)
Dispersion -6dB, 1KHz	70° (h) 90° (v)
Dispersion -6dB, 2KHz	85° (h) 90° (v)
Dispersion -6dB, 4KHz	80° (h) 110° (v)

Connections and Housing

Connector	ceramic block
Terminal Diameter	3,2 mm
Maximum Cable Passage	8 mm ²
Temperature Range	-25 / +70 C°
Type A/B	B
Dimensions	370x255x291 mm
Weight (net)	4,9kg
Housing	ABS
Colour	RAL 7035
Mounting	Mounting bracket
IP Rating	IP66

Certification

Ref. Nr.	003-13
ID-Code	SAA-LS03
Certificate Number	1438-CPR-1177

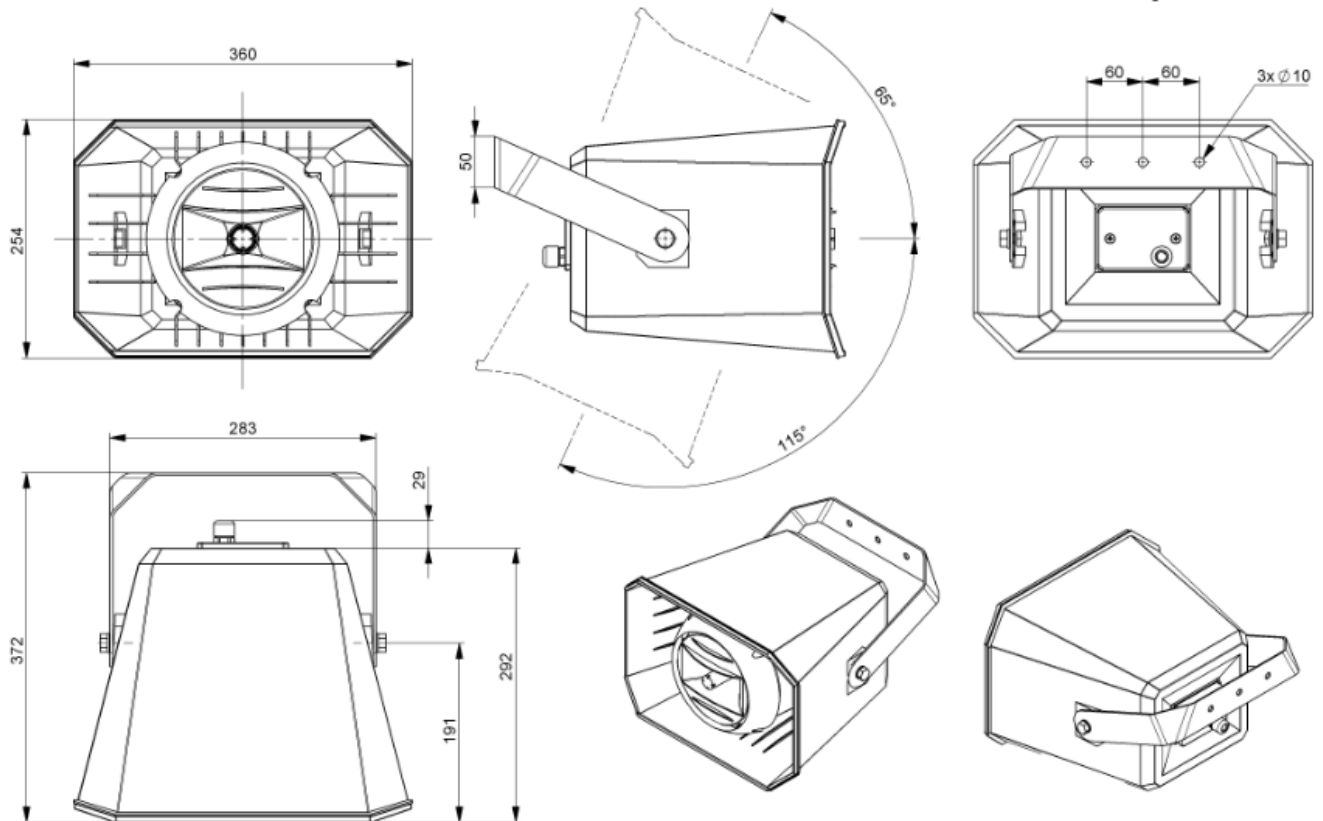
Product Attributes



Technical Drawing



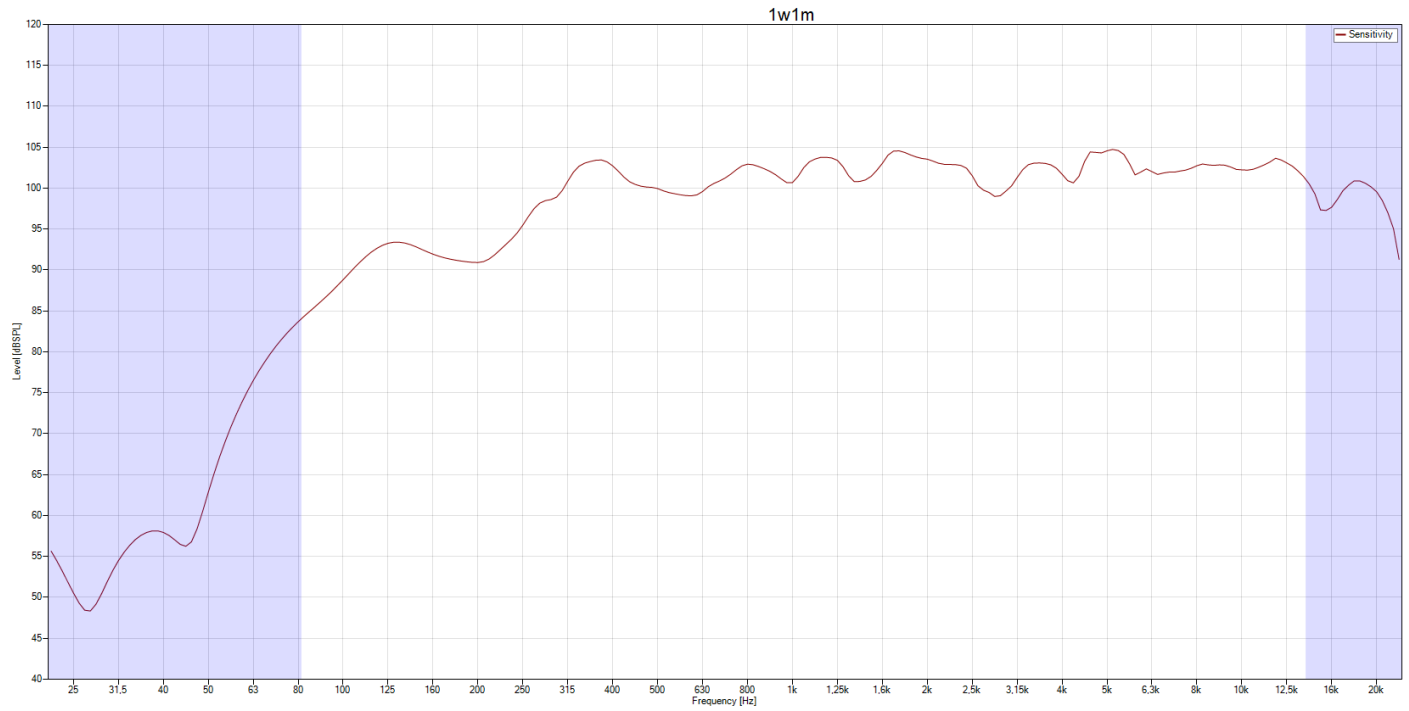
DK-MH 30/T plus-EN54



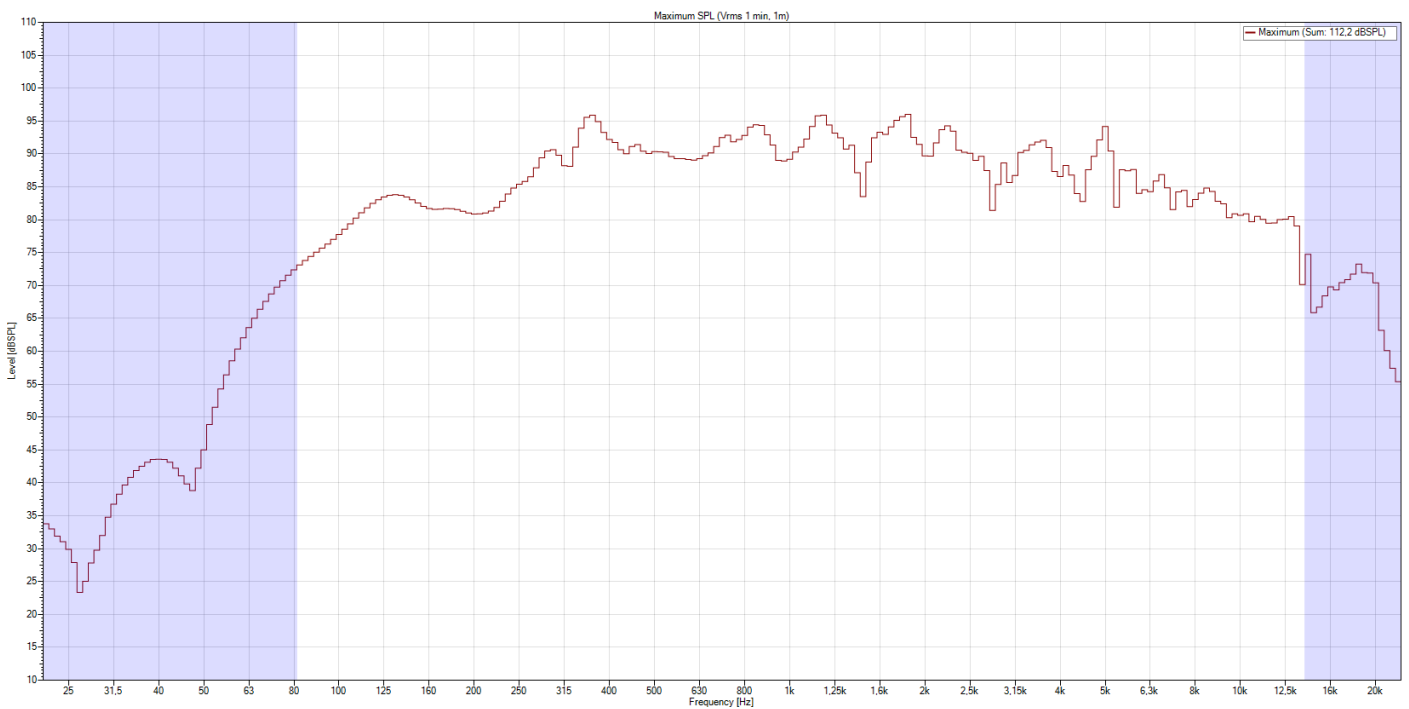
all dimensions are in mm

Frequency Response Diagram

Sensitivity

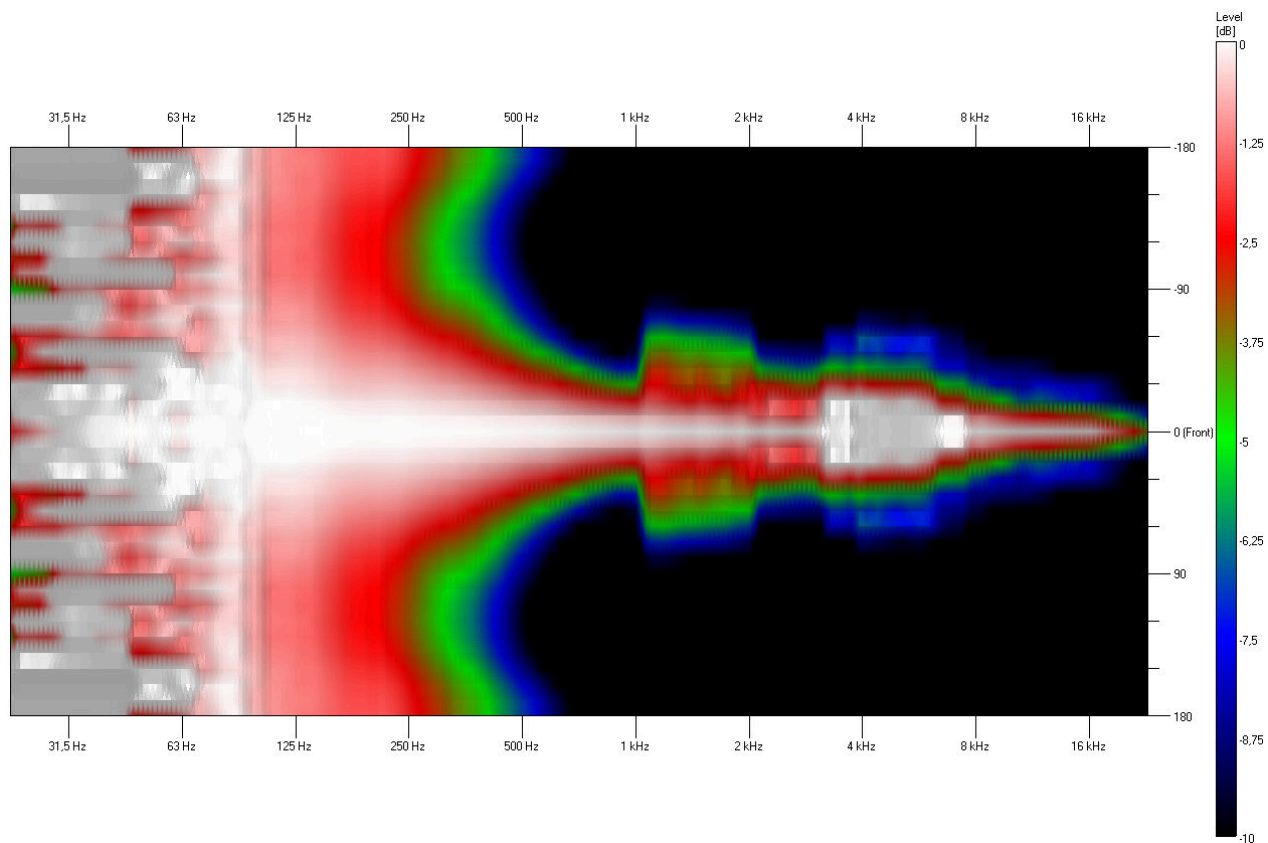


SPL Max

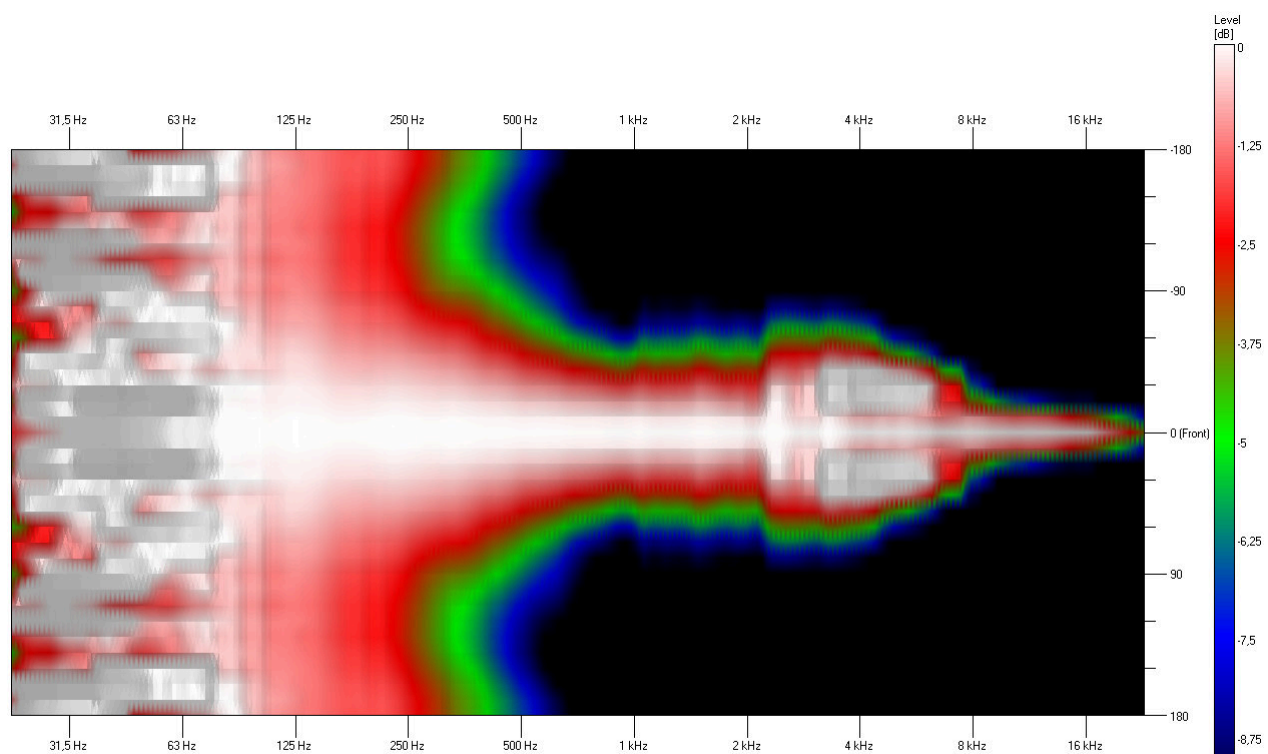


Isobar

Horizontal

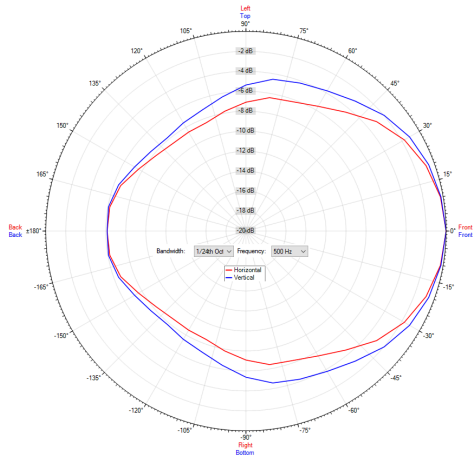


Vertical

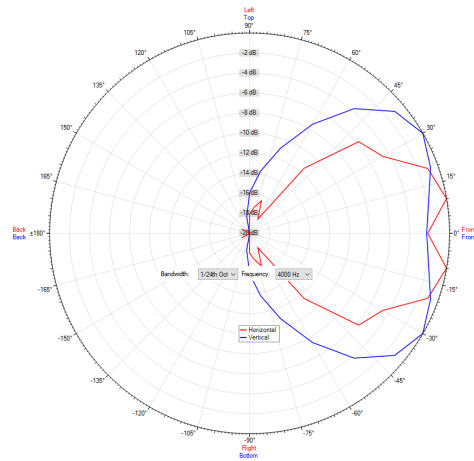


Polar Diagram

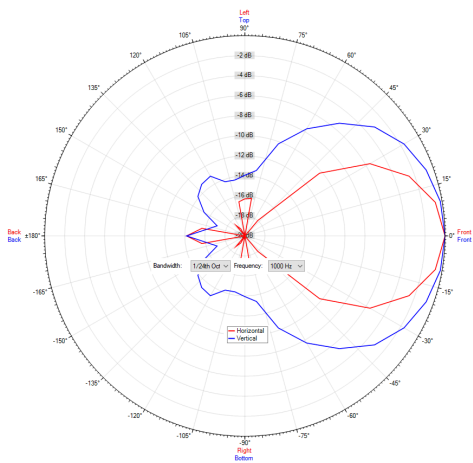
Polar Diagram 500Hz



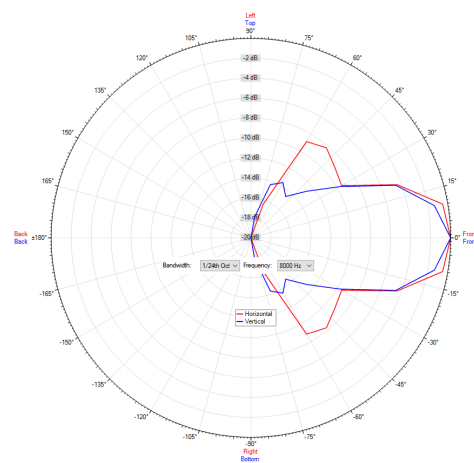
Polar Diagram 4000Hz



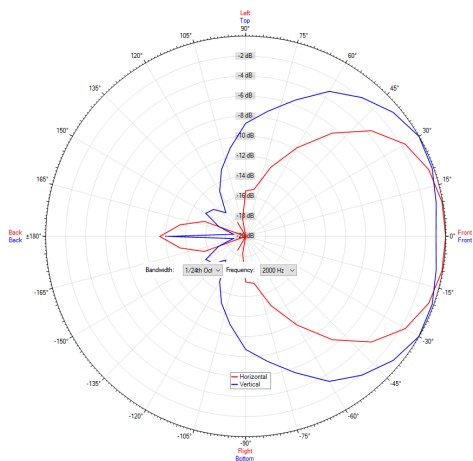
Polar Diagram 1000Hz



Polar Diagram 8000Hz



Polar Diagram 2000Hz



ic audio loudspeakers are tested and classified according to the IEC standard 60529 (degree of protection by enclosure) against the penetration of foreign objects and moisture. The classification is conforming to standards through characterization with a fixed code. This code consists of the letters IP (International Protection) followed by two digits. The first digit indicates the degree of protection against dust and the second digit the degree of protection against water. Please note that the testing of the products has been carried out in laboratory conditions which are not always 100% comparable with the conditions of different installation environments. This protection can be reduced due to normal wear and tear depending on the installation environment.

RoHS compliant (2011/65/EU)

The IP rating specified is based on ic audio test results, not on CNBOP-PIB test results. Certification only verifies the minimum requirements for EN54-24 compliance.



Artikel Nr. : 20102232

Packing Unit: 4

