



WU 06-165/T-EN54

- Softline-design
- Dustproof
- BS 5839



EN 54-24:2008
Ref. Nr.: 018-15
ID-Code: SAA-LS09
1438-CPR-0270

ic audio GmbH, Boehringerstraße 14a,
D-68307 Mannheim, Germany

CE-Symbol gemäß Richtlinie 93/68EWG

The 6W powered speaker is equipped with a 165mm full-range loudspeaker chassis and a 100V transformer with 3 power adjustments. The high-density, shock-resistant ABS-plastic front panel in white provides a low resonance sound. A sturdy front grille made of steel guarantees enduring stability. For additional reliability, a 2-pin ceramic block, and a thermal fuse are provided and the speaker chassis is impregnated against wetness.

The speaker is also secured with the protection class IP 21C against the security risks of environmental influences. It is also compliant with the British Standard BS 5839, Part 8.

Quick and easy mounting with screws.

Product	WU 06-165/T-EN54
Artikel Nr.	20102245

Acoustics

Power	6/3/1,5 W
Impedance (100V)	1667/3333/6667 ohm
Speaker \varnothing	165 mm
Frequency Range	93 - 23.500 Hz
Frequency Response	72 - 23.500 Hz
SPL 1W/1m, peak	99,1 dB
SPL 1W/4m, peak	87,1 dB
SPL Pmax/4m, peak	94,8 dB
SPL IEC268-5, 1W/1m	92,0 dB
SPL IEC268-5, Pmax/1m	99,8 dB
Sensitivity EN54-24, 1W/1m	92,0 dB
Sensitivity EN54-24, 1W/4m	80,0 dB
Dispersion -6dB, 500Hz	h=180° v=180°
Dispersion -6dB, 1KHz	h=180° v=170°
Dispersion -6dB, 2KHz	h=120° v=130°
Dispersion -6dB, 4KHz	h=50° v=60°

Connections and Housing

Connector	2-pin ceramic block
Terminal Diameter	3,2 mm
Maximum Cable Passage	8 mm ²
Temperature Range	-10 / +55 C°
Type A/B	A
Dimensions	255x195x88 mm
Weight (net)	1,40 kg
Housing	ABS
Colour	RAL 9010
Mounting	Flush mounting
IP Rating	IP21

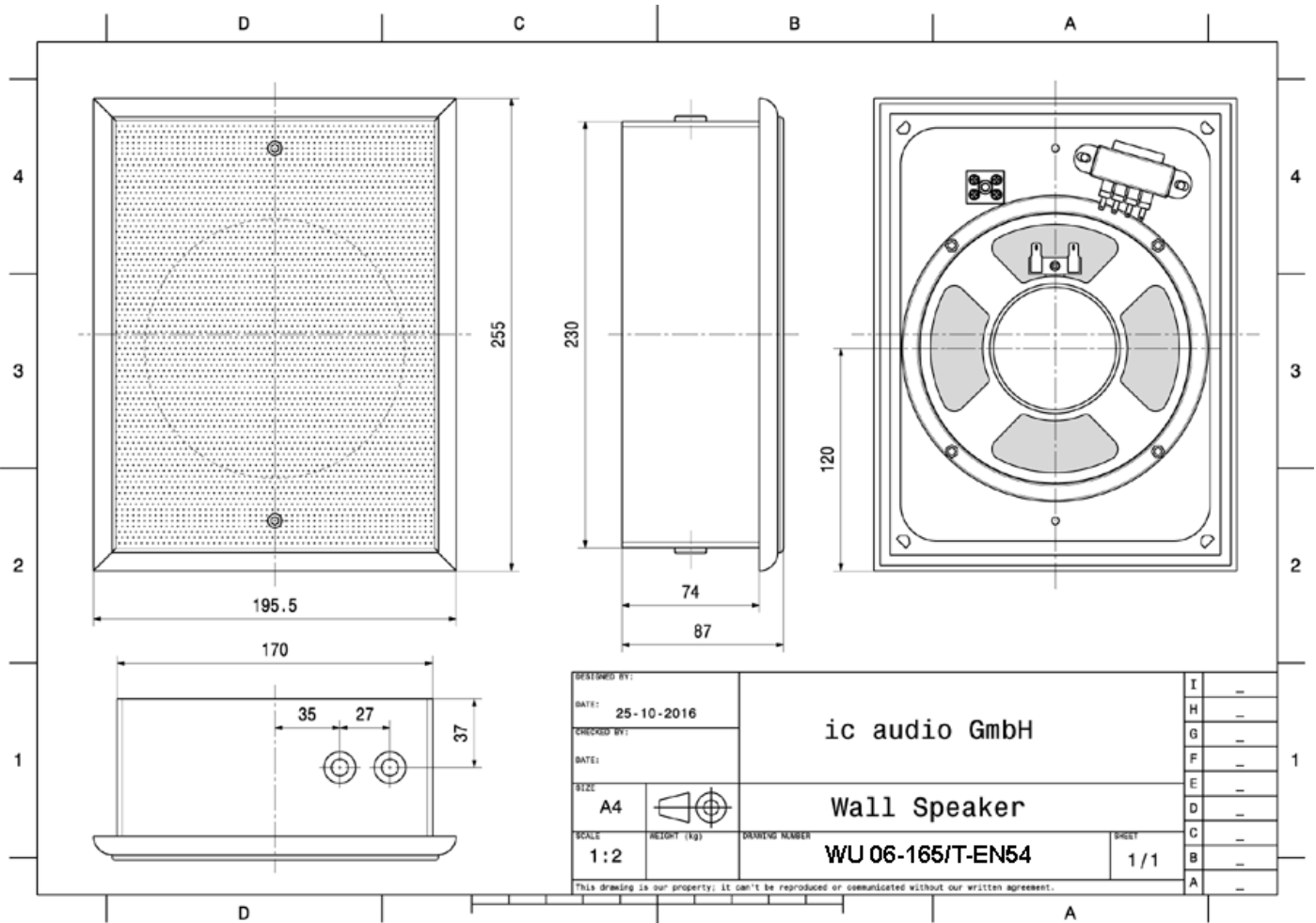
Certification

Ref. Nr.	018-15
ID-Code	SAA-LS09
Certificate Number	1438-CPR-0270

Product Attributes

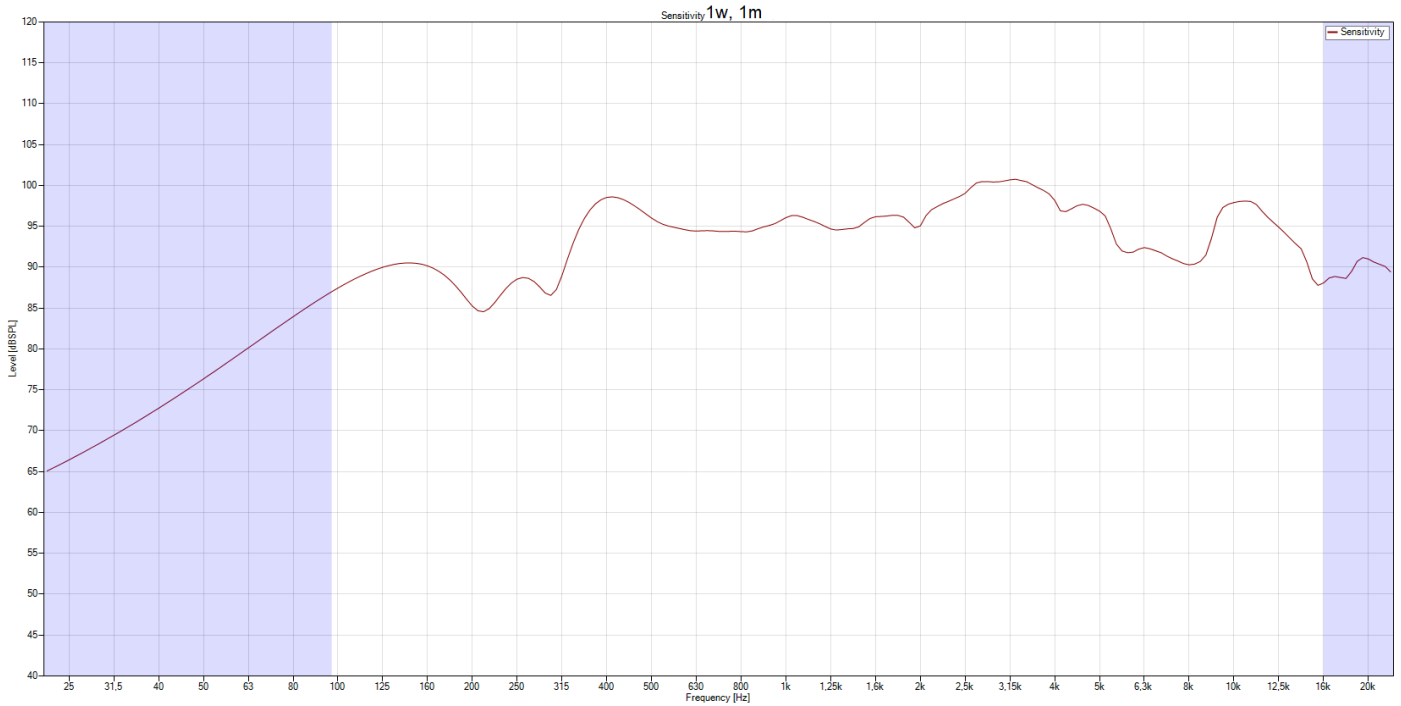


Technical Drawing

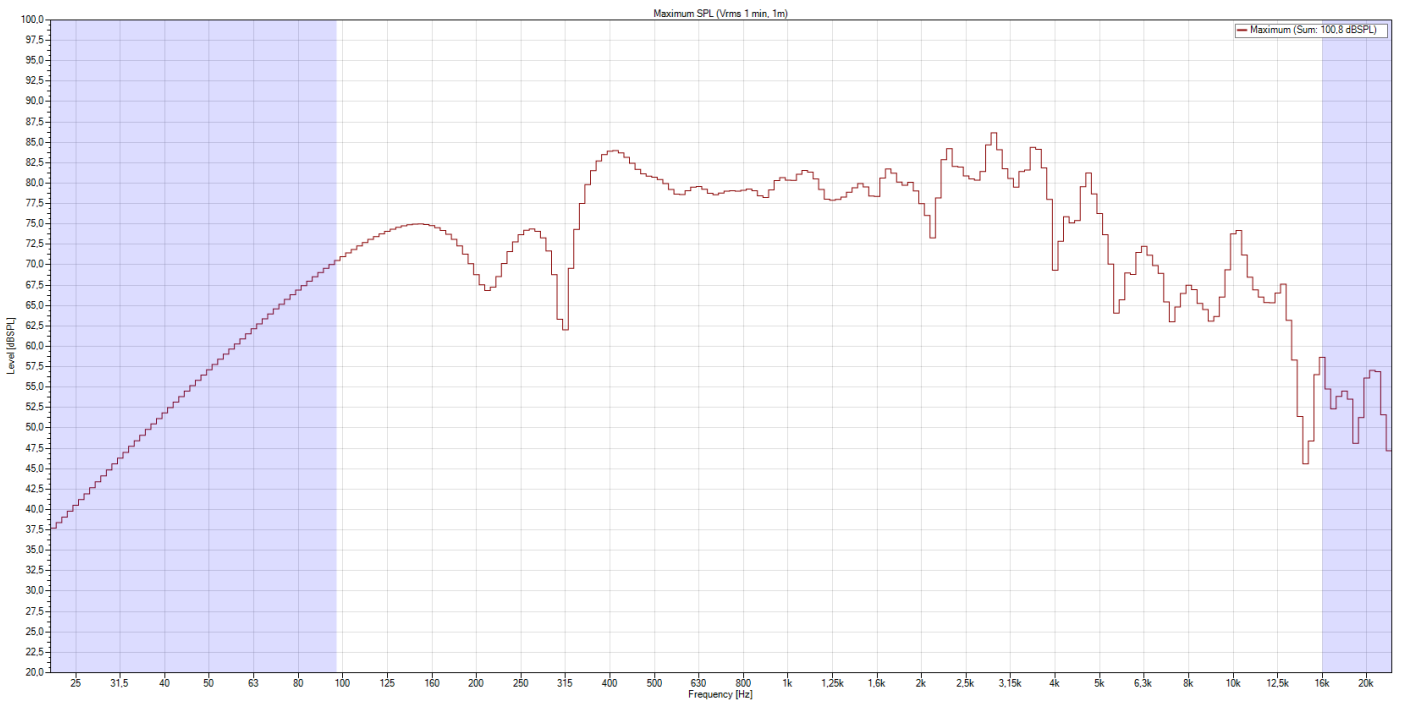


Frequency Response Diagram

Sensitivity

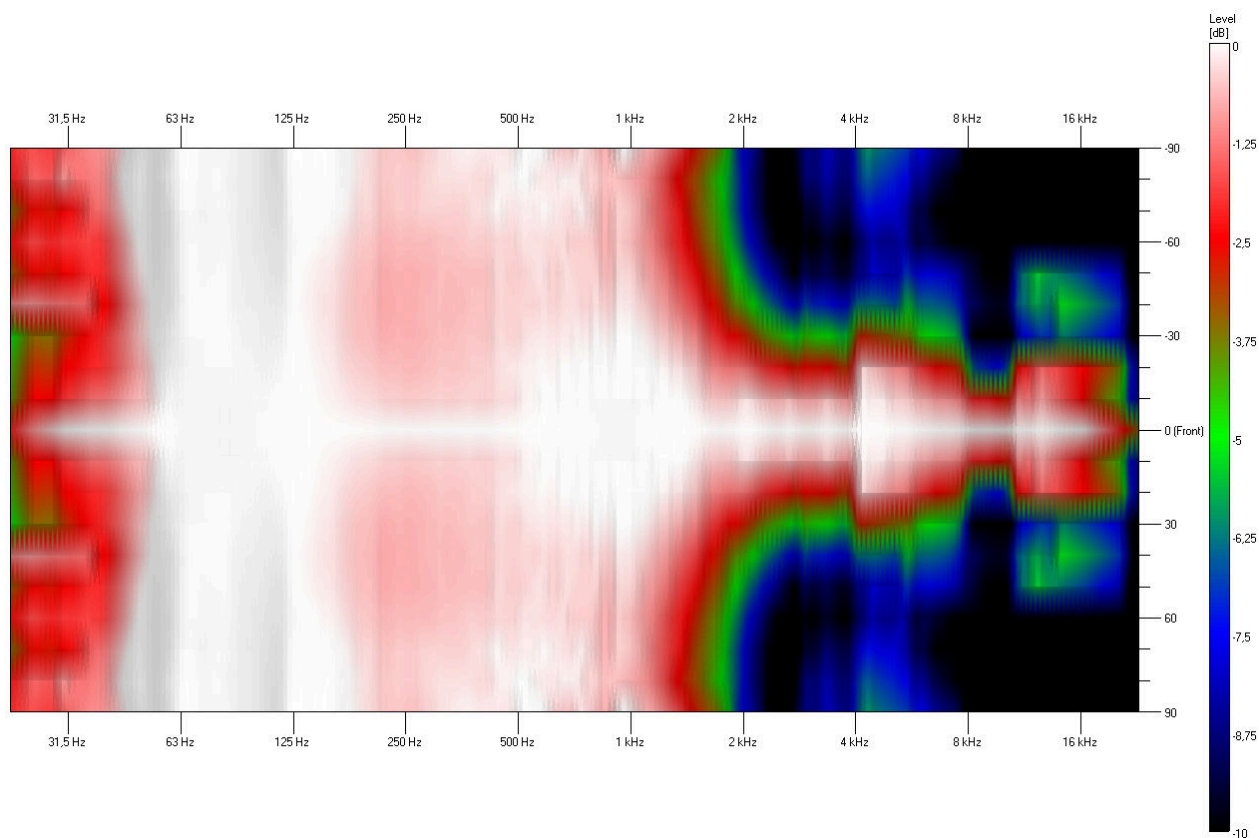


SPL Max

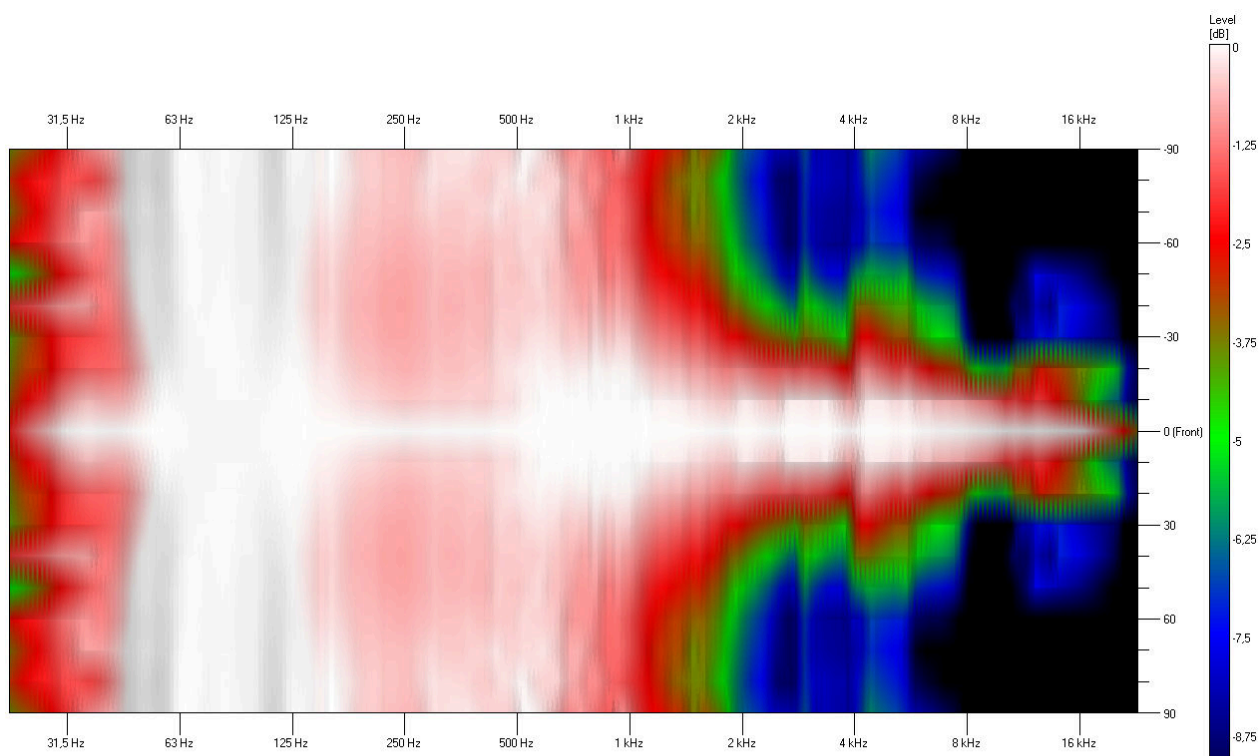


Isobar

Horizontal

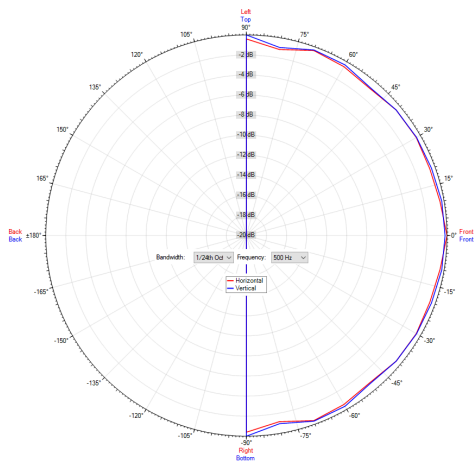


Vertical

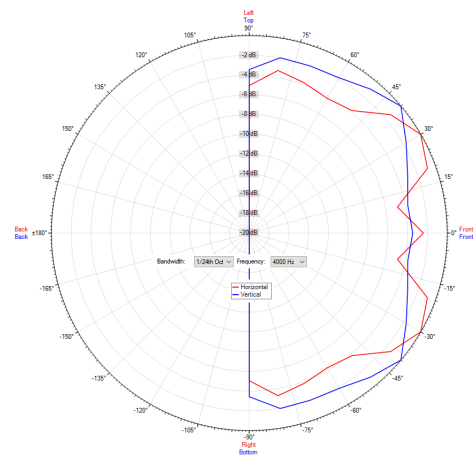


Polar Diagram

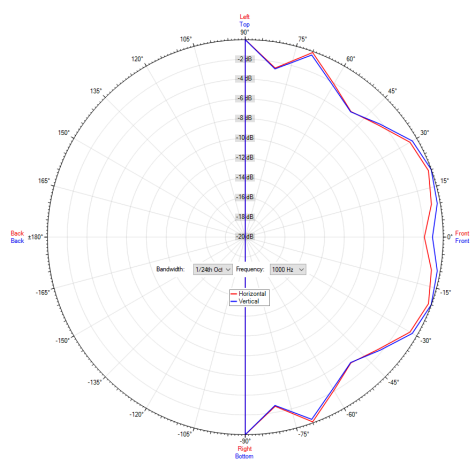
Polar Diagram 500Hz



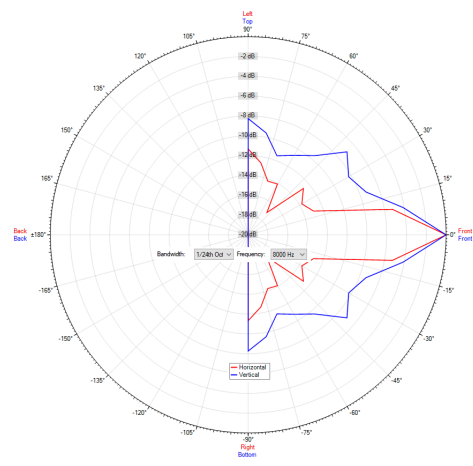
Polar Diagram 4000Hz



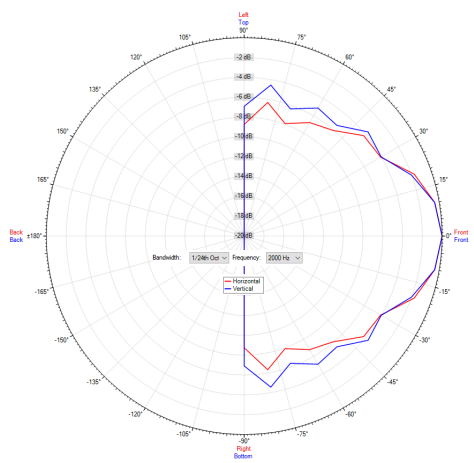
Polar Diagram 1000Hz



Polar Diagram 8000Hz



Polar Diagram 2000Hz



ic audio loudspeakers are tested and classified according to the IEC standard 60529 (degree of protection by enclosure) against the penetration of foreign objects and moisture. The classification is conforming to standards through characterization with a fixed code. This code consists of the letters IP (International Protection) followed by two digits. The first digit indicates the degree of protection against dust and the second digit the degree of protection against water. Please note that the testing of the products has been carried out in laboratory conditions which are not always 100% comparable with the conditions of different installation environments. This protection can be reduced due to normal wear and tear depending on the installation environment.

RoHS compliant (2011/65/EU)

The IP rating specified is based on ic audio test results, not on CNBOP-PIB test results. Certification only verifies the minimum requirements for EN54-24 compliance.



Artikel Nr. : 20102245
Packing Unit: 8

