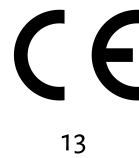




TS-C10-300/T-EN54

- Aluminium housing
- Weather-proof
- BS 5839



EN 54-24:2008
 Ref. Nr.: 006-13
 ID-Code: SAA-LS06
 1438/CPD/0315

ic audio GmbH, Boehringerstraße 14a,
 D-68307 Mannheim, Germany

CE-Symbol gemäß Richtlinie 93/68EWG

The 10W powered speaker is equipped with two 77mm full-range loudspeaker chassis and a 100V transformer with 4 power adjustments. The powder-coated and shock-resistant aluminium housing in RAL 9006 guarantees long-term stability. For additional reliability, a 2-pin ceramic block and a thermal fuse are provided, and the speaker chassis is impregnated against wetness. Furthermore, sturdy cable glands 2 x PG9 are also provided.

The speaker is also secured with the high protection class IP 66 against the security risks of environmental influences.

The speaker is compliant with the British Standard BS 5839, Part 8.

The easy mounting with the included swivel bracket provides much flexibility for the installation.

The ball impact resistance of the sound column can only be guaranteed if a mounting bracket is used (article number 20070899). This can be ordered separately.

Product	TS-C10-300/T-EN54
Artikel Nr.	20122601

Acoustics

Power	10/6/3/1,5 W
Impedance (100V)	1000/1667/3333/6667 ohm
Speaker \varnothing	77 mm
Frequency Range	210 - 17.700 Hz
Frequency Response	140 - 23.500 Hz
SPL 1W/1m, peak	97,6 dB
SPL 1W/4m, peak	85,6 dB
SPL Pmax/4m, peak	95,6 dB
SPL IEC268-5, 1W/1m	89,0 dB
SPL IEC268-5, Pmax/1m	99,0 dB
Sensitivity EN54-24, 1W/1m	89,2 dB
Sensitivity EN54-24, 1W/4m	77,2 dB
Dispersion -6dB, 500Hz	h/v = 360°
Dispersion -6dB, 1KHz	h = 187°, v = 108°
Dispersion -6dB, 2KHz	h = 149°, v = 66°
Dispersion -6dB, 4KHz	h = 91°, v = 32°

Connections and Housing

Connector	2-pin ceramic block
Terminal Diameter	4,0 mm
Maximum Cable Passage	12,5 mm ²
Temperature Range	-25 / +70 C°
Type A/B	B
Dimensions	285x100x92 mm
Weight (net)	1,70 kg
Housing	aluminium
Horizontal Adjustment	-75°...+75° (5° steps)
Vertical Adjustment	-45°...+80° (5° steps)
Colour	RAL 9006
Mounting	Swivel bracket
IP Rating	IP66

Certification

Ref. Nr.	006-13
ID-Code	SAA-LS06
Certificate Number	1438/CPD/0315

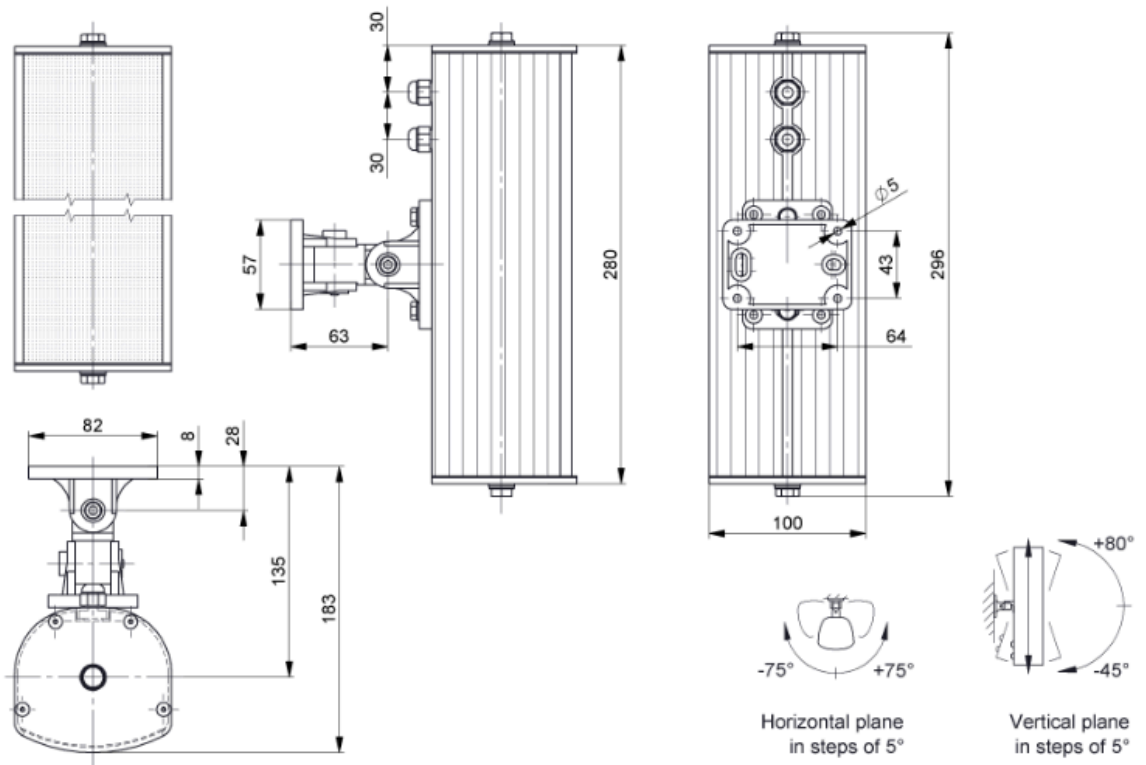
Product Attributes



Technical Drawing



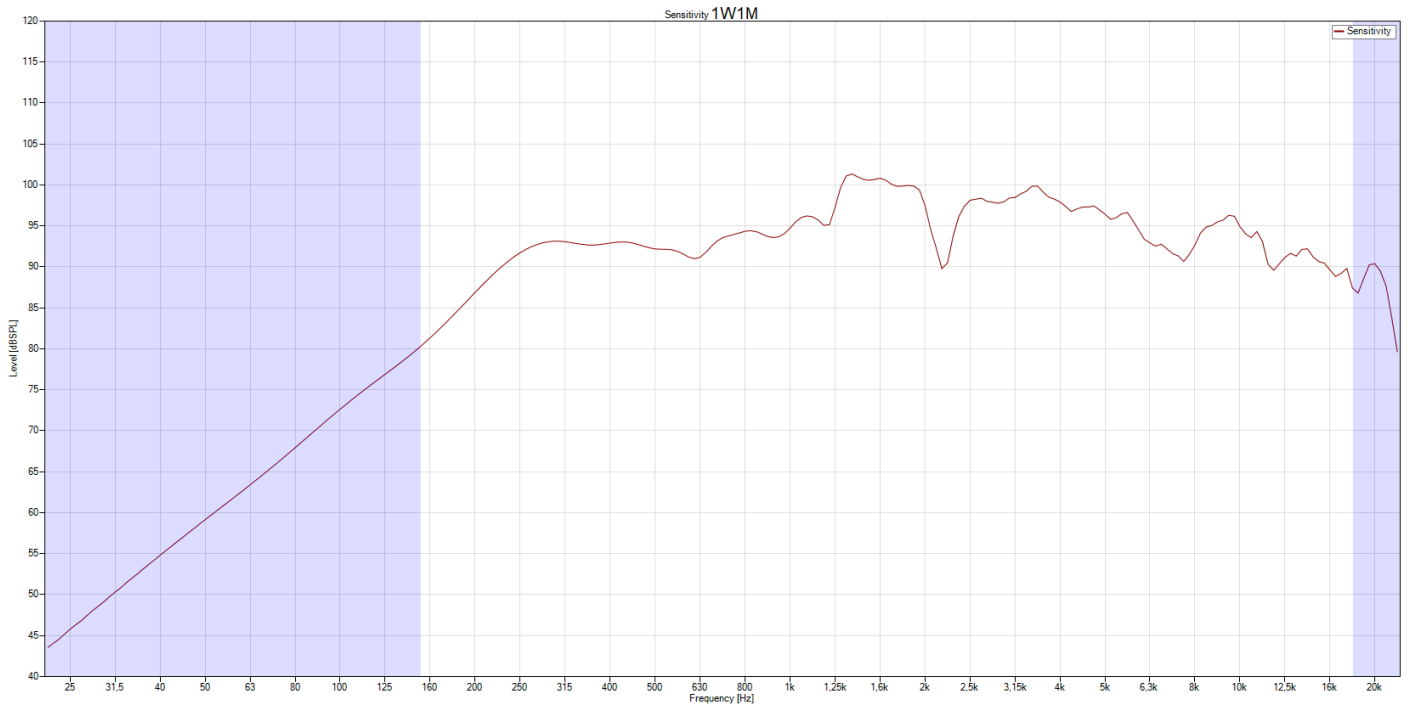
TS-C 10-300/T-EN54



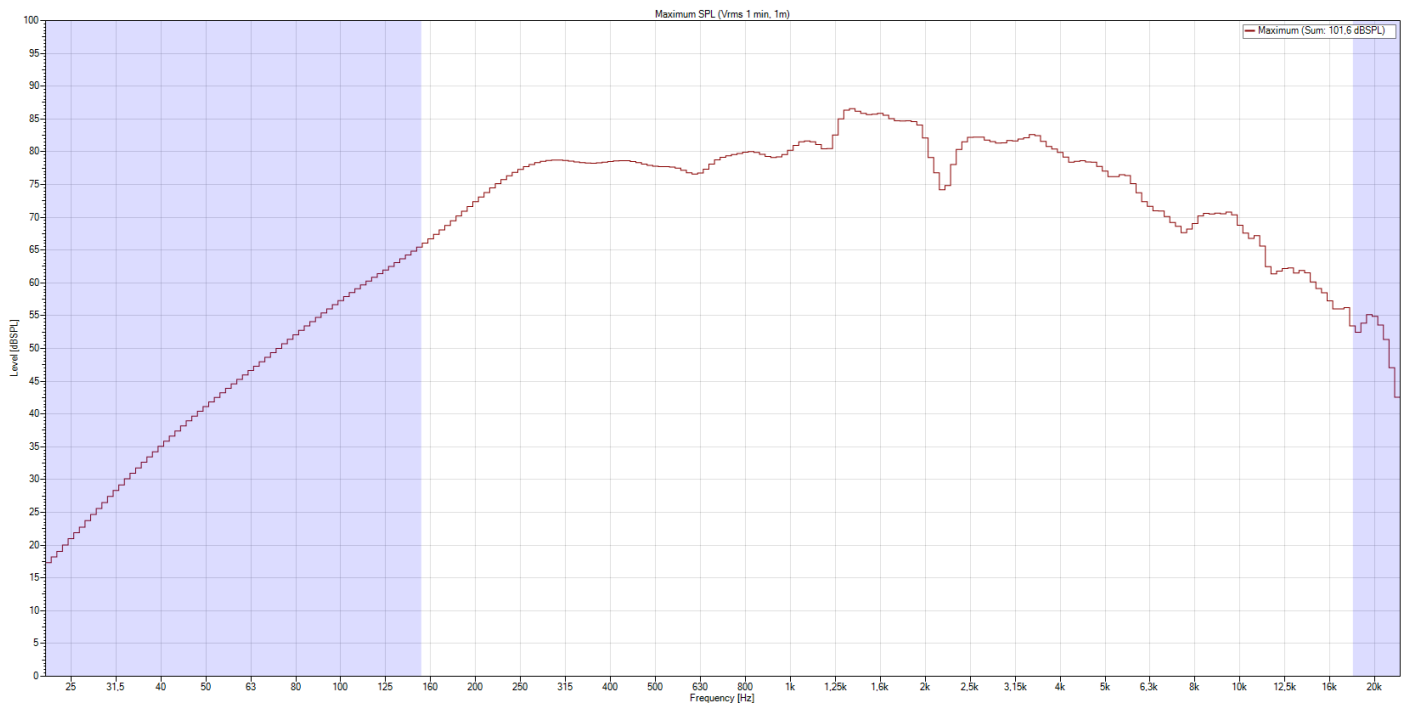
all dimensions are in mm

Frequency Response Diagram

Sensitivity

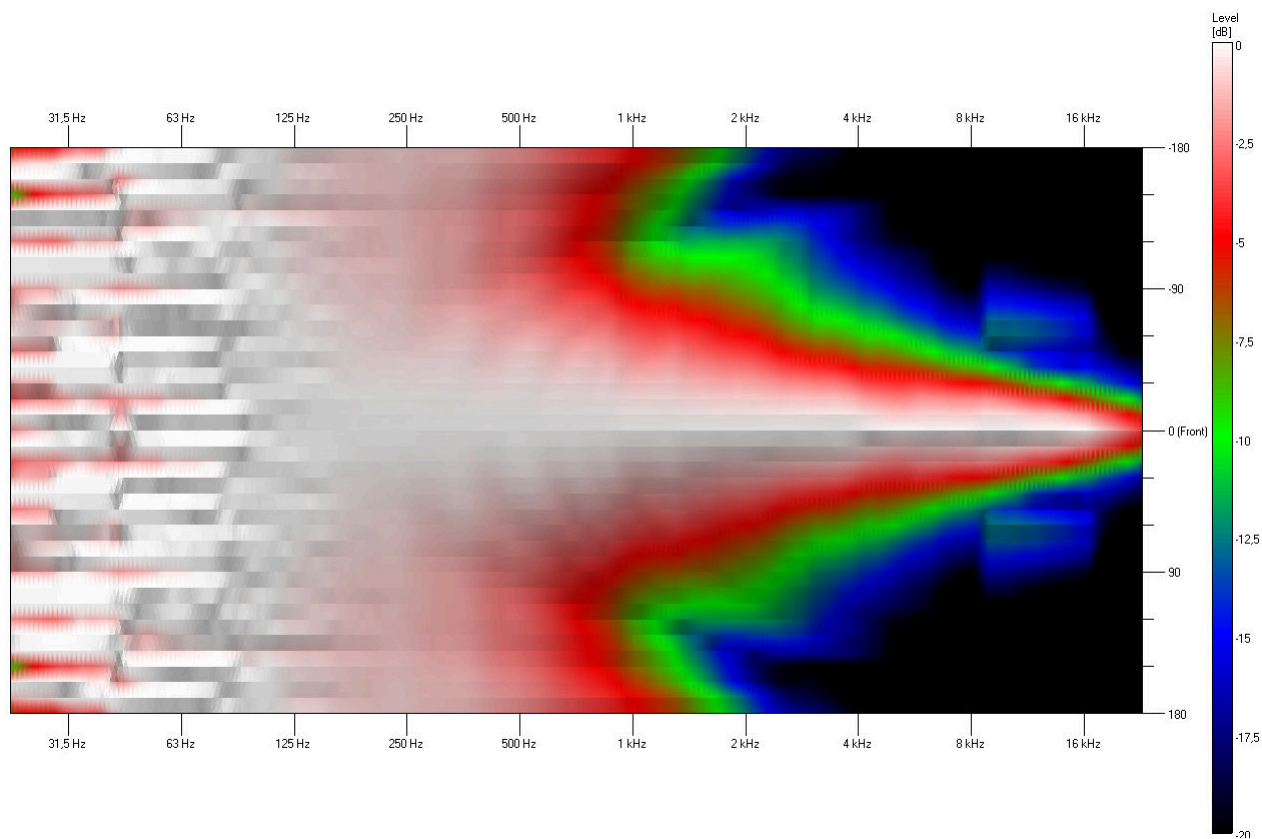


SPL Max

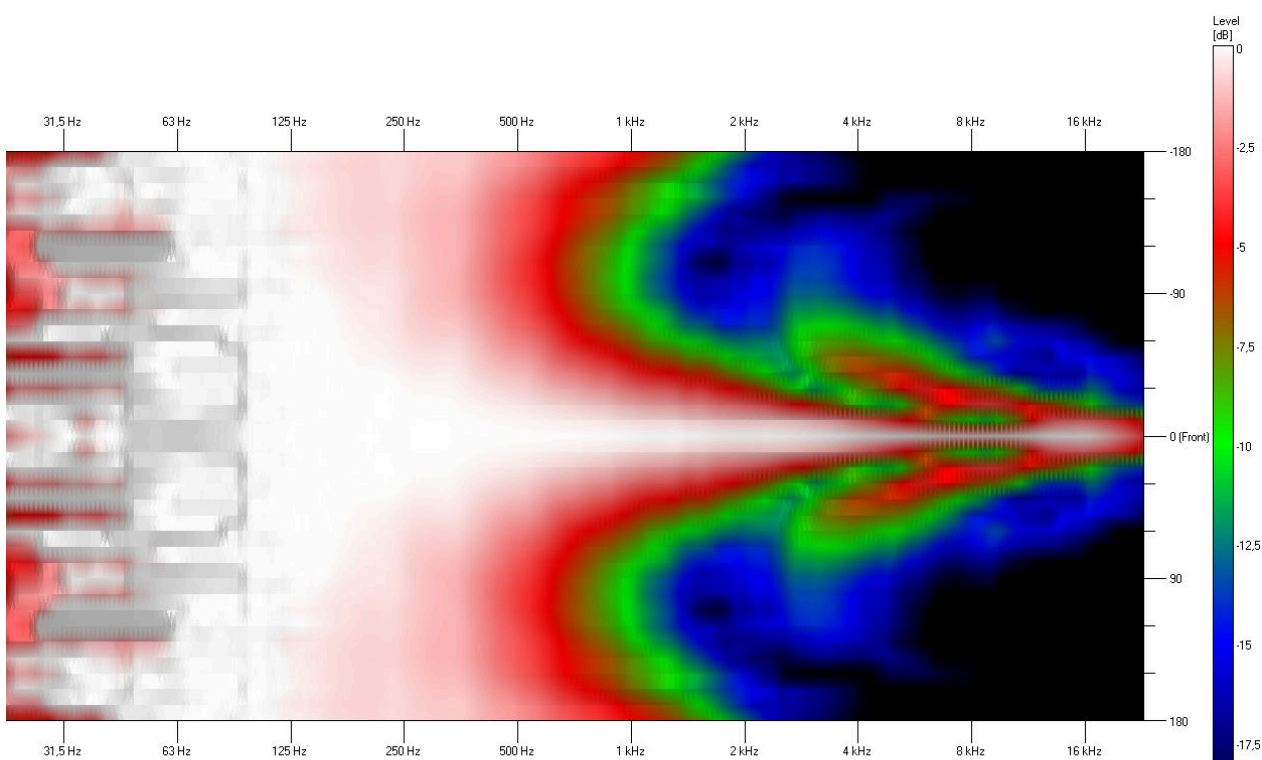


Isobar

Horizontal

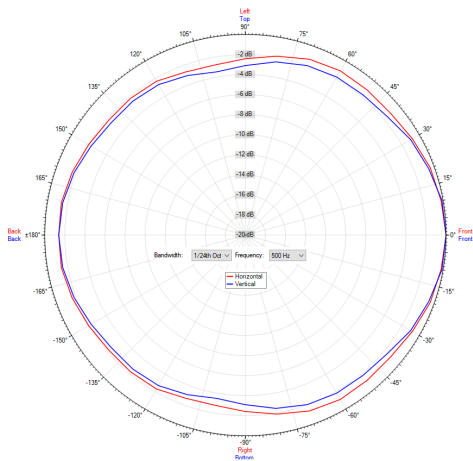


Vertical

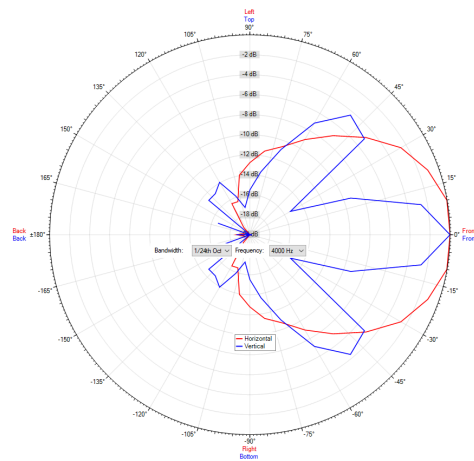


Polar Diagram

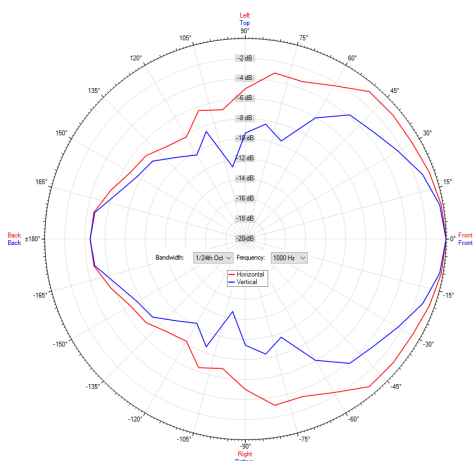
Polar Diagram 500Hz



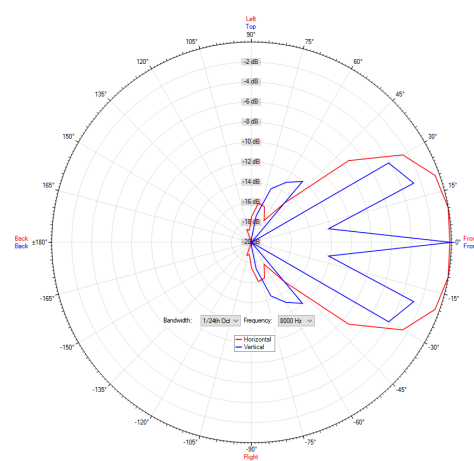
Polar Diagram 4000Hz



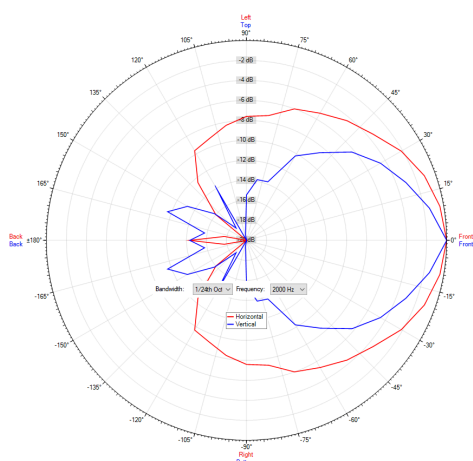
Polar Diagram 1000Hz



Polar Diagram 8000Hz



Polar Diagram 2000Hz



ic audio loudspeakers are tested and classified according to the IEC standard 60529 (degree of protection by enclosure) against the penetration of foreign objects and moisture. The classification is conforming to standards through characterization with a fixed code. This code consists of the letters IP (International Protection) followed by two digits. The first digit indicates the degree of protection against dust and the second digit the degree of protection against water. Please note that the testing of the products has been carried out in laboratory conditions which are not always 100% comparable with the conditions of different installation environments. This protection can be reduced due to normal wear and tear depending on the installation environment.

RoHS compliant (2011/65/EU)

The IP rating specified is based on ic audio test results, not on CNBOP-PIB test results. Certification only verifies the minimum requirements for EN54-24 compliance.



Artikel Nr. : 20122601
Packing Unit: 1

