



DA 10-260/T-EN54

- vandal-proof
- aluminium housing
- BS 5839



EN 54-24:2008
Ref. Nr.: 003-14
ID-Code: SAA-LS14
1438-CPR-1000

ic audio GmbH, Boehringerstraße 14a,
D-68307 Mannheim, Germany

CE-Symbol gemäß Richtlinie 93/68EWG

The 10W powered speaker is equipped with two 130mm full-range loudspeakers and a 100V line transformer with 4 power adjustments. A robust powder-coated aluminium housing in RAL 9010, and vandal-resistant feet ensure a permanent installation of this speaker. For additional reliability, a 2-pin ceramic block and a thermal fuse are provided and the speaker chassis is impregnated against wetness.

The speaker is also secured with the high protection class IP 65 against the risks of environmental influences.

Perfectly suitable for installation in corridors and hallways. The speaker is compliant with the British Standard BS 5839, Part 8.

Product	DA 10-260/T-EN54
Artikel Nr.	20122650

Acoustics

Power	10/6/3/1,5 W
Impedance (100V)	1000/1667/3333/6667 ohm
Speaker \varnothing	130 mm
Frequency Range	237 - 12.400 Hz
Frequency Response	79 - 17.500 Hz
SPL 1W/1m, peak	95,3 dB
SPL 1W/4m, peak	83,3 dB
SPL Pmax/4m, peak	93,3 dB
SPL IEC268-5, 1W/1m	89,0 dB
SPL IEC268-5, Pmax/1m	99,0 dB
Sensitivity EN54-24, 1W/1m	89,6 dB
Sensitivity EN54-24, 1W/4m	77,0 dB
Dispersion -6dB, 500Hz	h/v 2x130°
Dispersion -6dB, 1KHz	h/v 2x150°
Dispersion -6dB, 2KHz	h/v 2x145°
Dispersion -6dB, 4KHz	h/v 2x75°

Connections and Housing

Connector	2-pin ceramic block
Terminal Diameter	3,2 mm
Maximum Cable Passage	8 mm ²
Temperature Range	-25 / +70 C°
Type A/B	B
Dimensions	201x176x160 mm
Weight (net)	2,30 kg
Housing	aluminium
Colour	RAL 9010
Mounting	screws
IP Rating	IP65

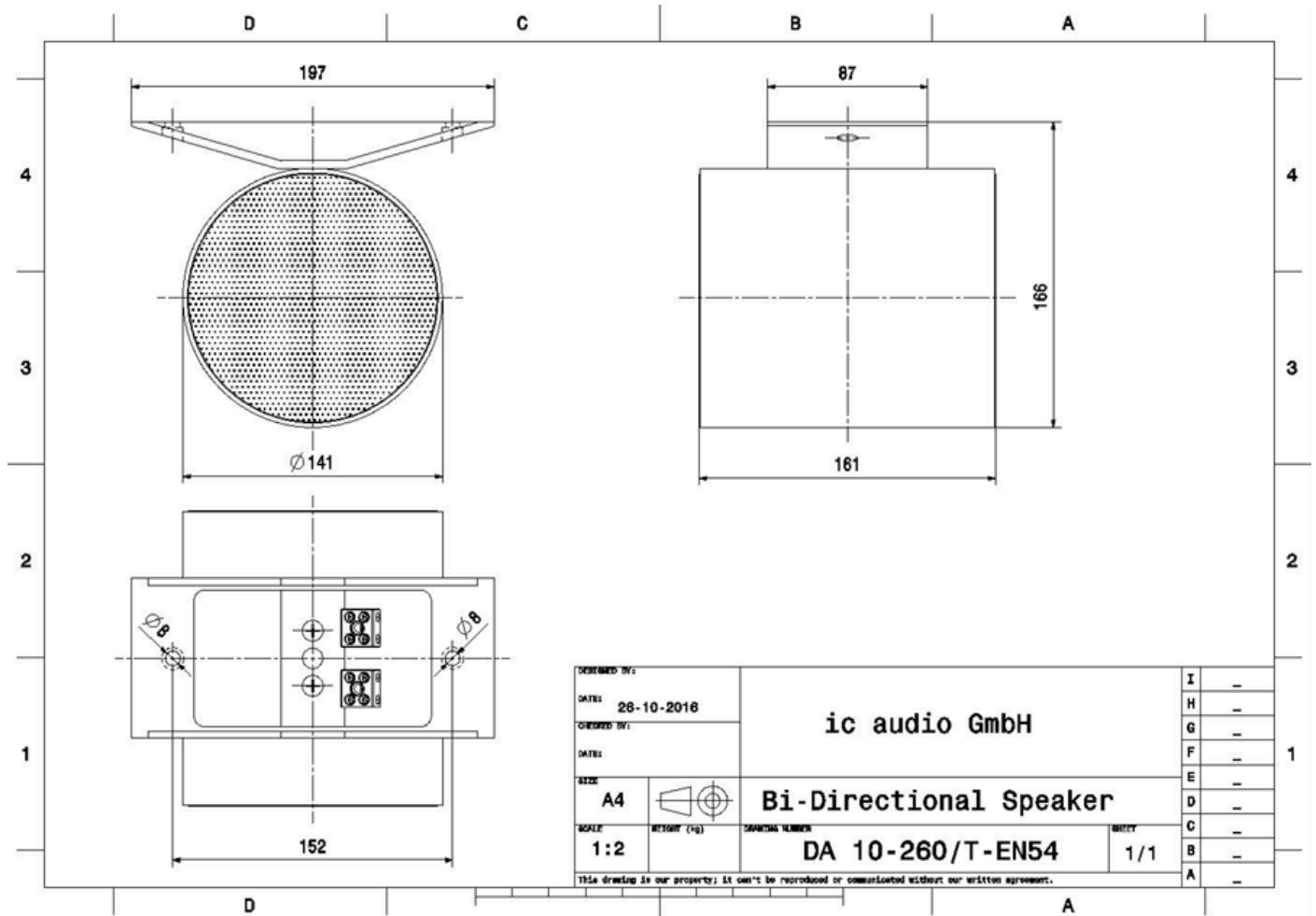
Certification

Ref. Nr.	003-14
ID-Code	SAA-LS14
Certificate Number	1438-CPR-1000

Product Attributes

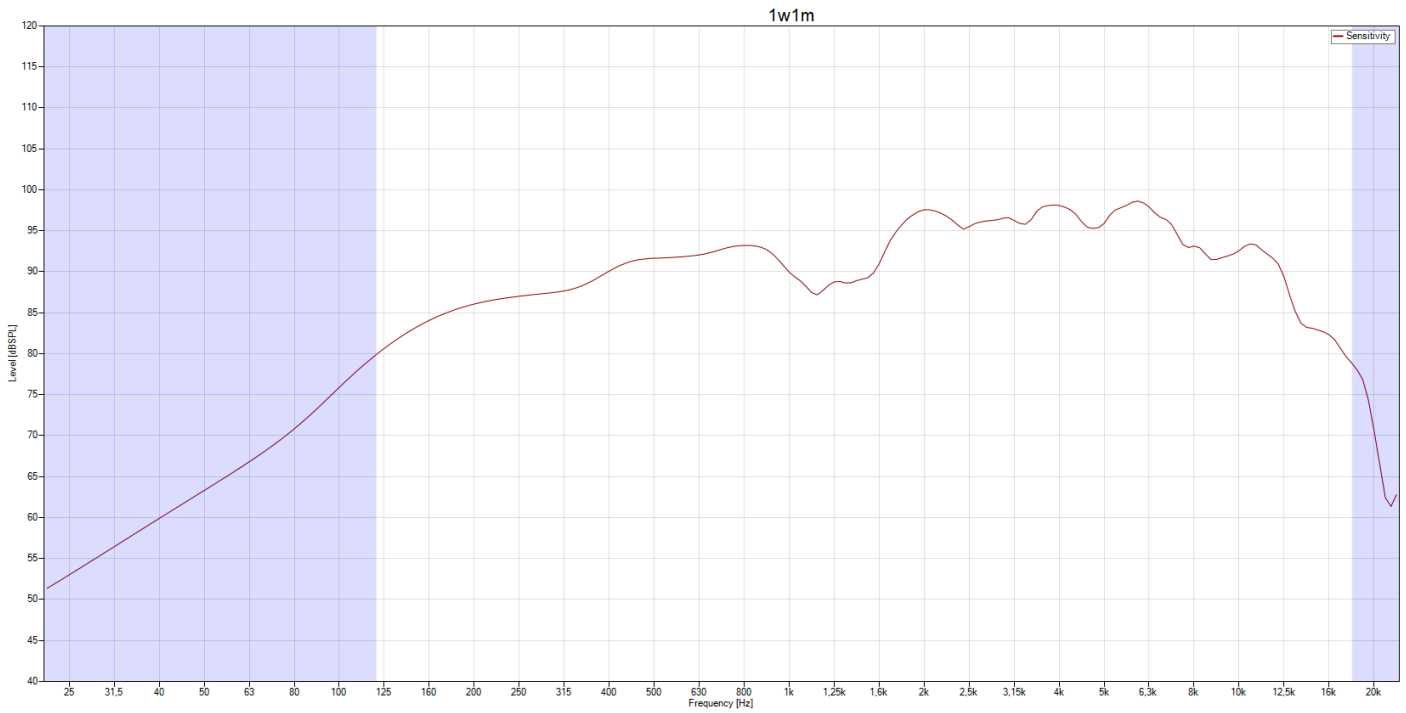


Technical Drawing

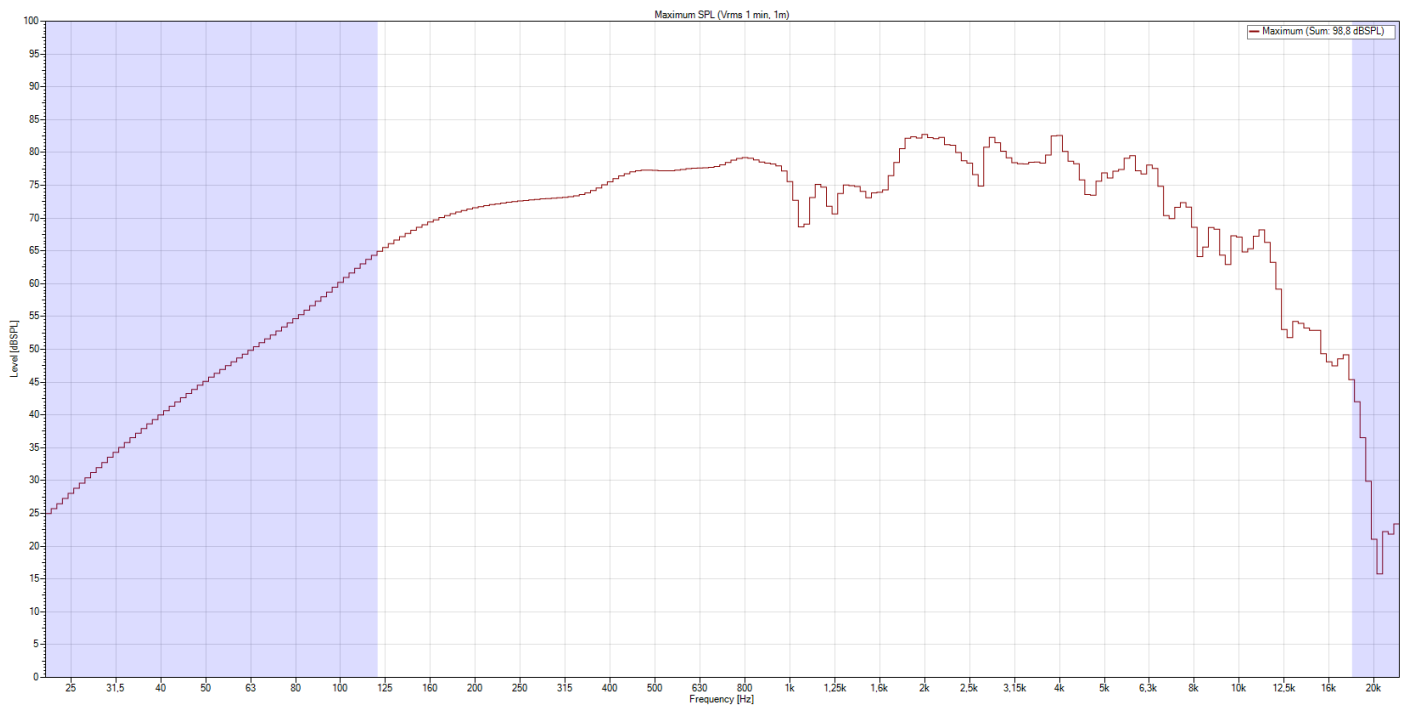


Frequency Response Diagram

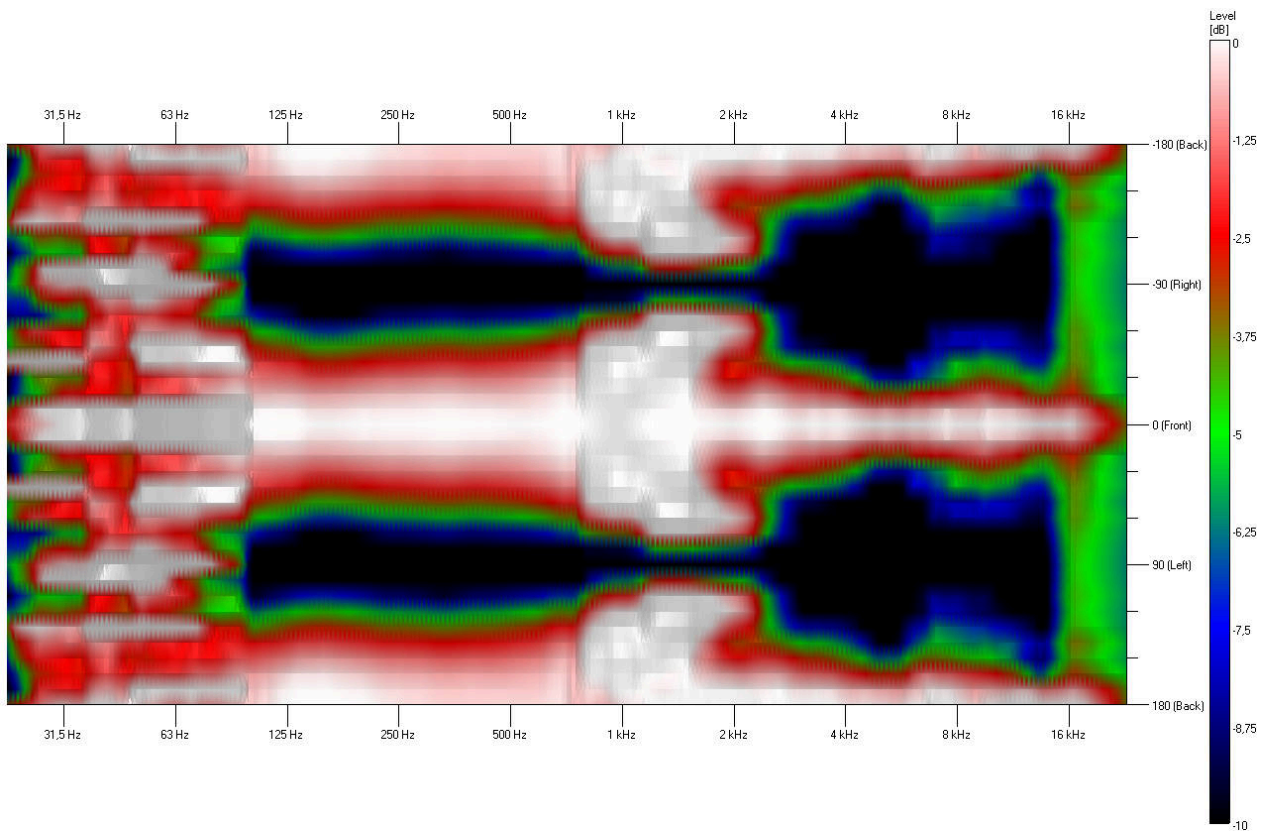
Sensitivity



SPL Max

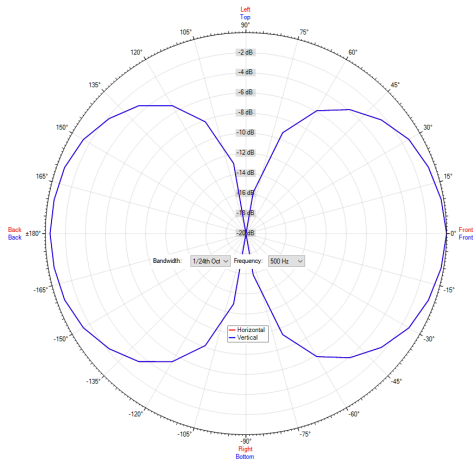


Isobar

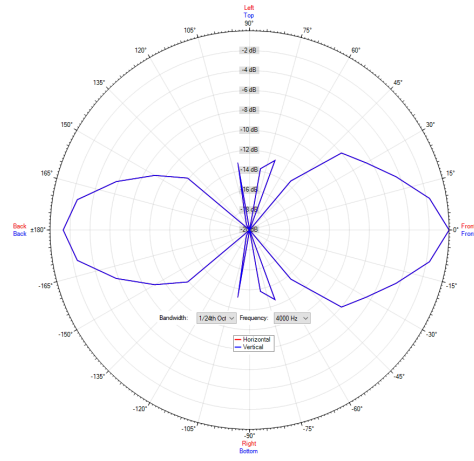


Polar Diagram

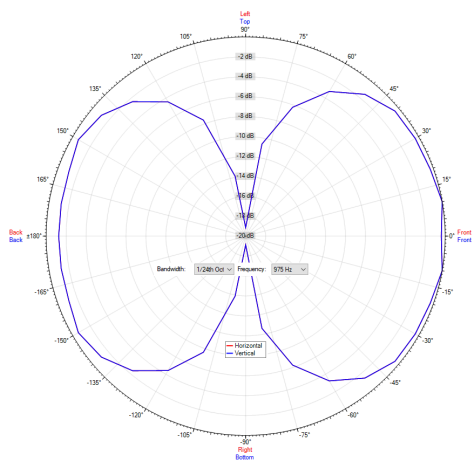
Polar Diagram 500Hz



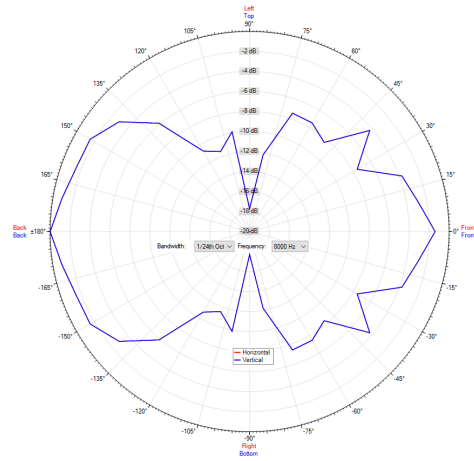
Polar Diagram 4000Hz



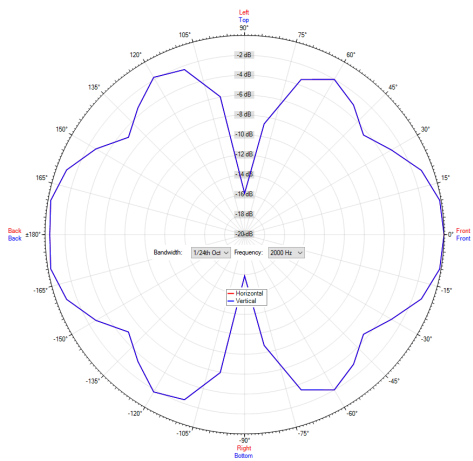
Polar Diagram 1000Hz



Polar Diagram 8000Hz



Polar Diagram 2000Hz



ic audio loudspeakers are tested and classified according to the IEC standard 60529 (degree of protection by enclosure) against the penetration of foreign objects and moisture. The classification is conforming to standards through characterization with a fixed code. This code consists of the letters IP (International Protection) followed by two digits. The first digit indicates the degree of protection against dust and the second digit the degree of protection against water. Please note that the testing of the products has been carried out in laboratory conditions which are not always 100% comparable with the conditions of different installation environments. This protection can be reduced due to normal wear and tear depending on the installation environment.

RoHS compliant (2011/65/EU)

The IP rating specified is based on ic audio test results, not on CNBOP-PIB test results. Certification only verifies the minimum requirements for EN54-24 compliance.



Artikel Nr. : 20122650

Packing Unit: 8

