



DL-BR15-130/T plus-EN54

- bass-reflex
- quick mounting
- impact-resistant ABS



EN 54-24:2008
Ref. Nr.: 006-14
ID-Code: SAA-LS15
1438-CPR-0435

ic audio GmbH, Boehringerstraße 14a,
D-68307 Mannheim, Germany

CE-Symbol gemäß Richtlinie 93/68EWG

The 15W powered speaker is equipped with a 130mm 2-way bass-reflex system with a neodymium tweeter and a 100V transformer with 4 power adjustments. Low-impedance operation is also possible. The impact-resistant ABS housing in RAL 9016 guarantees long-term stability. For additional reliability, a thermal fuse and a strain relief fitting are provided.

The speaker is also protected against the risks of environmental influences with protection class IP 21C and the speaker chassis is impregnated against wetness. Quick and uncomplicated screw mounting, the connection is made via a sturdy 4-pole screw terminal.

Thanks to modern 2-way technology, particularly suitable for installations with demanding sound quality.

Product	DL-BR 15-130/T plus-EN54
Artikel Nr.	20142881

Acoustics

Power	15 / 7,5 / 3,75 / 1,9 (8) W
Impedance (100V)	667/1333/2667/5263 ohm
Speaker ø	130 mm
Frequency Range	100 - 22.800 Hz
Frequency Response	87 - 23.600 Hz
SPL 1W/1m, peak	92,9 dB
SPL 1W/4m, peak	80,9 dB
SPL Pmax/4m, peak	92,9 dB
SPL IEC268-5, 1W/1m	86,0 dB
Sensitivity EN54-24, 1W/1m	86,2 dB
Sensitivity EN54-24, 1W/4m	74,2 dB
Dispersion -6dB, 500Hz	h/v 180°
Dispersion -6dB, 1KHz	h/v 180°
Dispersion -6dB, 2KHz	h/v 145°
Dispersion -6dB, 4KHz	h/v 95°

Connections and Housing

Connector	4-pin screw terminal
Terminal Diameter	2,5 mm
Maximum Cable Passage	4,9 mm ²
Temperature Range	-10 / +55 C°
Type A/B	A
Dimensions	213,5 x 152 mm
Ceiling Cut-out	178 mm
Weight (net)	1,73 kg
Housing	ABS
Colour	RAL 9016
Mounting	Quick-mount clamps
IP Rating	IP21

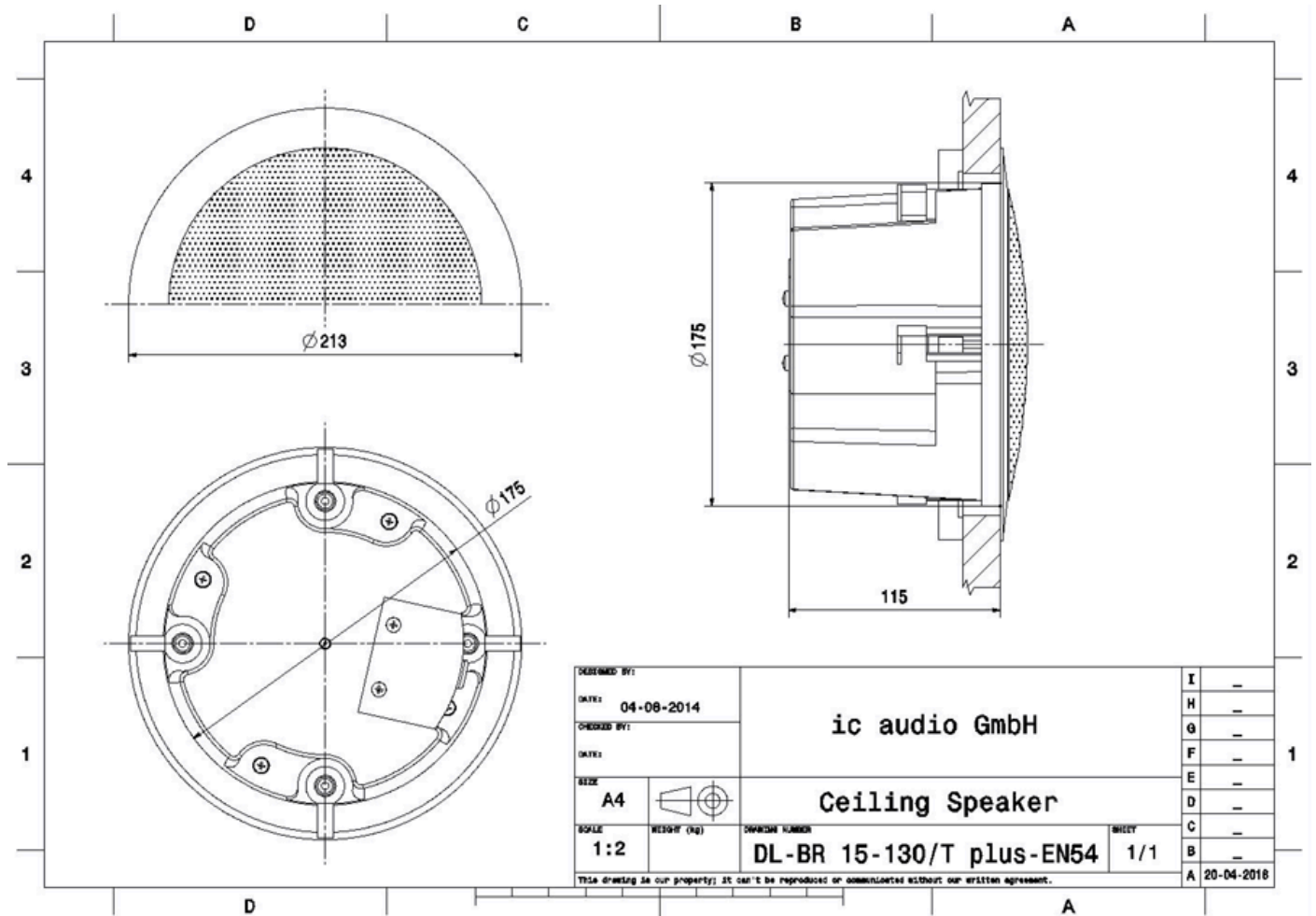
Certification

Ref. Nr.	006-14
ID-Code	SAA-LS15
Certificate Number	1438-CPR-0435

Product Attributes

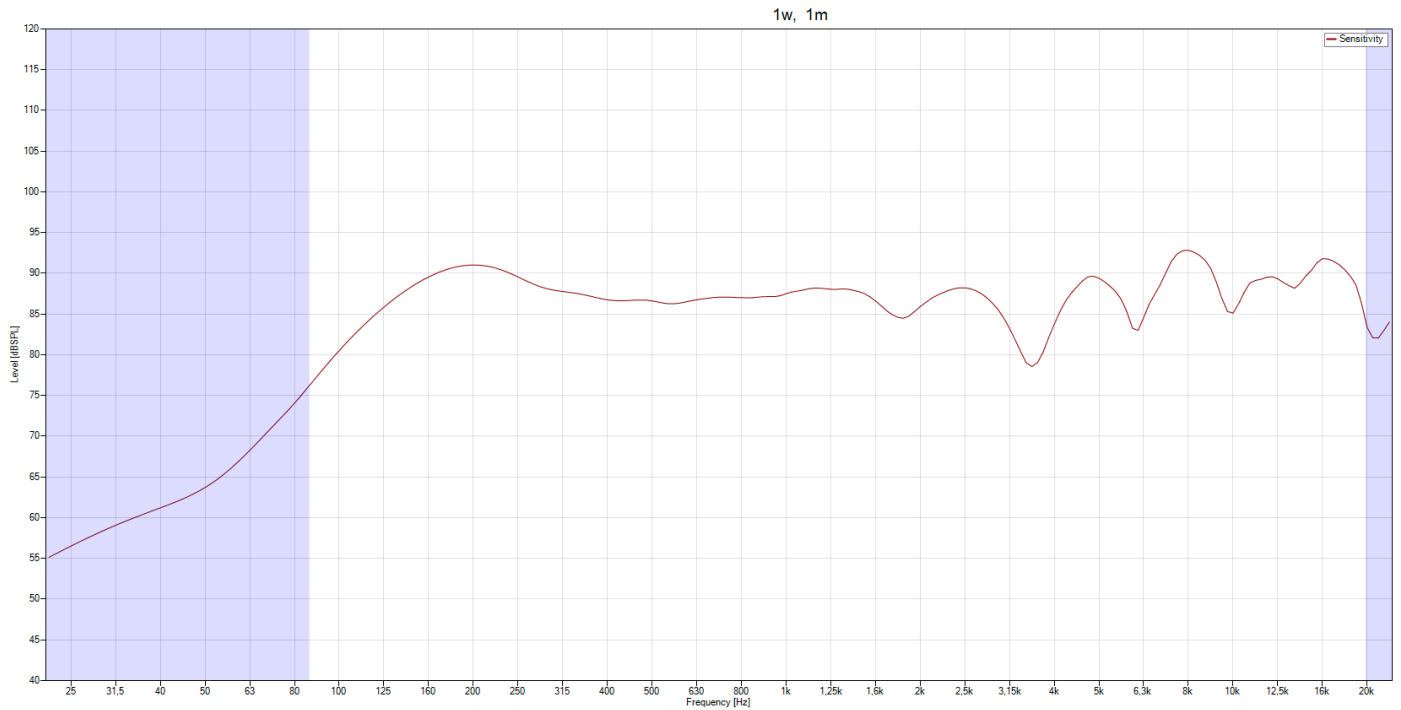


Technical Drawing

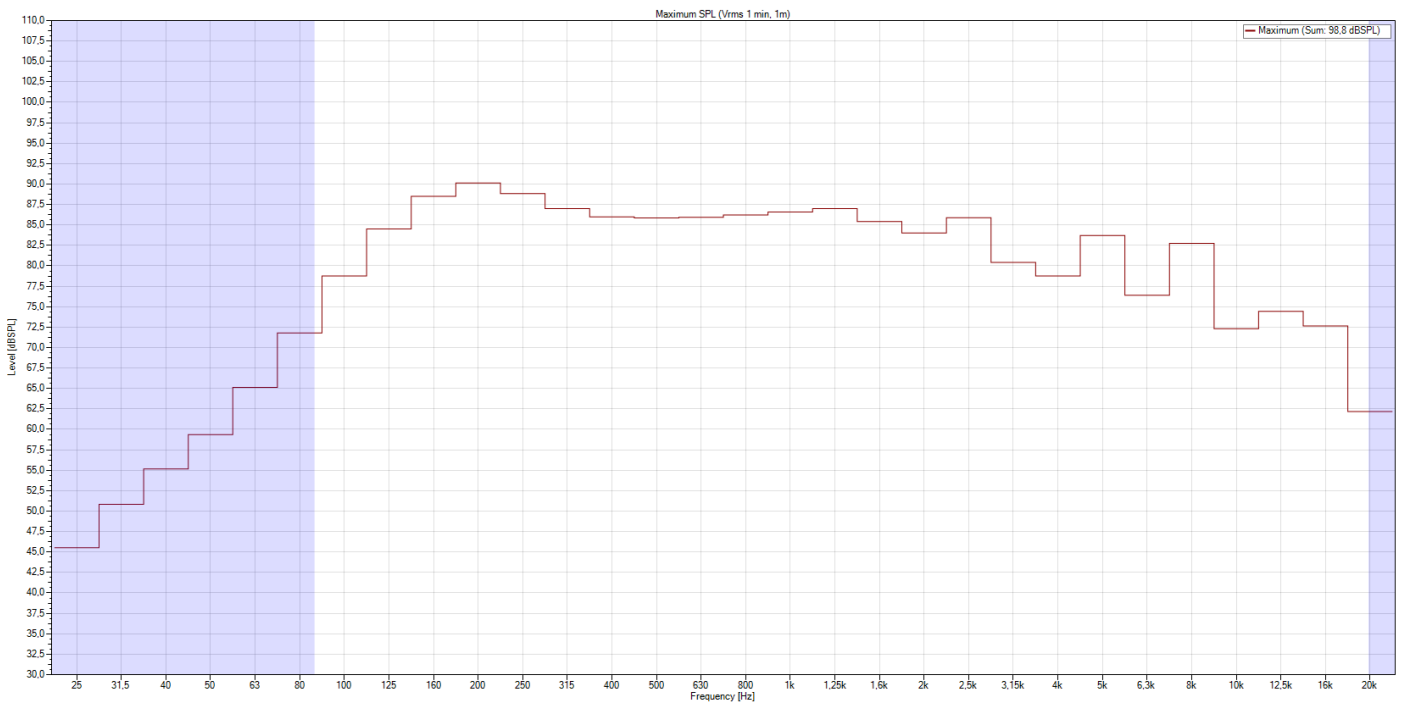


Frequency Response Diagram

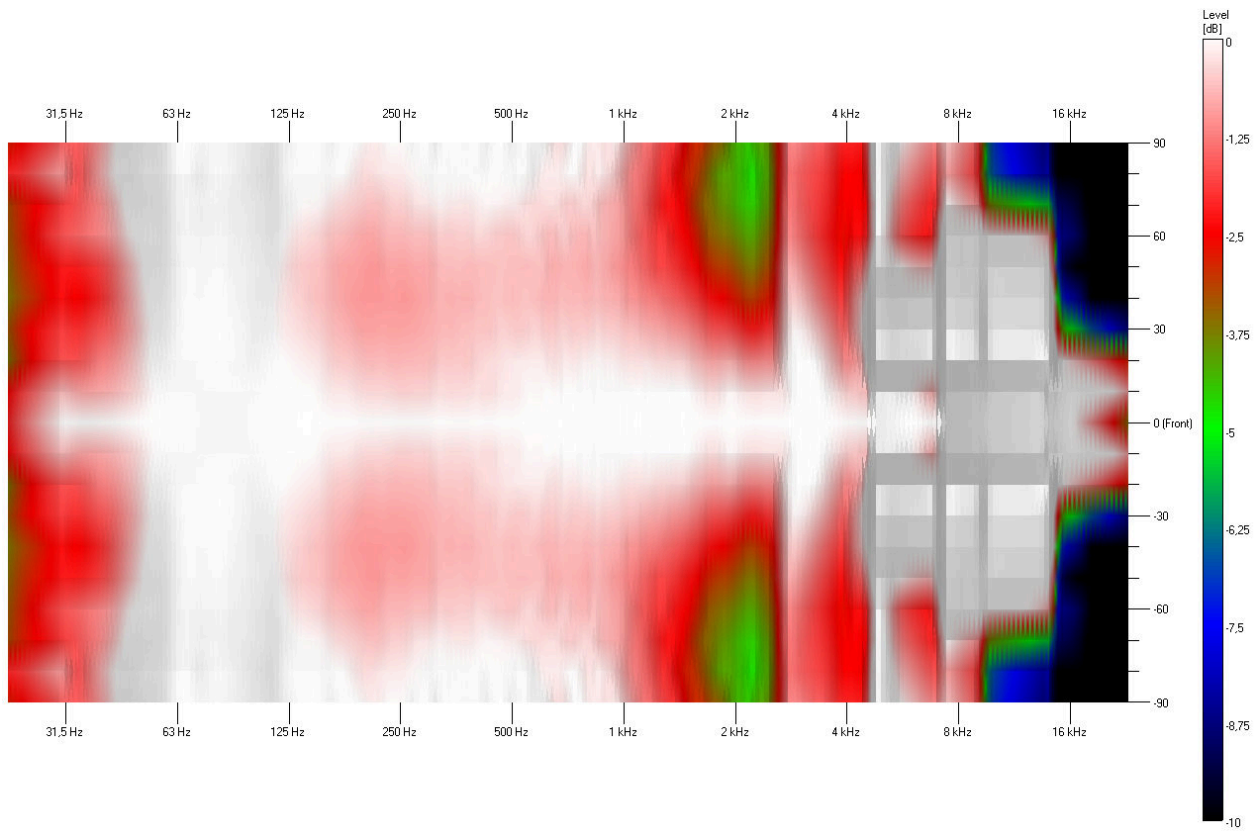
Sensitivity



SPL Max

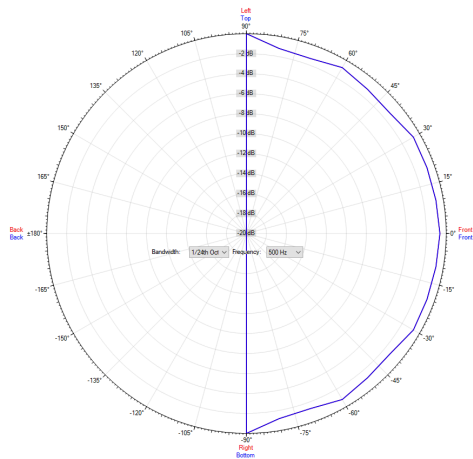


Isobar

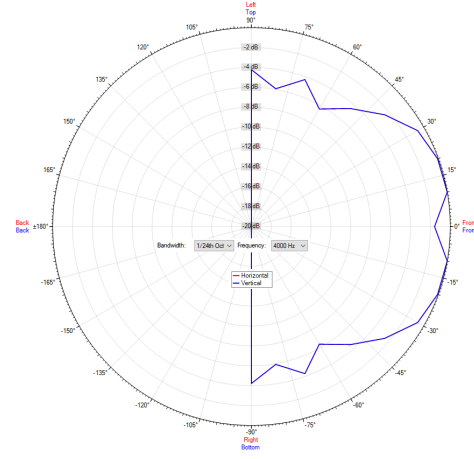


Polar Diagram

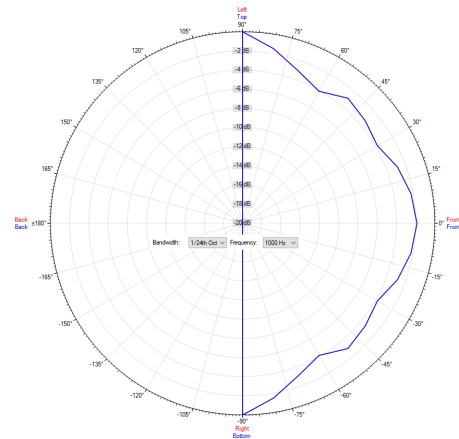
Polar Diagram 500Hz



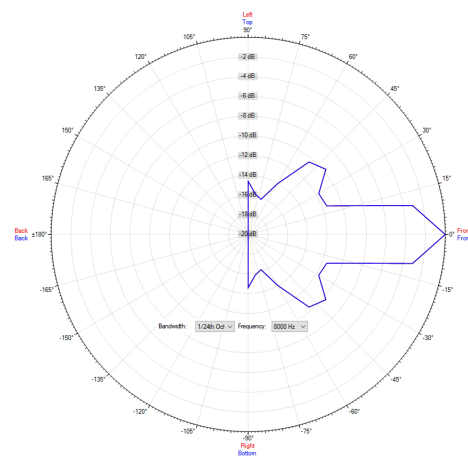
Polar Diagram 4000Hz



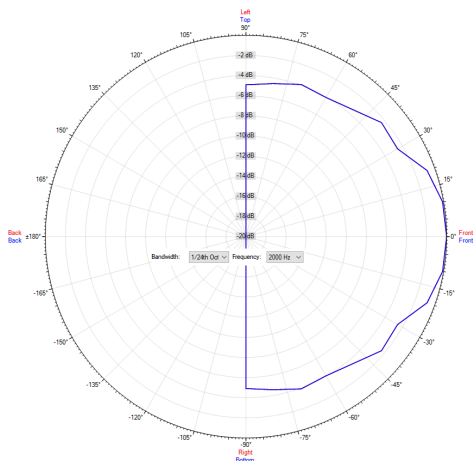
Polar Diagram 1000Hz



Polar Diagram 8000Hz



Polar Diagram 2000Hz



ic audio loudspeakers are tested and classified according to the IEC standard 60529 (degree of protection by enclosure) against the penetration of foreign objects and moisture. The classification is conforming to standards through characterization with a fixed code. This code consists of the letters IP (International Protection) followed by two digits. The first digit indicates the degree of protection against dust and the second digit the degree of protection against water. Please note that the testing of the products has been carried out in laboratory conditions which are not always 100% comparable with the conditions of different installation environments. This protection can be reduced due to normal wear and tear depending on the installation environment.

RoHS compliant (2011/65/EU)

The IP rating specified is based on ic audio test results, not on CNBOP-PIB test results. Certification only verifies the minimum requirements for EN54-24 compliance.



Artikel Nr. : 20142881

Packing Unit: 8

