

WU-SW 06-165/T Metal-EN54



- Metal front
- Thermal fuse
- Sturdy screw terminal



15

EN 54-24:2008

Ref. Nr.: 018-15

ID-Code: SAA-LS18

1438-CPR-0270

ic audio GmbH, Boehringerstraße 14a,
D-68307 Mannheim, Germany

CE-Symbol gemäß Richtlinie 93/68EWG

Baffle loudspeaker for voice alarm, metal front, with non-slip adhesive corners for increased stability, for invisible public address in grid ceilings. Suitable for voice announcements and background music with excellent sound quality in buildings.

Waterproofed full-range speaker chassis, certified according to EN 54-24. Equipped with thermal fuse and plastic housing in RAL 9005. A comfortable connection of the speaker is made possible by a sturdy 4-pin screw terminal. Protected by protection class IP 21C against the risks of environmental influences.

Product	WU-SW 06-165/T Metal-EN54
Artikel Nr.	20142912

Acoustics

Power	6/3/1,5 W
Impedance (100V)	1667/3333/6667 ohm
Speaker \varnothing	165 mm
Frequency Range	272 - 23.700 Hz
Frequency Response	106 - 23.500 Hz
SPL 1W/1m, peak	99,5 dB
SPL 1W/4m, peak	87,5 dB
SPL Pmax/4m, peak	95,2 dB
SPL IEC268-5, 1W/1m	94,0 dB
Sensitivity EN54-24, 1W/1m	92,1 dB
Sensitivity EN54-24, 1W/4m	82,0 dB
Dispersion -6dB, 500Hz	h=180° v=180°
Dispersion -6dB, 1KHz	h=180° v=180°
Dispersion -6dB, 2KHz	h=110° v=120°
Dispersion -6dB, 4KHz	h=60° v=60°

Connections and Housing

Connector	4-pin screw terminal
Temperature Range	-10 / +55 C°
Type A/B	A
Dimensions	300 x 200 x 76 mm
Weight (net)	1,68 kg
Housing	ABS
Colour	RAL 9005
Mounting	Face-down on ceiling-grid
IP Rating	IP21

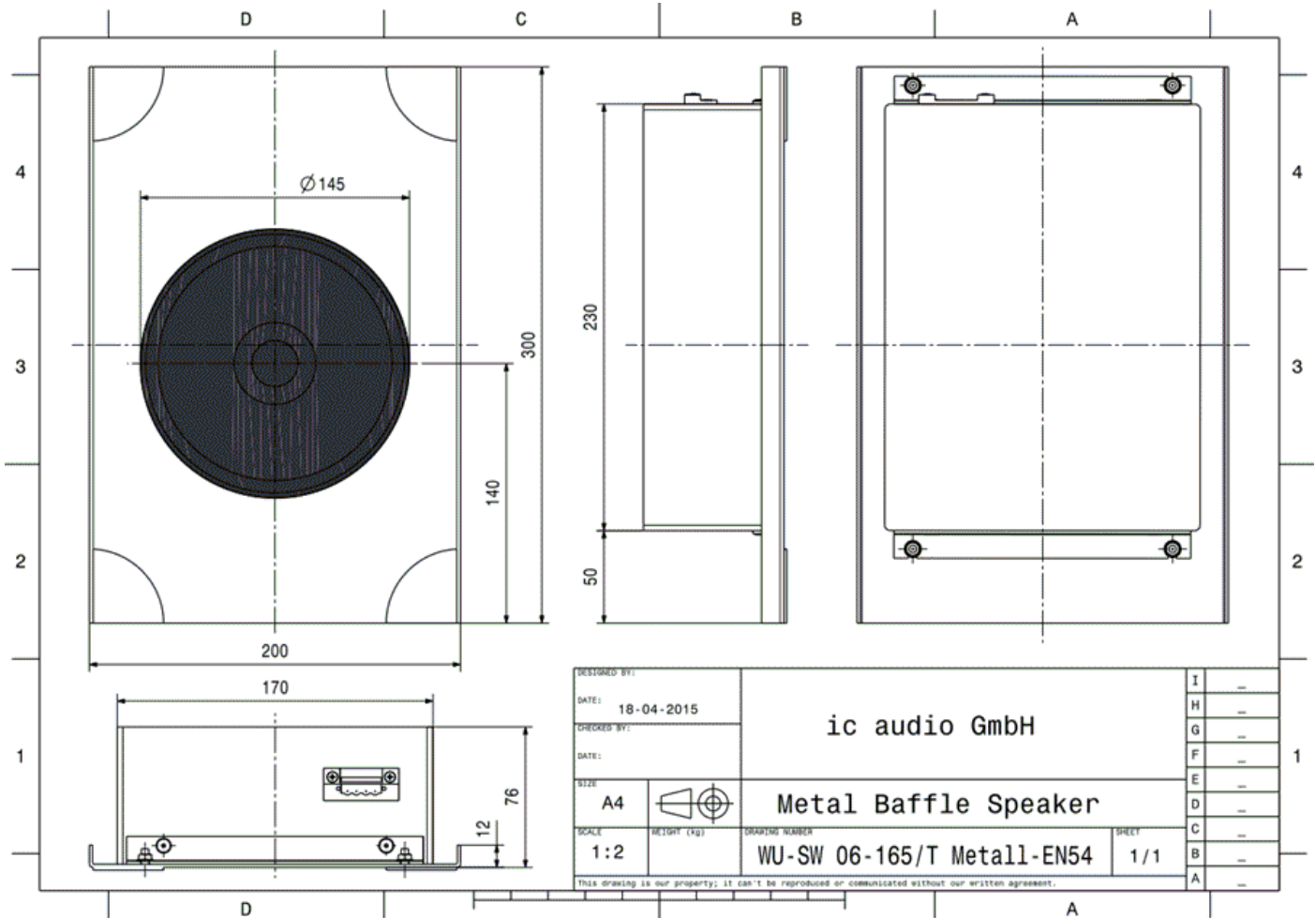
Certification

Ref. Nr.	018-15
ID-Code	SAA-LS18
Certificate Number	1438-CPR-0270

Product Attributes

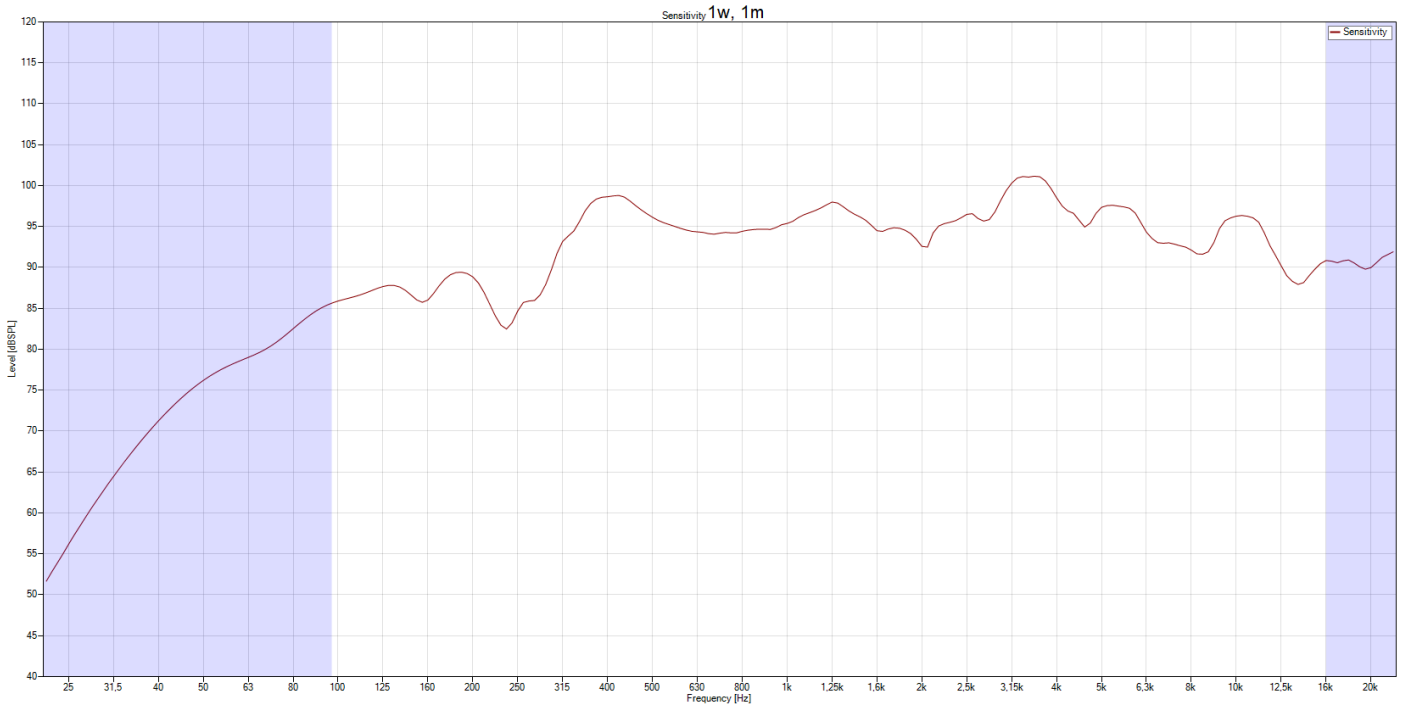


Technical Drawing

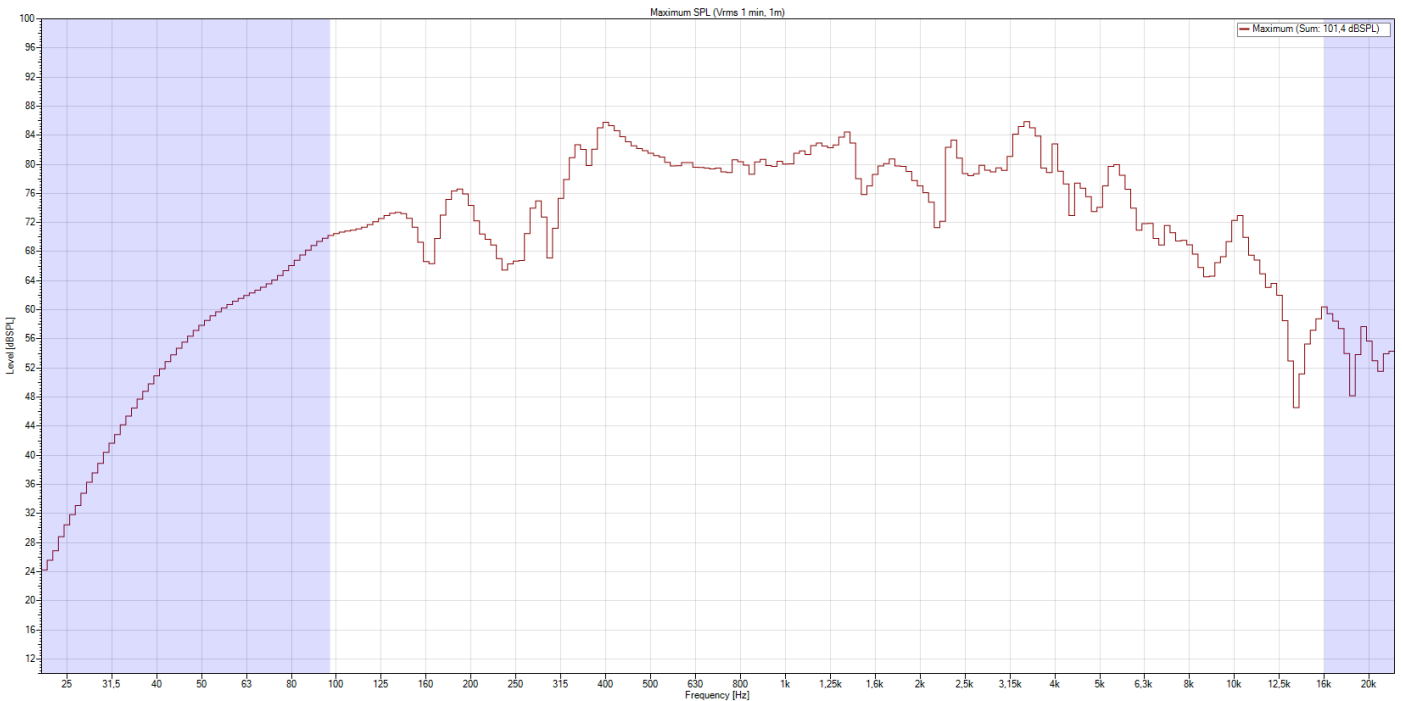


Frequency Response Diagram

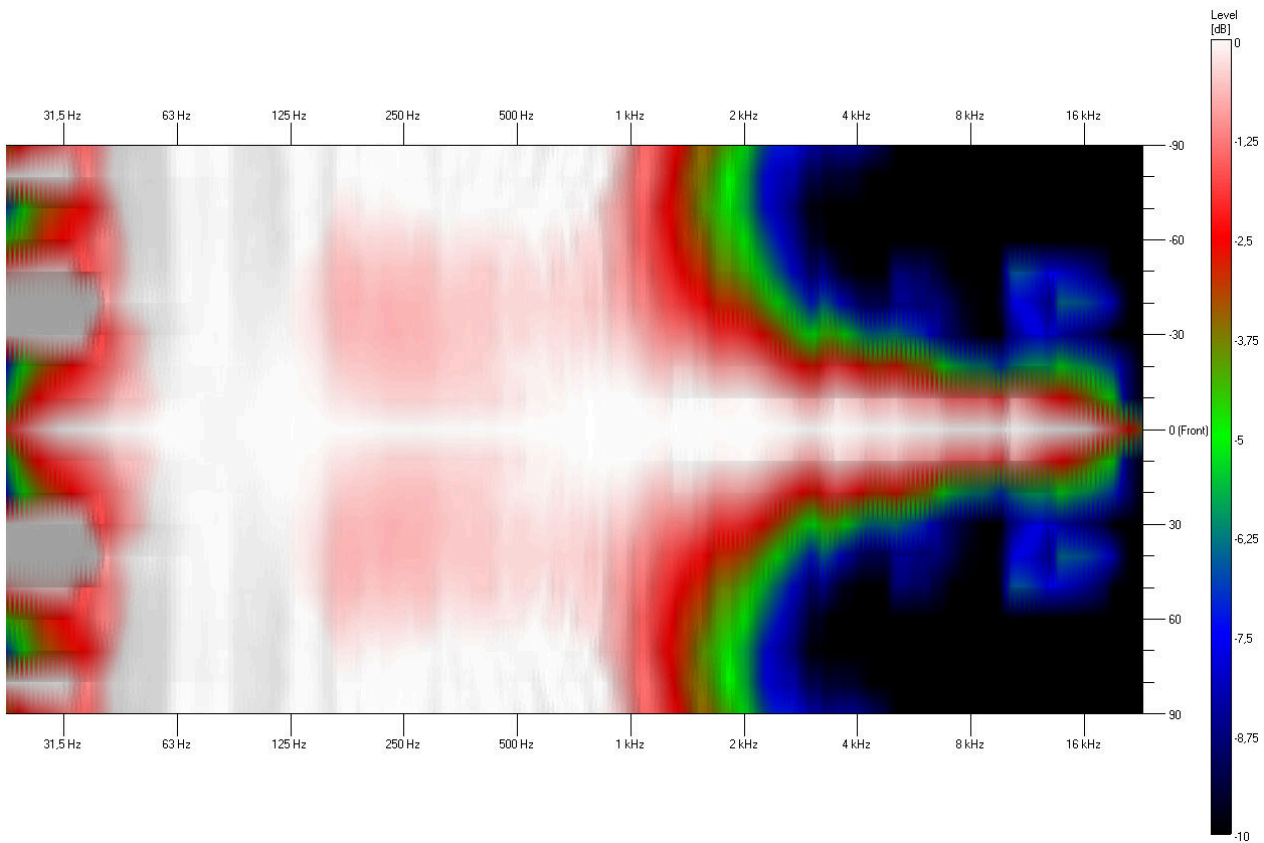
Sensitivity



SPL Max

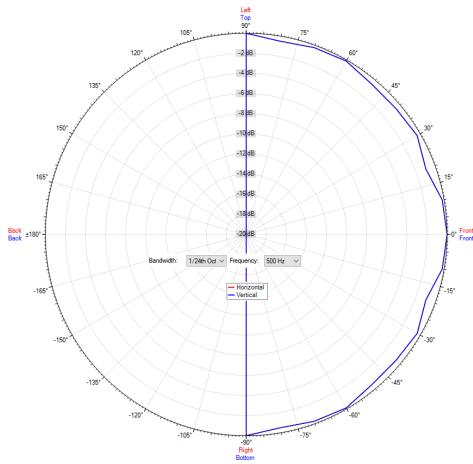


Isobar

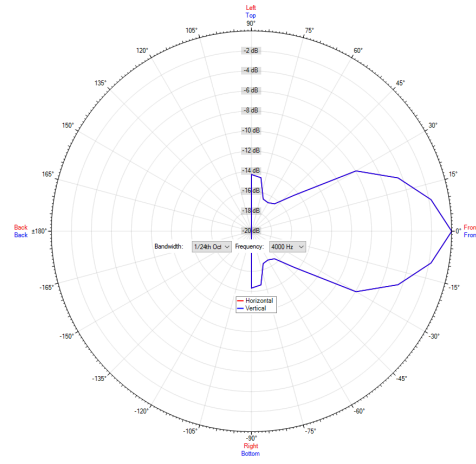


Polar Diagram

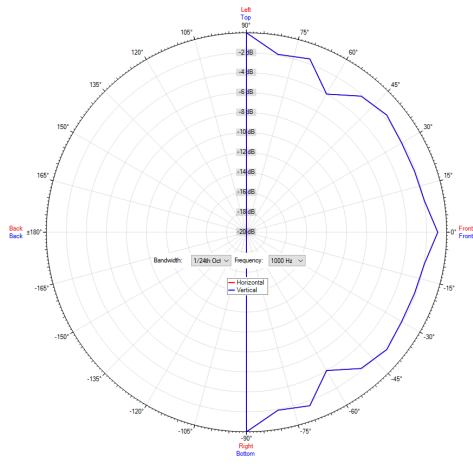
Polar Diagram 500Hz



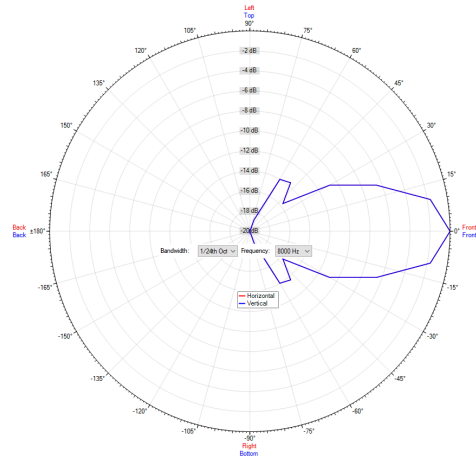
Polar Diagram 4000Hz



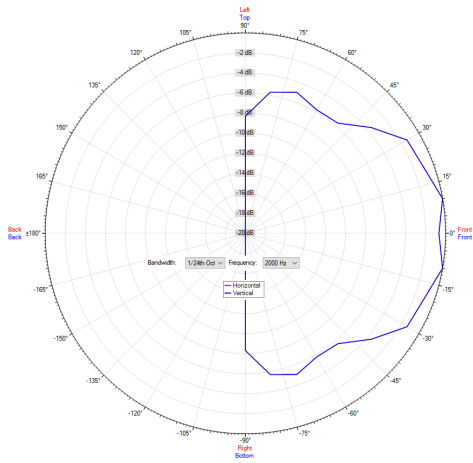
Polar Diagram 1000Hz



Polar Diagram 8000Hz



Polar Diagram 2000Hz



ic audio loudspeakers are tested and classified according to the IEC standard 60529 (degree of protection by enclosure) against the penetration of foreign objects and moisture. The classification is conforming to standards through characterization with a fixed code. This code consists of the letters IP (International Protection) followed by two digits. The first digit indicates the degree of protection against dust and the second digit the degree of protection against water. Please note that the testing of the products has been carried out in laboratory conditions which are not always 100% comparable with the conditions of different installation environments. This protection can be reduced due to normal wear and tear depending on the installation environment.

RoHS compliant (2011/65/EU)

The IP rating specified is based on ic audio test results, not on CNBOP-PIB test results. Certification only verifies the minimum requirements for EN54-24 compliance.



Artikel Nr. : 20142912

Packing Unit: 8

