



DL-S 50-165/T plus-EN54

- 2-way system
- thermal fuse
- magnetic fastening of grille



EN 54-24:2008
Ref. Nr.: 009-19
ID-Code: SAA-LS09
1438-CPR-0431

ic audio GmbH, Boehringerstraße 14a,
D-68307 Mannheim, Germany

CE-Symbol gemäß Richtlinie 93/68EWG

2-Way ceiling speaker with fire dome for voice alarm applications certified EN 54-24, suitable for voice announcements and background music with excellent sound quality in buildings. The 50W powered speaker is equipped with a 165mm 2-way system featuring a high-quality tweeter and a 100V transformer with 4 power adjustments. Low-impedance operation is also possible. The sturdy metal housing in RAL 9016 guarantees long-term durability.

Thanks to an innovative magnetic fastening, the finely perforated speaker grille can quickly be removed or replaced by a grille of a different colour, even after the installation.

The speaker is impregnated against dampness. Protection class IP 21C secures the speaker against the risks of environmental influences.

Fast and easy installation via a screw mounting system.

Product	DL-S 50-165/T plus-EN54
Artikel Nr.	20194132

Acoustics

Power	50/25/12,5/6,25/ (8) W
Impedance (100V)	200/400/800/1600/ ohm
Speaker ø	165 mm
Frequency Range	65-24.000 Hz
Frequency Response	80-22.200 Hz
SPL 1W/1m, peak	94,1 dB
SPL 1W/4m, peak	82,1 dB
SPL Pmax/4m, peak	99,0 dB
SPL IEC268-5, 1W/1m	89,5 dB
SPL IEC268-5, Pmax/1m	106,5 dB
Sensitivity EN54-24, 1W/1m	89,5 dB
Sensitivity EN54-24, 1W/4m	77,5 dB
Dispersion -6dB, 500Hz	180°
Dispersion -6dB, 1KHz	180°
Dispersion -6dB, 2KHz	105°
Dispersion -6dB, 4KHz	56°

Connections and Housing

Connector	4-pin screw terminal
Terminal Diameter	2,5 mm
Maximum Cable Passage	4,9 mm ²
Temperature Range	-10 / +55 °C
Type A/B	A
Dimensions	264 x 239 mm
Ceiling Cut-out	238 mm
Weight (net)	3,75 kg
Housing	metal
Colour	RAL 9016
Mounting	Screw system
IP Rating	IP21

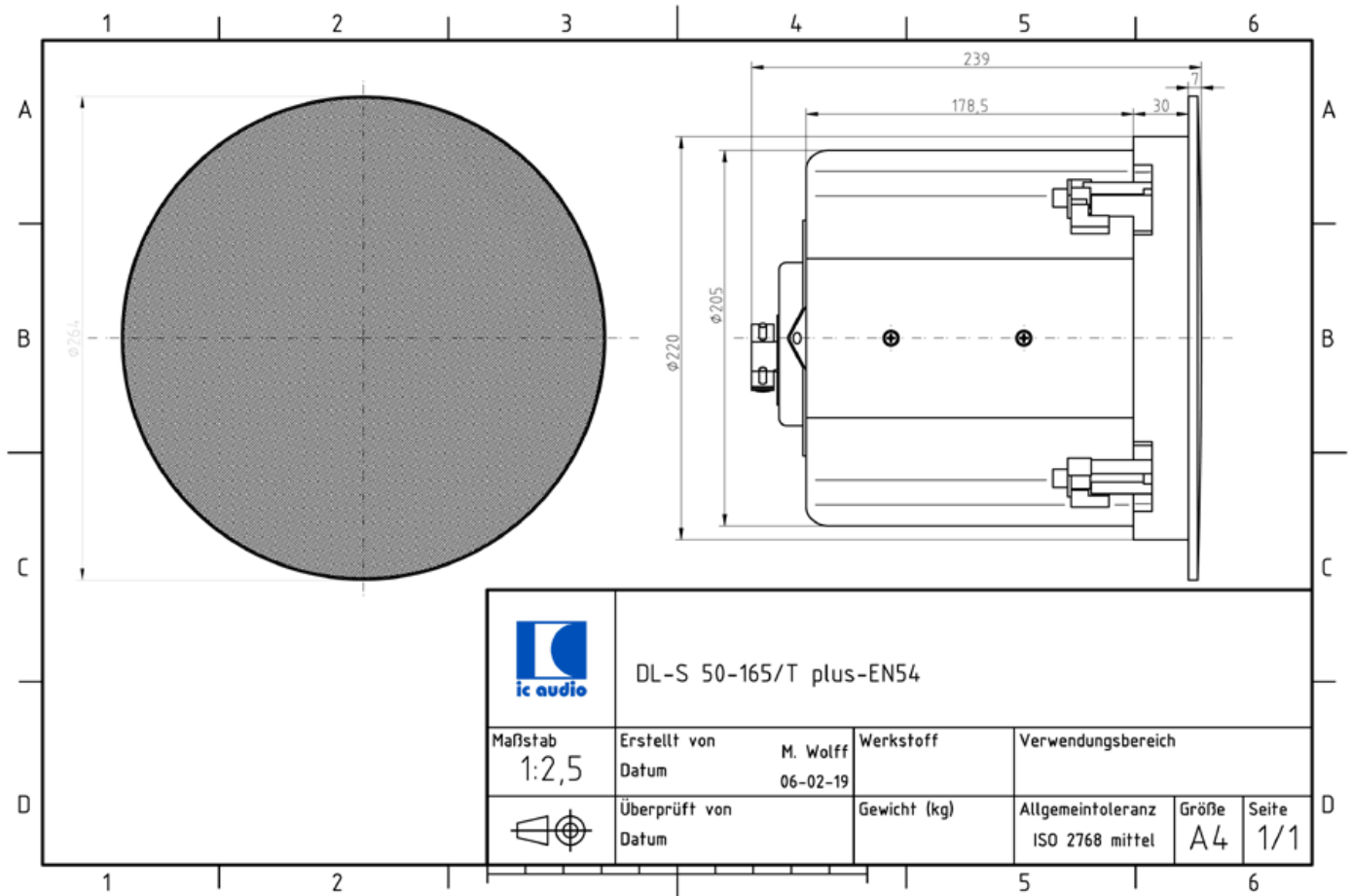
Certification

Ref. Nr.	009-19
ID-Code	SAA-LS09
Certificate Number	1438-CPR-0431

Product Attributes

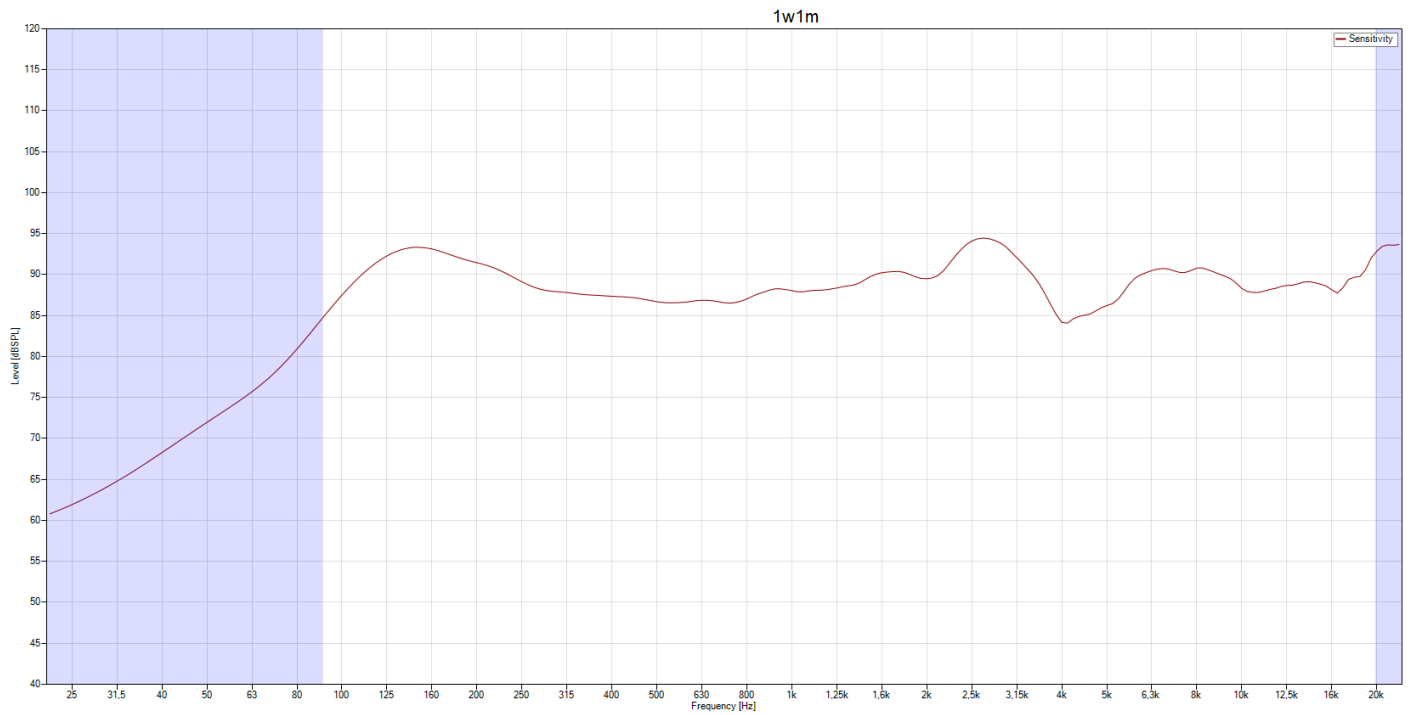


Technical Drawing

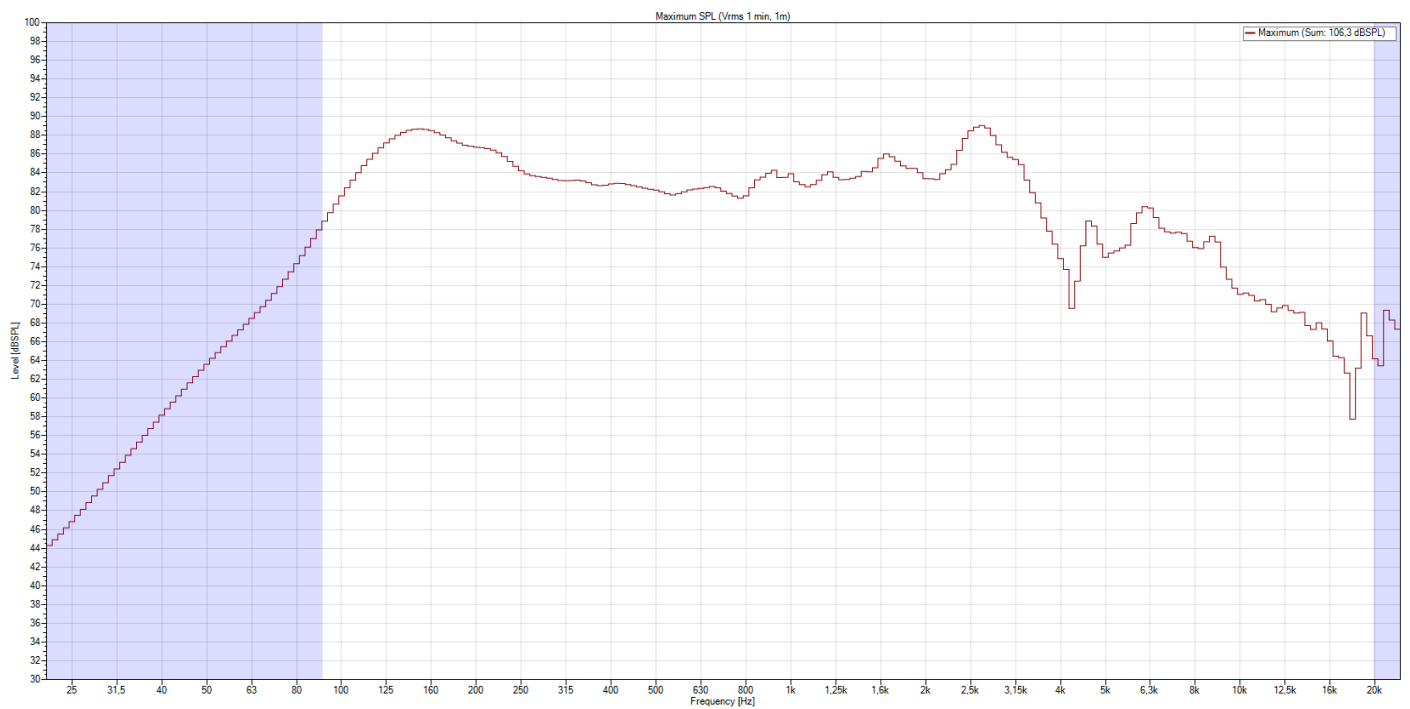


Frequency Response Diagram

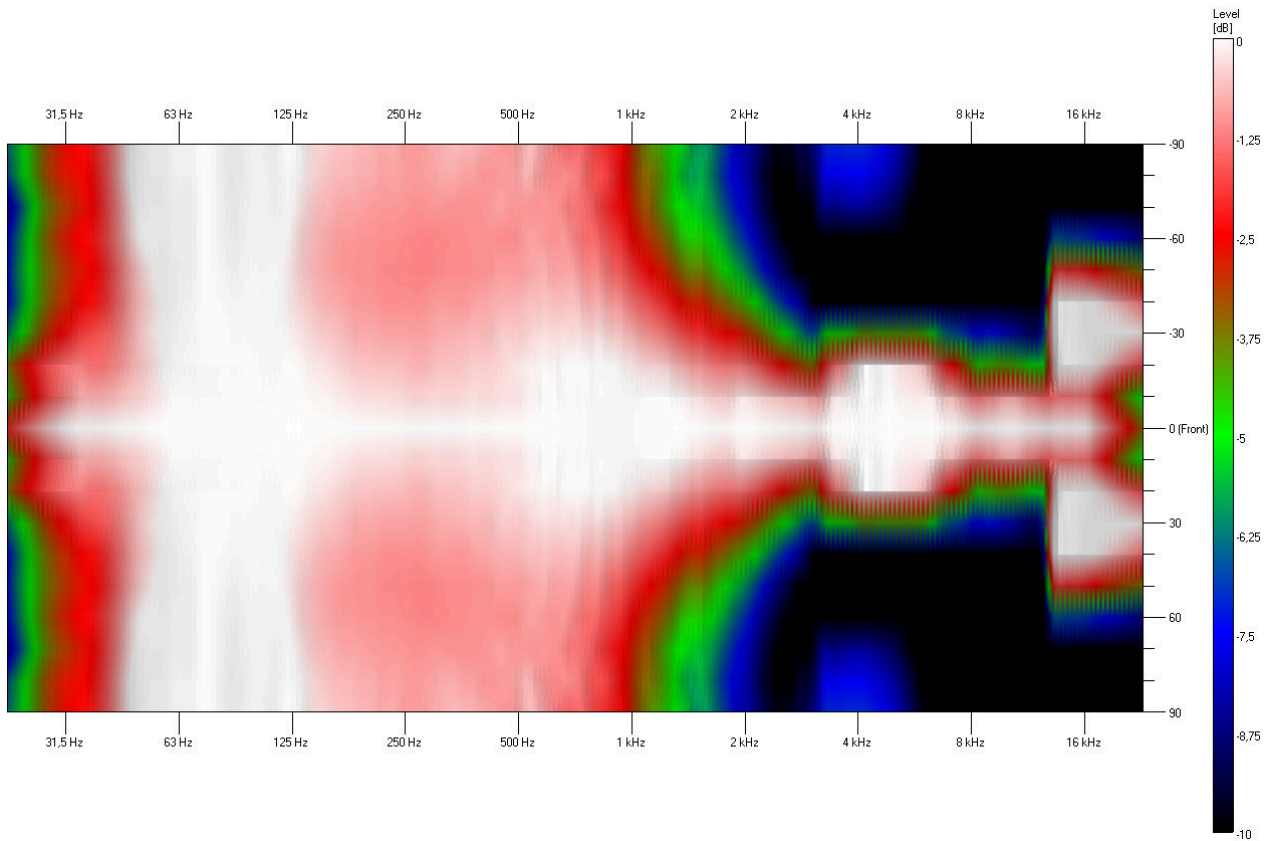
Sensitivity



SPL Max

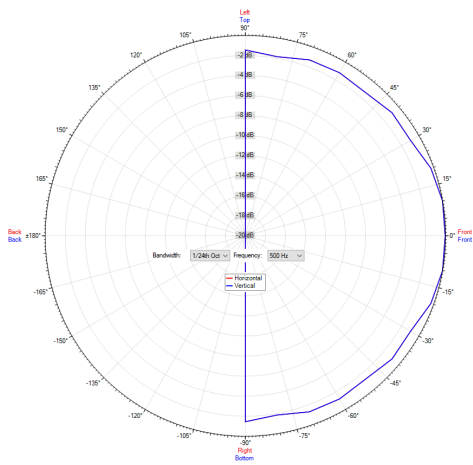


Isobar

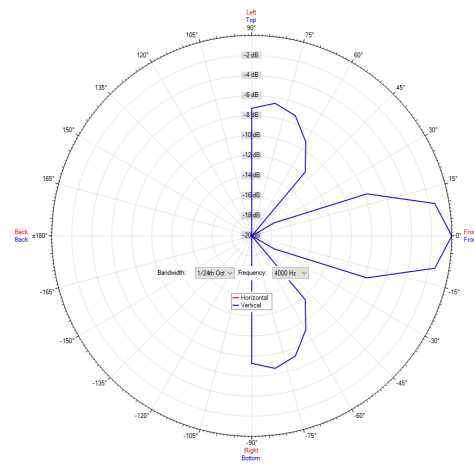


Polar Diagram

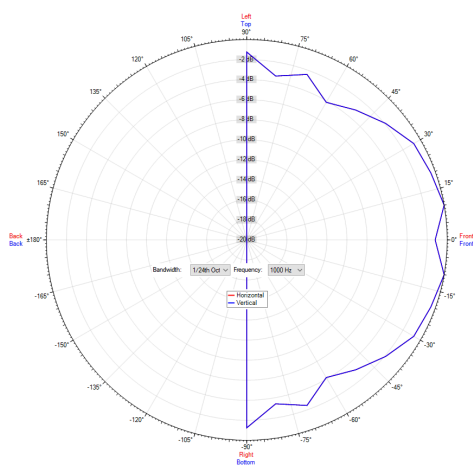
Polar Diagram 500Hz



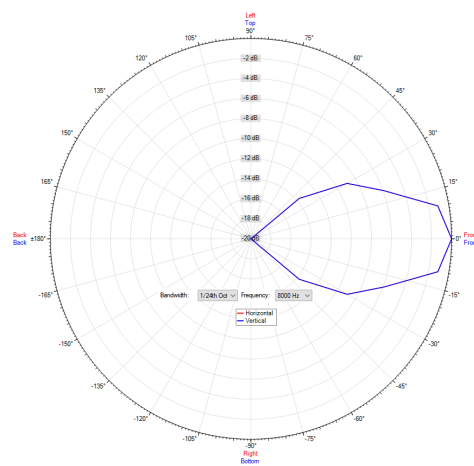
Polar Diagram 4000Hz



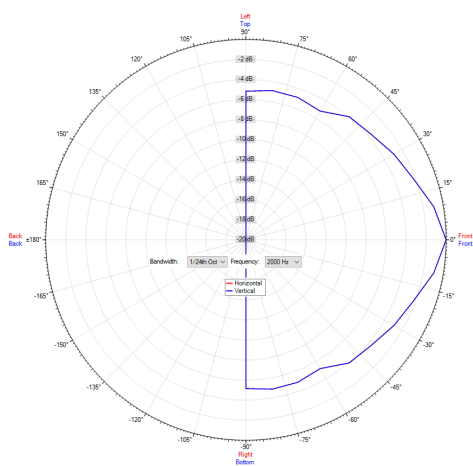
Polar Diagram 1000Hz



Polar Diagram 8000Hz



Polar Diagram 2000Hz



ic audio loudspeakers are tested and classified according to the IEC standard 60529 (degree of protection by enclosure) against the penetration of foreign objects and moisture. The classification is conforming to standards through characterization with a fixed code. This code consists of the letters IP (International Protection) followed by two digits. The first digit indicates the degree of protection against dust and the second digit the degree of protection against water. Please note that the testing of the products has been carried out in laboratory conditions which are not always 100% comparable with the conditions of different installation environments. This protection can be reduced due to normal wear and tear depending on the installation environment.

RoHS compliant (2011/65/EU)

The IP rating specified is based on ic audio test results, not on CNBOP-PIB test results. Certification only verifies the minimum requirements for EN54-24 compliance.



Artikel Nr. : 20194132

Packing Unit: 8

