

DL-SE 10-165/T-EN54



- frameless design
- also suitable for very thin ceilings
- WAGO connector 221



EN 54-24:2008
Ref. Nr.: 002-18
ID-Code: SAA-1802
1438-CPR-0642

19

ic audio GmbH, Boehringerstraße 14a,
D-68307 Mannheim, Germany

CE-Symbol gemäß Richtlinie 93/68EWG

Contemporary LED lights inspire the frameless design of this ceiling speaker and already has the makings of a classic. The 10W powered speaker is equipped with a 165mm full-range loudspeaker and a 100V transformer with 3 power adjustments. The powder-coated metal housing in RAL 9016 guarantees long-term stability. For additional reliability, the speaker is impregnated against wetness.

The speaker is also secured with protection class IP 21C against the security risks of environmental influences. Fast and easy installation through WAGO 221 connector and strong spring clamps with protective caps for vibration damping. Alternatively, the loudspeaker can also be mounted using a threaded rod. The connecting cables can be supplied through rubber grommets in the fire dome.

Special paint of the speaker in 4-digit RAL or NCS colour is available at extra cost. The fire dome is included in the delivery.

This speaker is suitable for a ceiling strength of approx. 1-45 mm. Our specification is primarily related to solid ceilings. An increase in the ceiling depth could be necessary for ceilings with softer materials. Stronger cables and other fittings may also result in changes to the general setup. With regard to the variety of materials and manufacturers, we recommend installing a speaker sample in the ceiling first to define the exact requirements.

Product	DL-SE10-165/T-EN54
Artikel Nr.	20194233

Acoustics

Power	10/5/2,5W
Impedance (100V)	1000/2000/4000 ohm
Speaker \varnothing	165 mm
Frequency Range	63 - 16.000 Hz
Frequency Response	56 - 18.000 Hz
SPL 1W/1m, peak	97,0 dB
SPL 1W/4m, peak	85,0 dB
SPL Pmax/4m, peak	94,2 dB
SPL IEC268-5, 1W/1m	92,0 dB
Sensitivity EN54-24, 1W/4m	81,4 dB
Dispersion -6dB, 500Hz	180°
Dispersion -6dB, 1KHz	175°
Dispersion -6dB, 2KHz	150°
Dispersion -6dB, 4KHz	94°

Connections and Housing

Connector	WAGO 221 connector
Terminal Diameter	2,3 mm
Maximum Cable Passage	4 mm ²
Temperature Range	-10 / +55 C°
Type A/B	A
Dimensions	220x104 mm
Ceiling Cut-out	188 mm
Weight (net)	1,1 kg
Housing	metal
Colour	RAL 9016
Mounting	spring clamp
IP Rating	IP21

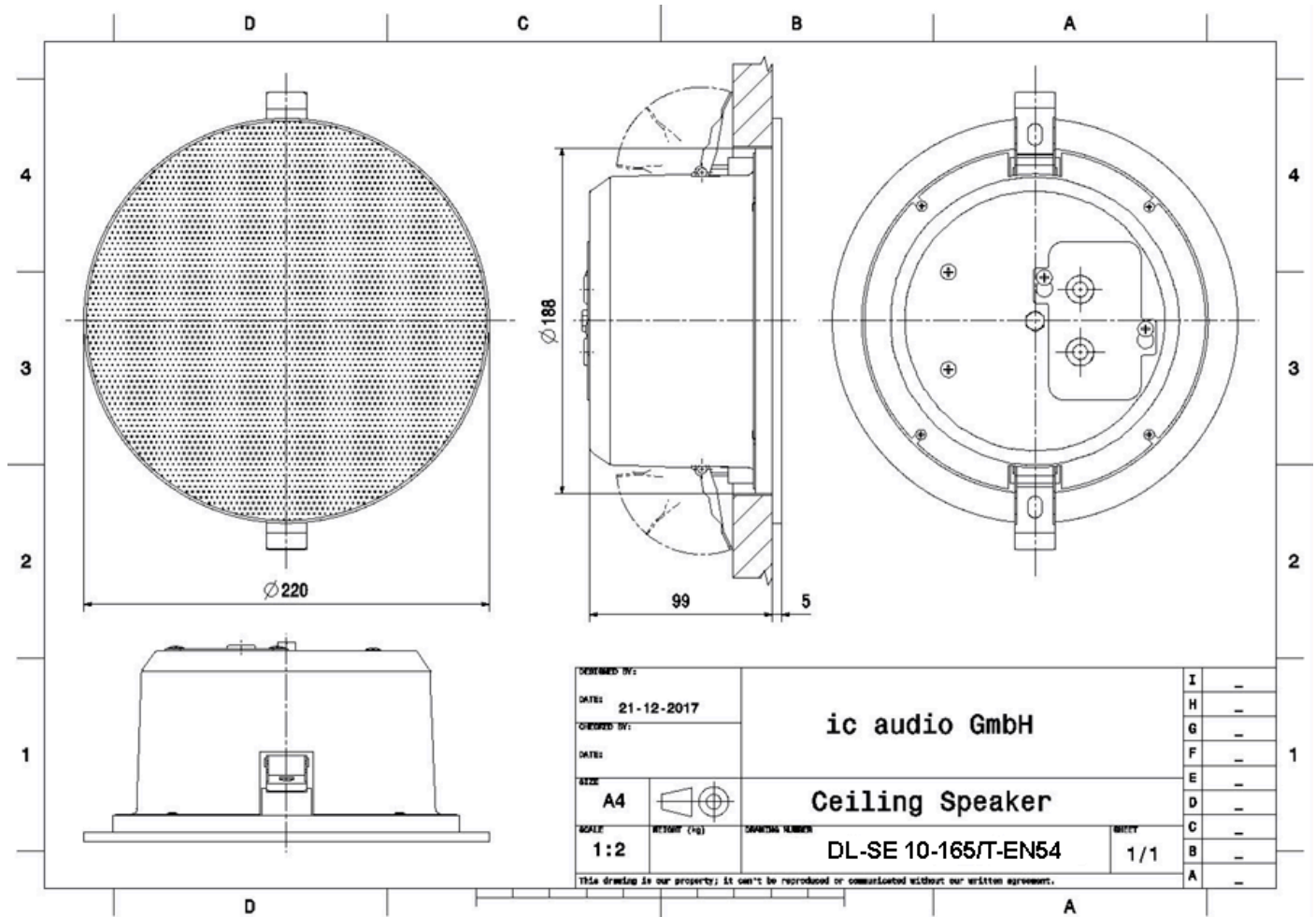
Certification

Ref. Nr.	002-18
ID-Code	SAA-1802
Certificate Number	1438-CPR-0642

Product Attributes

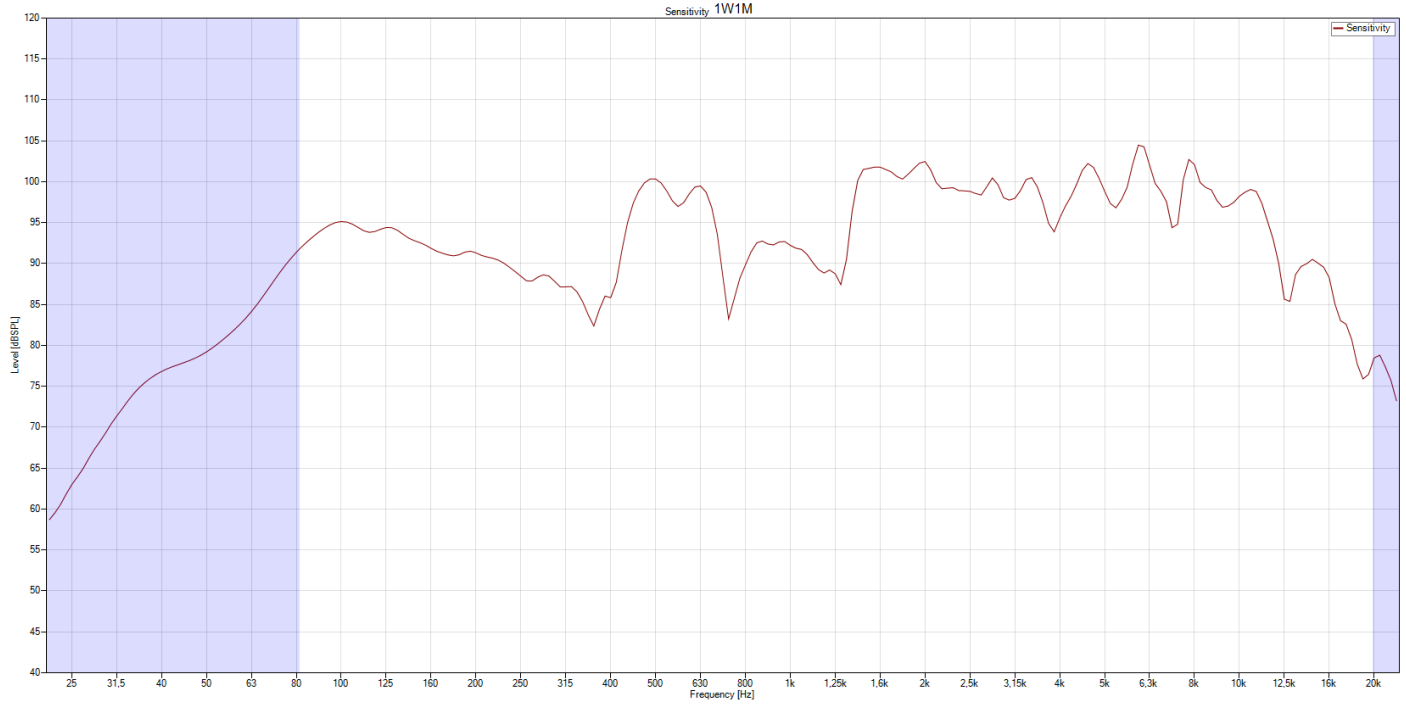


Technical Drawing

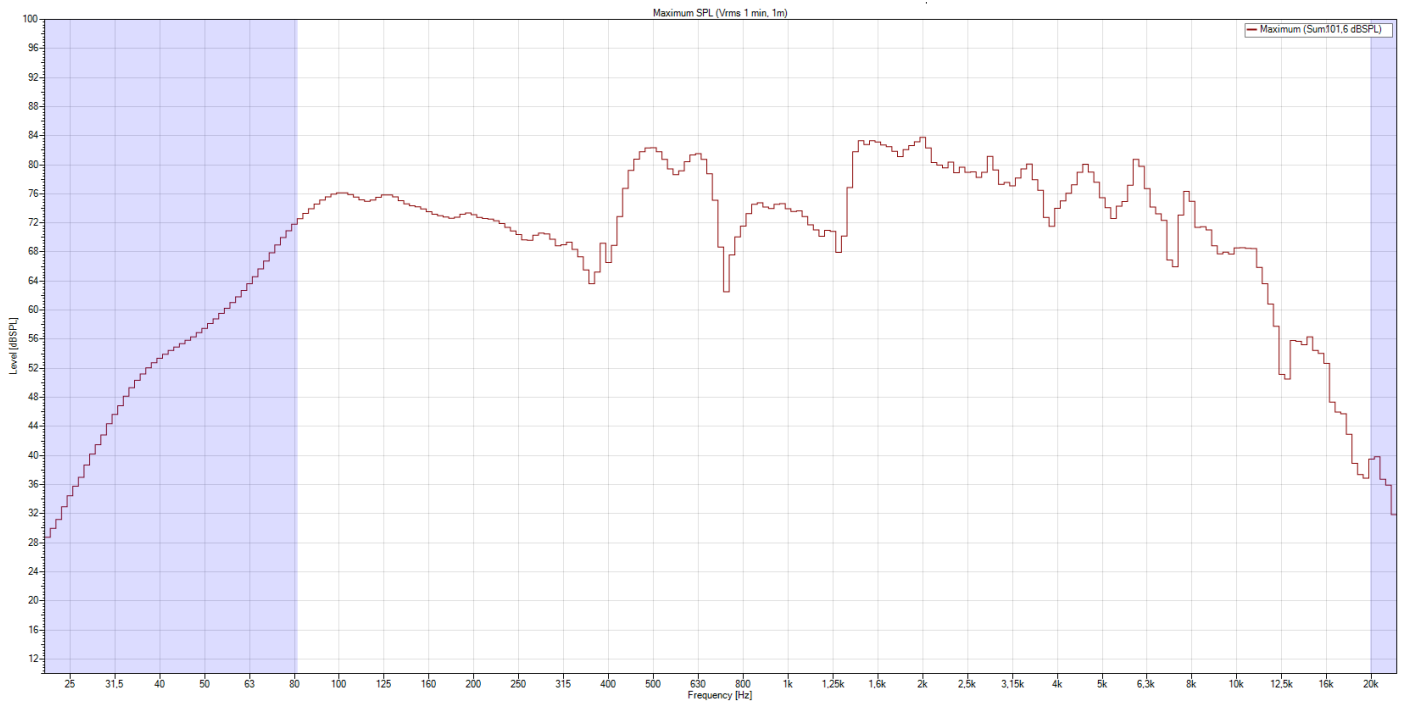


Frequency Response Diagram

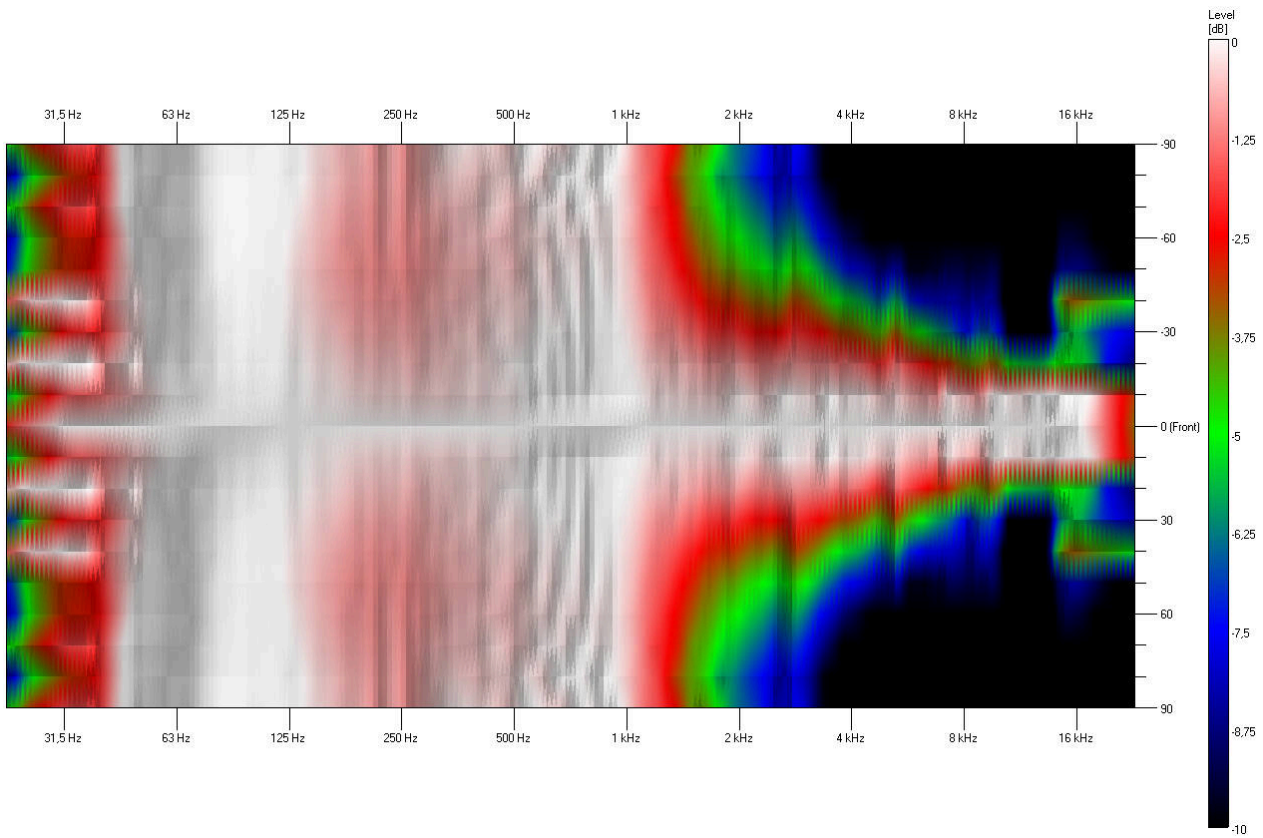
Sensitivity



SPL Max

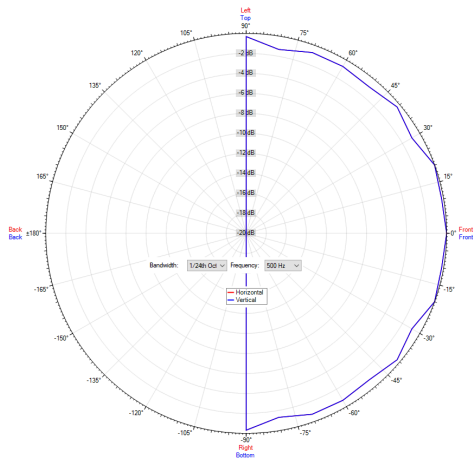


Isobar

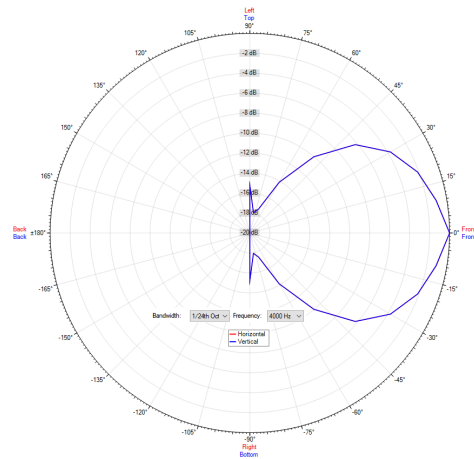


Polar Diagram

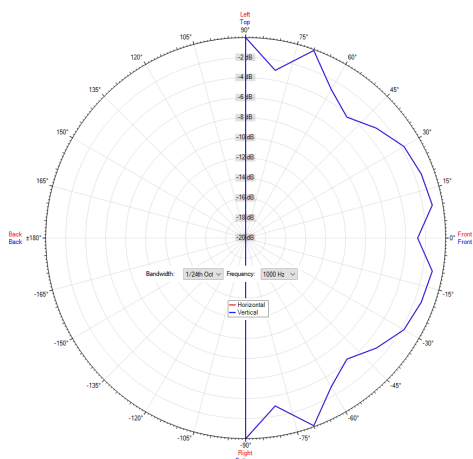
Polar Diagram 500Hz



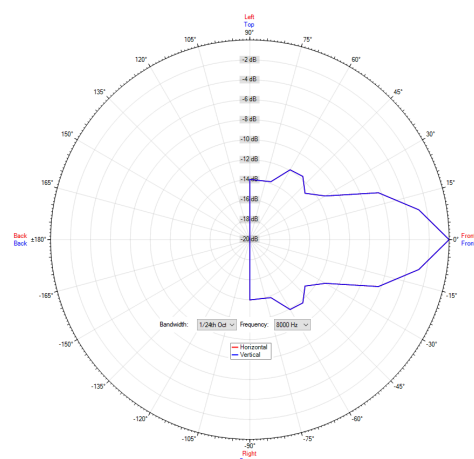
Polar Diagram 4000Hz



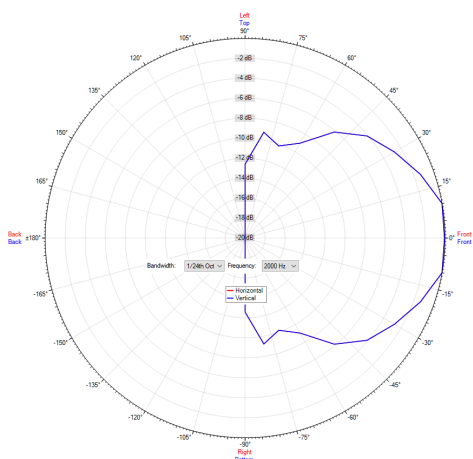
Polar Diagram 1000Hz



Polar Diagram 8000Hz



Polar Diagram 2000Hz



ic audio loudspeakers are tested and classified according to the IEC standard 60529 (degree of protection by enclosure) against the penetration of foreign objects and moisture. The classification is conforming to standards through characterization with a fixed code. This code consists of the letters IP (International Protection) followed by two digits. The first digit indicates the degree of protection against dust and the second digit the degree of protection against water. Please note that the testing of the products has been carried out in laboratory conditions which are not always 100% comparable with the conditions of different installation environments. This protection can be reduced due to normal wear and tear depending on the installation environment.

RoHS compliant (2011/65/EU)

The IP rating specified is based on ic audio test results, not on CNBOP-PIB test results. Certification only verifies the minimum requirements for EN54-24 compliance.



Artikel Nr. : 20194233

Packing Unit: 8

