

WA-S 06-165/T-EN54



- high sound pressure level
- slim-line design
- flexible mounting



EN 54-24:2008

:

:

1438-CPR-0984

ic audio GmbH, Boehringerstraße 14a,
D-68307 Mannheim, Germany

CE-Symbol gemäß Richtlinie 93/68EWG

A uniquely designed ultra-slim wall speaker for limited space and unobtrusive installations. The WA-S 06-165/T-EN54 delivers excellent sound quality with an outstanding look.

The 6W full range 165mm speaker convinces through high-quality design and resilience. The impact-resistant, UV-resistant, ABS plastic housing in RAL 9016 assures enduring stability. It features a magnetically attached grille – discreet and easy maintenance.

Fast and easy installation through the WAGO connector.

The speaker is protected against the risks of environmental influences with protection class IP 21. It is also impregnated against moisture.

Thanks to its flexible mounting positions, 3 orientations are possible:

1. Horizontal alignment on the wall
2. Horizontal alignment between two walls and the ceiling
3. Corner mount

Product	WA-S 06-165/T-EN54
Artikel Nr.	20238096

Acoustics

Power	6/3 /1.5 W
Impedance (100V)	1667/3333 /6667 ohm
Speaker ø	165 mm
Frequency Range	210 - 21.800 Hz
Frequency Response	184 - 23.300 Hz
SPL 1W/1m, peak	99,4 dB
SPL 1W/4m, peak	87,4 dB
SPL Pmax/4m, peak	95,8 dB
SPL IEC268-5, 1W/1m	92,7 dB
SPL IEC268-5, Pmax/1m	98,9 dB
Sensitivity EN54-24, 1W/1m	91,0 dB
Sensitivity EN54-24, 1W/4m	79,0 dB
Dispersion -6dB, 500Hz	180° 180°
Dispersion -6dB, 1KHz	160° 160°
Dispersion -6dB, 2KHz	125° 125°
Dispersion -6dB, 4KHz	89° 89°

Connections and Housing

Connector	WAGO 221 connector
Terminal Diameter	2,3 mm
Maximum Cable Passage	4 mm ²
Temperature Range	-10 / +55 C°
Type A/B	A
Dimensions	252x182x70 mm
Weight (net)	0,8 kg
Housing	ABS
Colour	RAL 9016
Mounting	screws
IP Rating	IP21

Certification

Certificate Number	1438-CPR-0984
--------------------	---------------

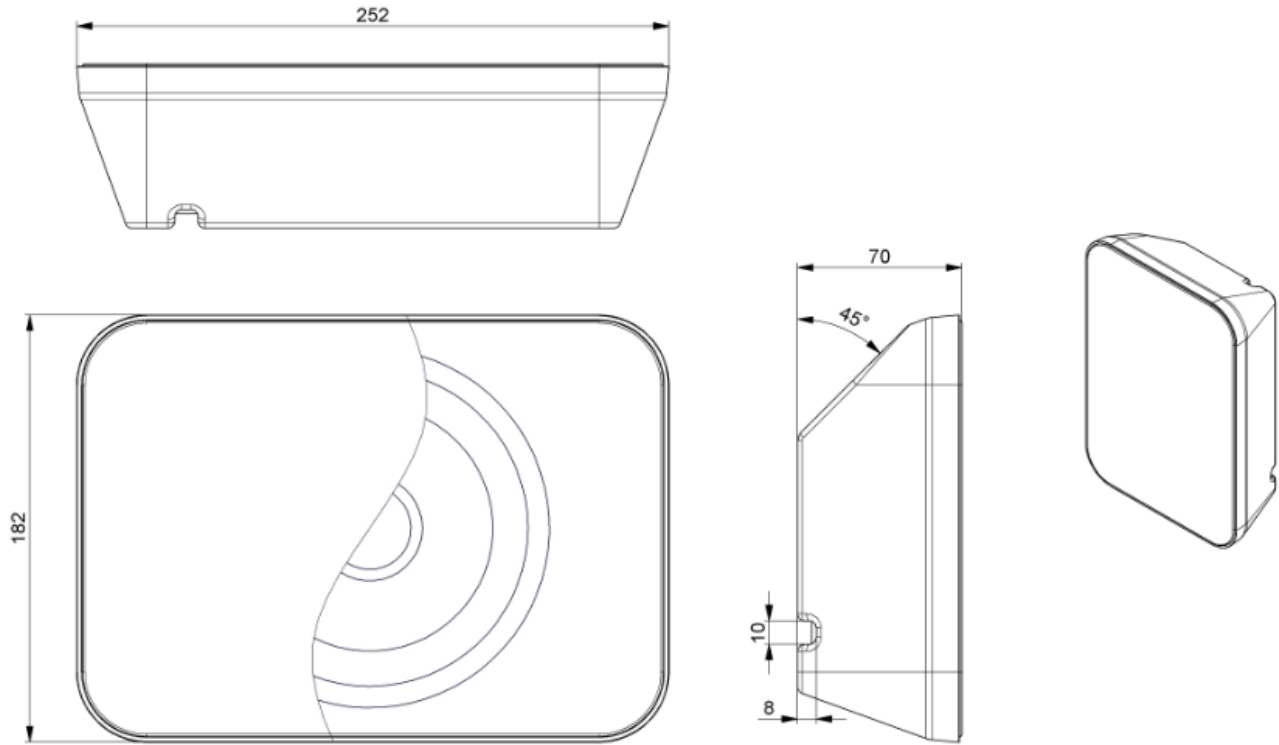
Product Attributes



Technical Drawing

ic audio

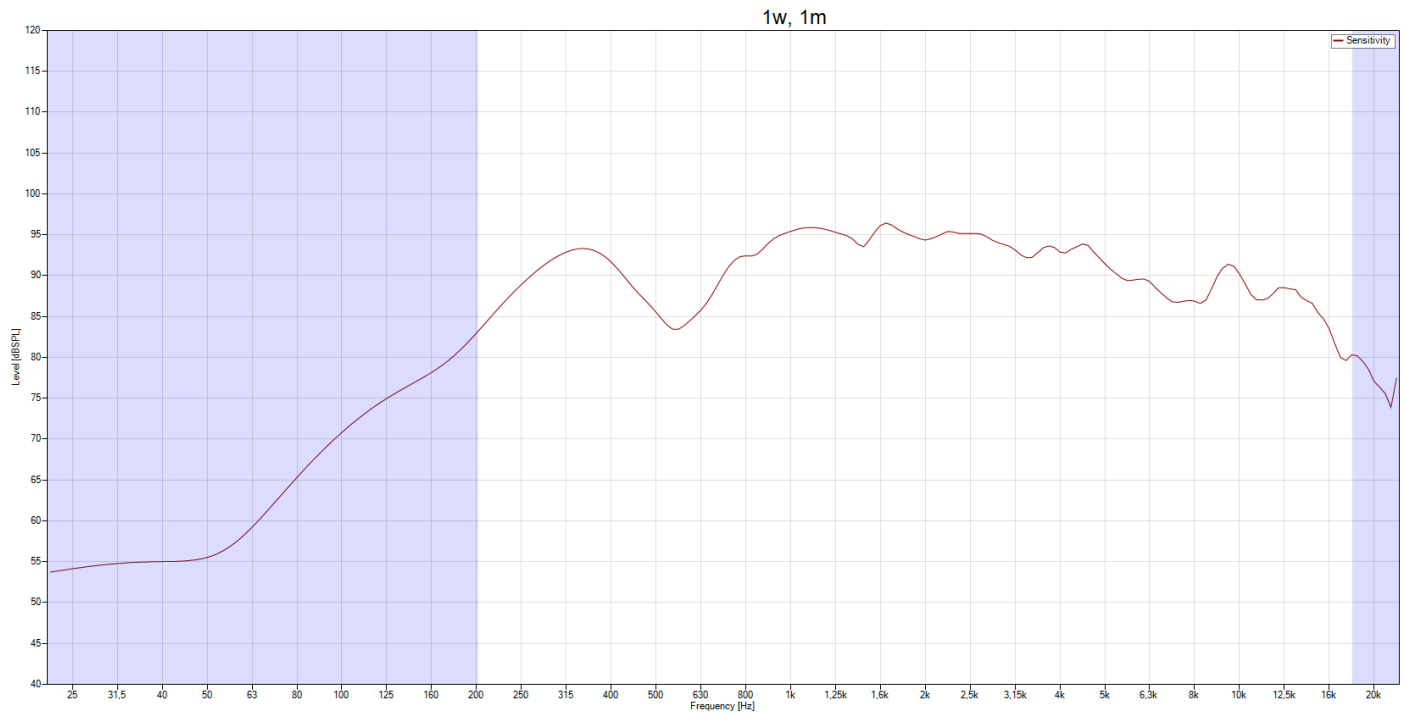
WA-S 06-165/T-EN54



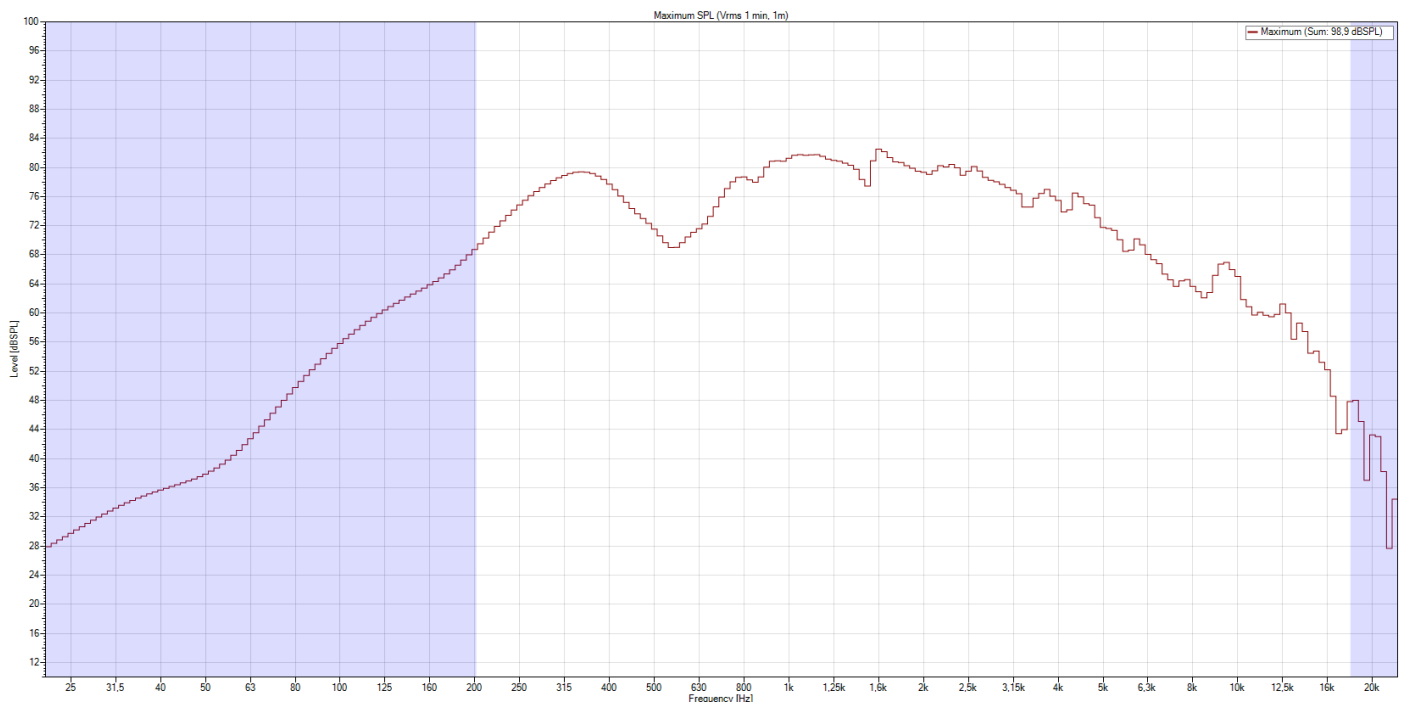
all dimensions are in mm

Frequency Response Diagram

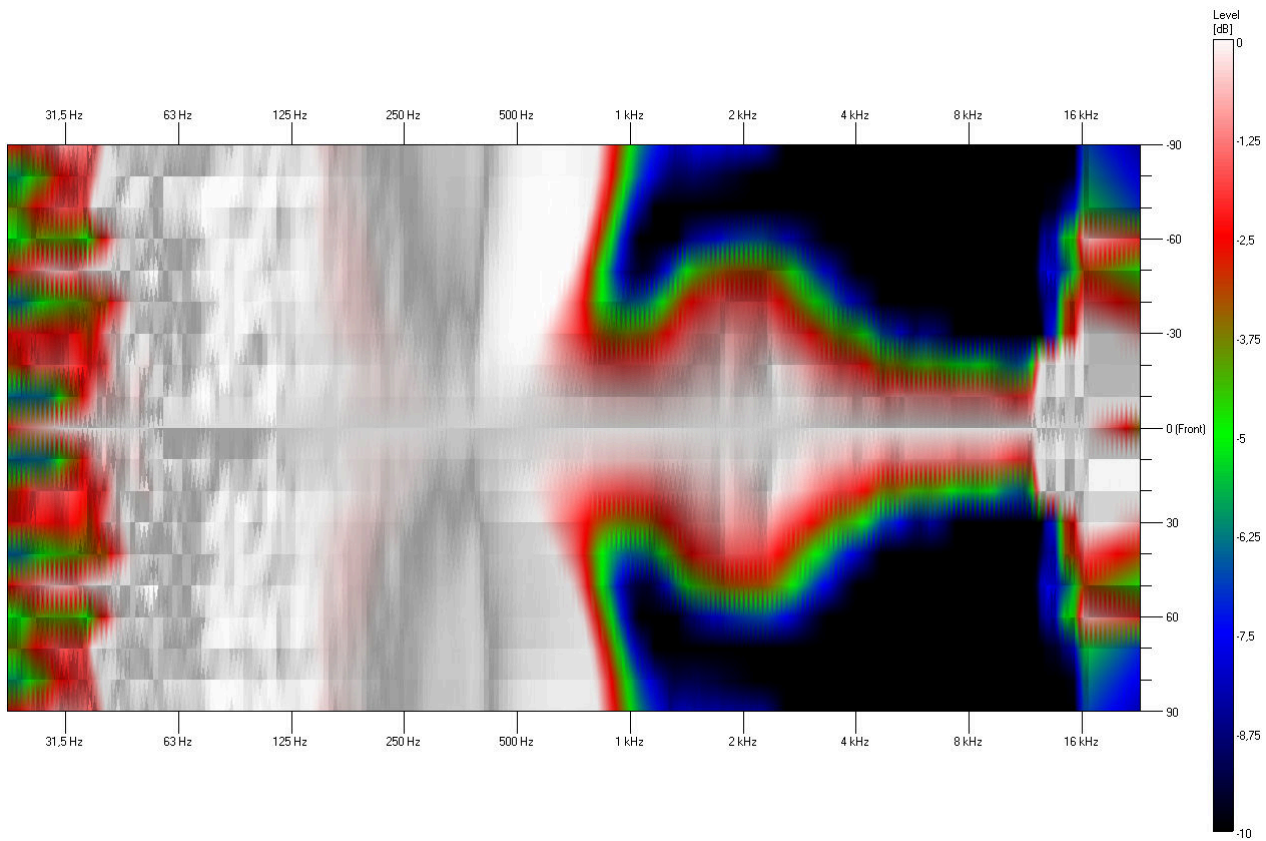
Sensitivity



SPL Max

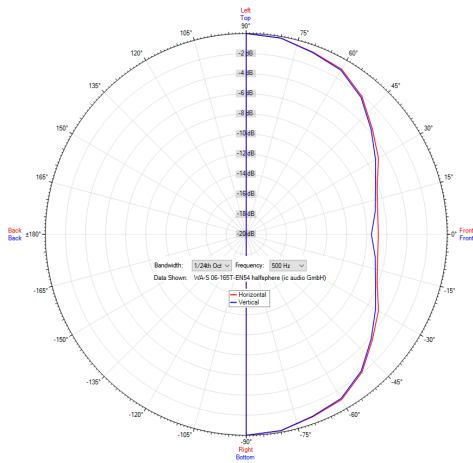


Isobar

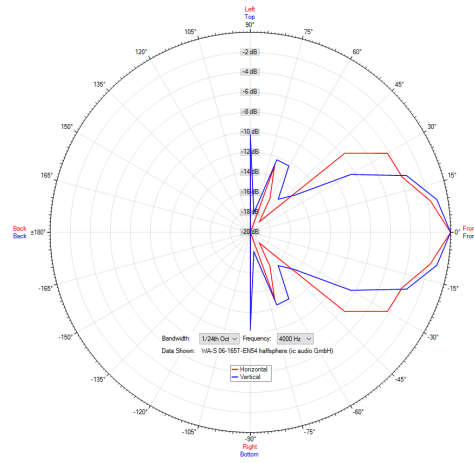


Polar Diagram

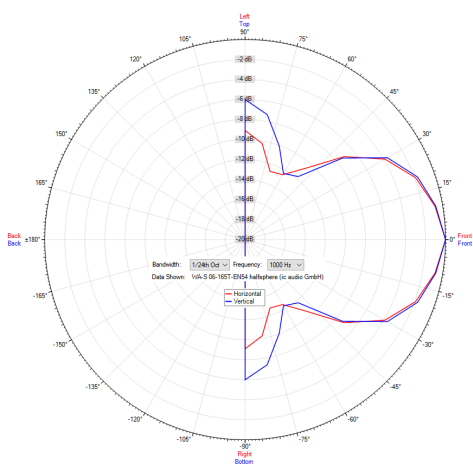
Polar Diagram 500Hz



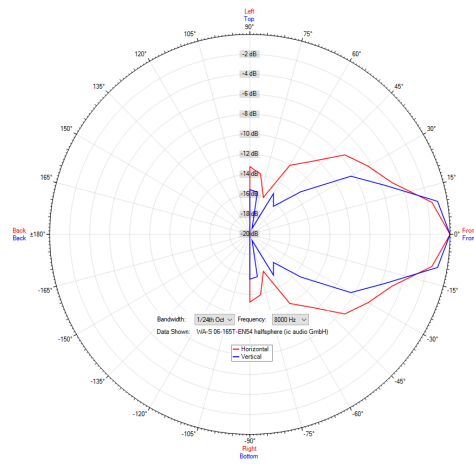
Polar Diagram 4000Hz



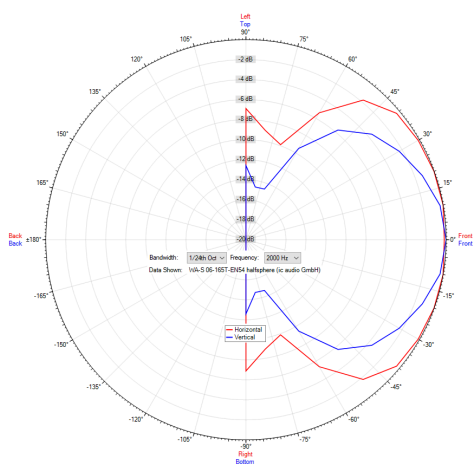
Polar Diagram 1000Hz



Polar Diagram 8000Hz



Polar Diagram 2000Hz



ic audio loudspeakers are tested and classified according to the IEC standard 60529 (degree of protection by enclosure) against the penetration of foreign objects and moisture. The classification is conforming to standards through characterization with a fixed code. This code consists of the letters IP (International Protection) followed by two digits. The first digit indicates the degree of protection against dust and the second digit the degree of protection against water. Please note that the testing of the products has been carried out in laboratory conditions which are not always 100% comparable with the conditions of different installation environments. This protection can be reduced due to normal wear and tear depending on the installation environment.

RoHS compliant (2011/65/EU)

The IP rating specified is based on ic audio test results, not on CNBOP-PIB test results. Certification only verifies the minimum requirements for EN54-24 compliance.



Artikel Nr. : 20238096

Packing Unit: 12

