



## DL-A 10-200/T-EN54

- unobtrusive installation
- vandal-proof
- BS 5839



EN 54-24:2008  
Ref. Nr.: 004-13  
ID-Code: SAA-LS04  
1438-CPR-0232

ic audio GmbH, Boehringerstraße 14a,  
D-68307 Mannheim, Germany

CE-Symbol gemäß Richtlinie 93/68EWG

The 10W powered speaker is equipped with a 200mm full-range loudspeaker chassis and a 100V transformer with 4 power adjustments. The powder-coated metal version with a perforated grid cover in RAL 9010 guarantees lasting stability. For additional reliability, a 2-pin ceramic block and a thermal fuse are provided, and the speaker chassis is impregnated against wetness.

Flat and elegant design for inconspicuous installation that does not require a disturbing "collar" thanks to a metal back panel.

The speaker is also secured with protection class IP 21C against the security risks of environmental influences.

The speaker is also compliant with the British Standard BS 5839, Part 8.

Quick and easy mounting by fixing screws to the metal back plate.

Custom finish of the speaker in 4-digit RAL- or NCS- colour is available at extra cost.

Product	DL-A 10-200/T-EN54
Artikel Nr.	20102196

### Acoustics

Power	10/6/3/1,5 W
Impedance (100V)	1000/1667/3333/6667 ohm
Speaker $\varnothing$	200 mm
Frequency Range	275 - 19.100 Hz
Frequency Response	200 - 24.000 Hz
SPL 1W/1m, peak	101,6 dB
SPL 1W/4m, peak	89,6 dB
SPL Pmax/4m, peak	99,6 dB
SPL IEC268-5, 1W/1m	95,0 dB
SPL IEC268-5, Pmax/1m	105,0 dB
Sensitivity EN54-24, 1W/1m	95,0 dB
Sensitivity EN54-24, 1W/4m	83,0 dB
Dispersion -6dB, 500Hz	h/v 180°
Dispersion -6dB, 1KHz	h/v 170°
Dispersion -6dB, 2KHz	h/v 90°
Dispersion -6dB, 4KHz	h/v 50°

## Connections and Housing

Connector	2-pin ceramic block
Terminal Diameter	3,2 mm
Maximum Cable Passage	8 mm <sup>2</sup>
Temperature Range	-10 / +55 C°
Type A/B	A
Dimensions	210x80 mm
Weight (net)	1,69 kg
Housing	metal
Colour	RAL 9010
Mounting	Screws
IP Rating	IP21

## Certification

Ref. Nr.	004-13
ID-Code	SAA-LS04
Certificate Number	1438-CPR-0232

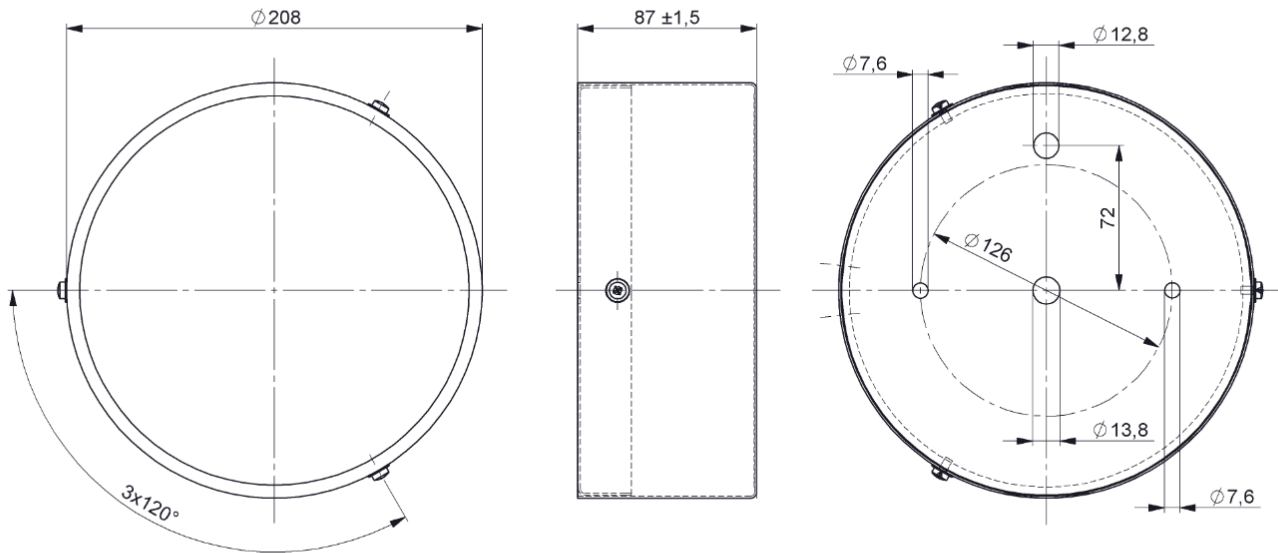
## Product Attributes



Technical Drawing



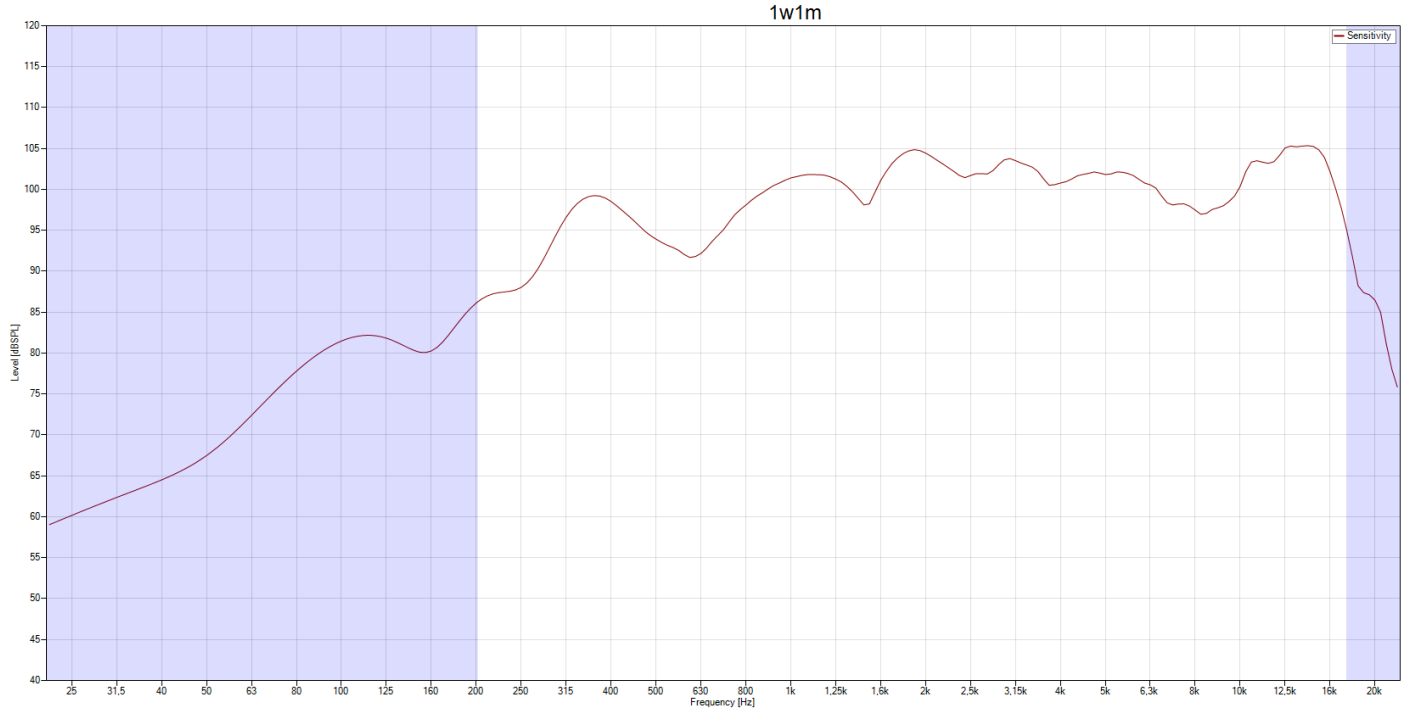
DL-A 10-200/T-EN54



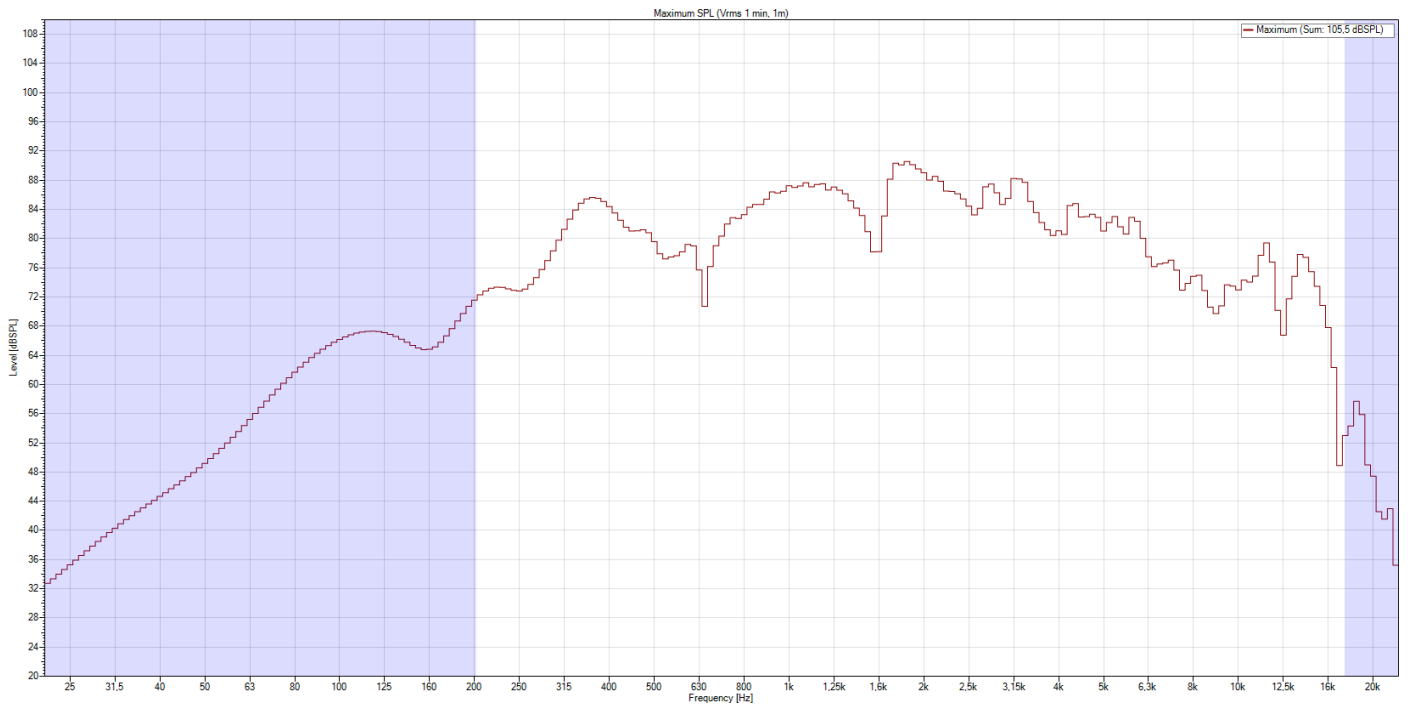
all dimensions are in mm

## Frequency Response Diagram

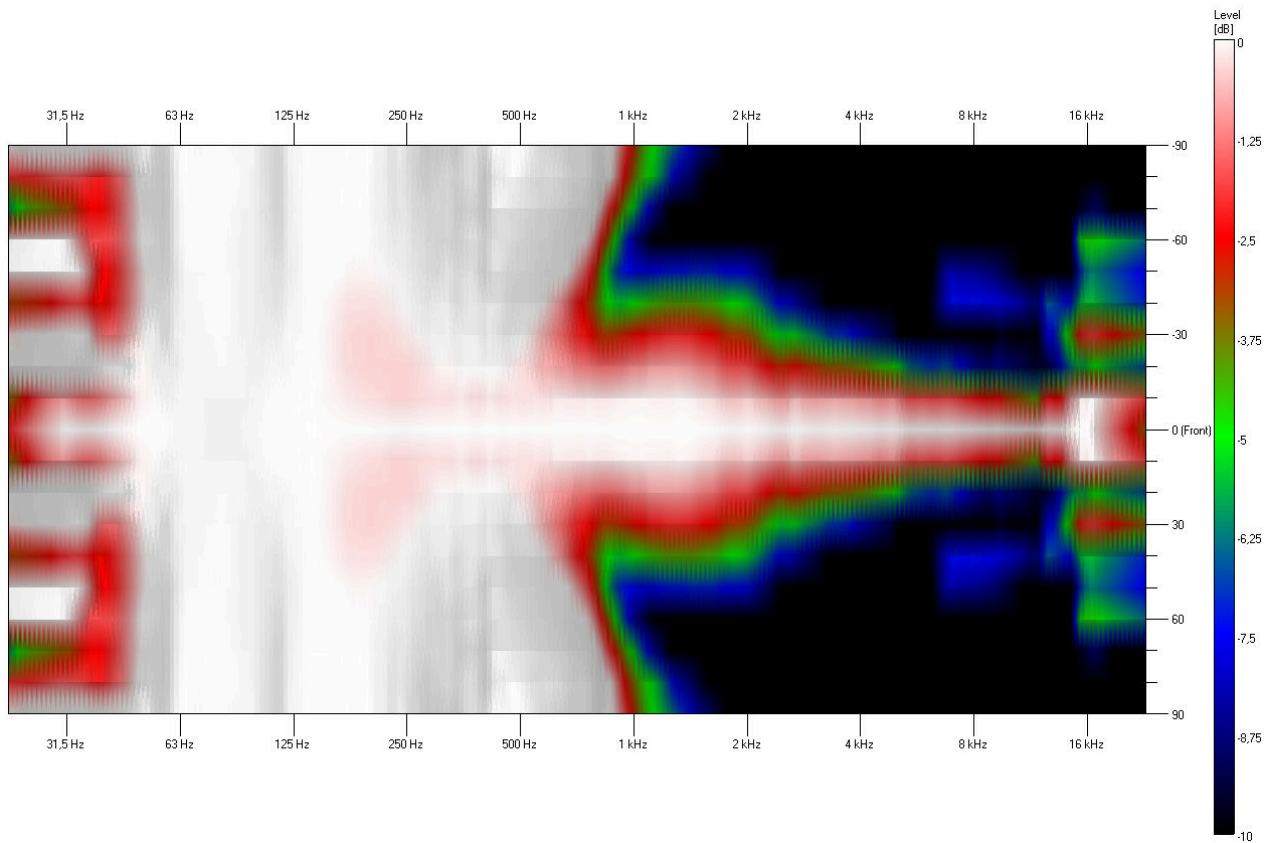
### Sensitivity



### SPL Max

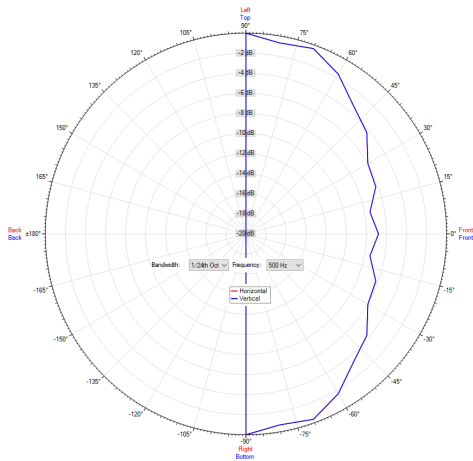


Isobar

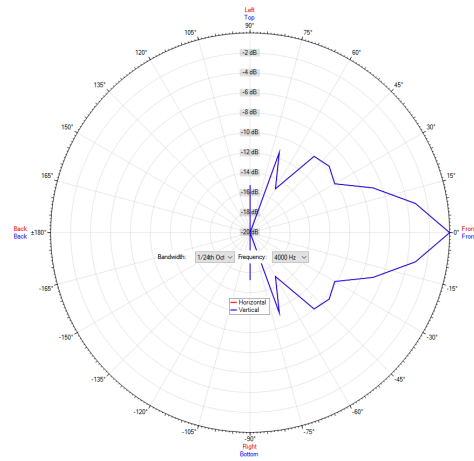


## Polar Diagram

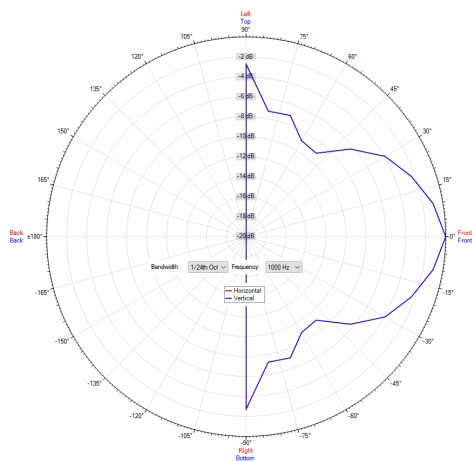
Polar Diagram 500Hz



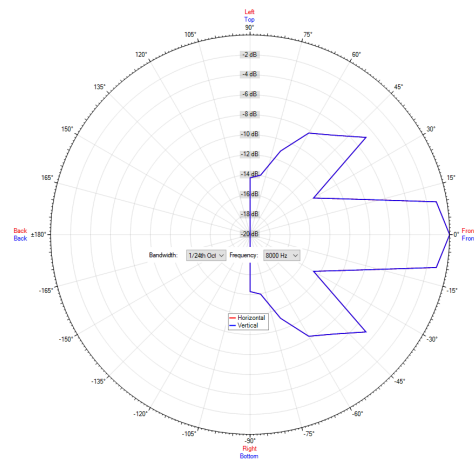
Polar Diagram 4000Hz



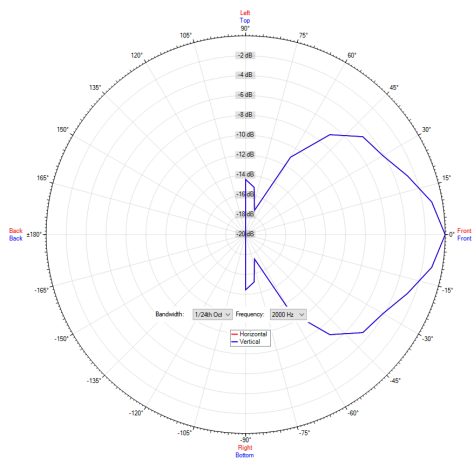
Polar Diagram 1000Hz



Polar Diagram 8000Hz



Polar Diagram 2000Hz



ic audio loudspeakers are tested and classified according to the IEC standard 60529 (degree of protection by enclosure) against the penetration of foreign objects and moisture. The classification is conforming to standards through characterization with a fixed code. This code consists of the letters IP (International Protection) followed by two digits. The first digit indicates the degree of protection against dust and the second digit the degree of protection against water. Please note that the testing of the products has been carried out in laboratory conditions which are not always 100% comparable with the conditions of different installation environments. This protection can be reduced due to normal wear and tear depending on the installation environment.

RoHS compliant (2011/65/EU)

The IP rating specified is based on ic audio test results, not on CNBOP-PIB test results. Certification only verifies the minimum requirements for EN54-24 compliance.



Artikel Nr. : 20102196

Packing Unit: 8

