



DL-A-AB 06-100/T-EN54

- Quick mounting
- Highest reliability
- BS 5839



EN 54-24:2008
Ref. Nr.: 004-15
ID-Code: SAA-LS04
1438-CPR-0448

ic audio GmbH, Boehringerstraße 14a,
D-68307 Mannheim, Germany

CE-Symbol gemäß Richtlinie 93/68EWG

The DL-A-AB 06-100/T-EN54 is a surface-mounted ceiling speaker designed with two independent speakers and 100V transformers to enable the economic operation of two separate speaker lines (A/B lines) for the highest security demands. In case of a failure of one speaker line, the redundancy of the chassis and the transformers will guarantee unimpaired function. The speaker is compliant with the British Standard BS 5839, Part 8.

The 2x6W powered speaker is equipped with two full-range loudspeakers and two 100V transformers with 3 power adjustments each. The surface-mounted loudspeaker for voice alarms, made of powder-coated metal in RAL 9010, impresses with its flat and elegant design for inconspicuous installations.

Equipped with ceramic clamps and thermal fuses, and impregnated against wetness. Easy installation with the included rear metal plate, fixed by screws on the ceiling.

Product	DL-A-AB 06-100/T-EN54
Artikel Nr.	20142910

Acoustics

Power	2x6/3/1,5 W
Impedance (100V)	2 x 1667/3333/6667 ohm
Speaker ø	100 mm
Frequency Range	182 - 17.400 Hz (single) 279 - 17.600 Hz (double)
Frequency Response	192 - 23.500 Hz (single) 197 - 23.500 Hz (double)
SPL 1W/1m, peak	97,6 dB (single) 102,9 dB (double)
SPL 1W/4m, peak	85,6 dB (single) 90,9 dB (double)
SPL Pmax/4m, peak	93,3 dB (single) 98,6 dB (double)
SPL IEC268-5, 1W/1m	90,0 dB (single) 92,0 dB (double)
SPL IEC268-5, Pmax/1m	97,8 dB (single) 99,8 dB (double)
Sensitivity EN54-24, 1W/1m	90,0 dB (single) 92,0 dB (double)
Sensitivity EN54-24, 1W/4m	78,0 dB (single) 80,0 dB (double)
Dispersion -6dB, 500Hz	180°h/v (s/d)
Dispersion -6dB, 1KHz	170° h/v (single) 160° h/v (double)
Dispersion -6dB, 2KHz	132°/124° h/v (single) 72°/122° h/v (double)
Dispersion -6dB, 4KHz	130°/103° h/v (single) 37°/86° h/v (double)

Connections and Housing

Connector	2-pin ceramic block
Temperature Range	-10 / +55 °C
Dimensions	208 x 89 mm
Weight (net)	1,90 kg
Housing	metal
Colour	RAL 9010
Mounting	Screws
IP Rating	IP21

Certification

Ref. Nr.	004-15
ID-Code	SAA-LS04
Certificate Number	1438-CPR-0448

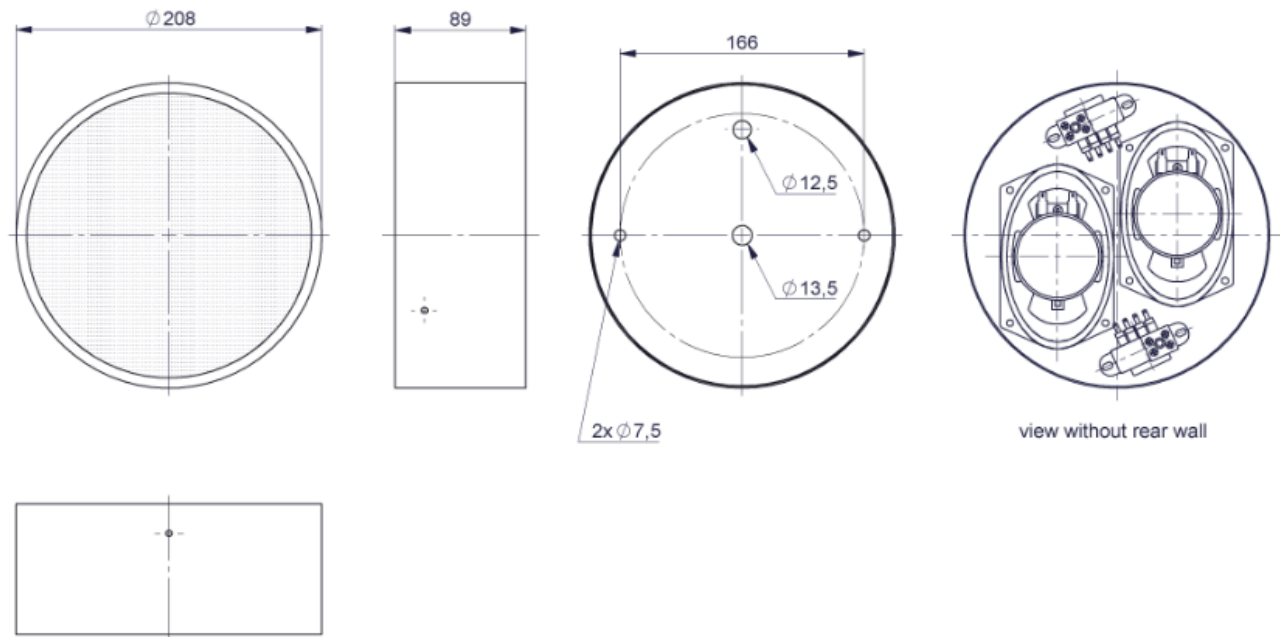
Product Attributes



Technical Drawing



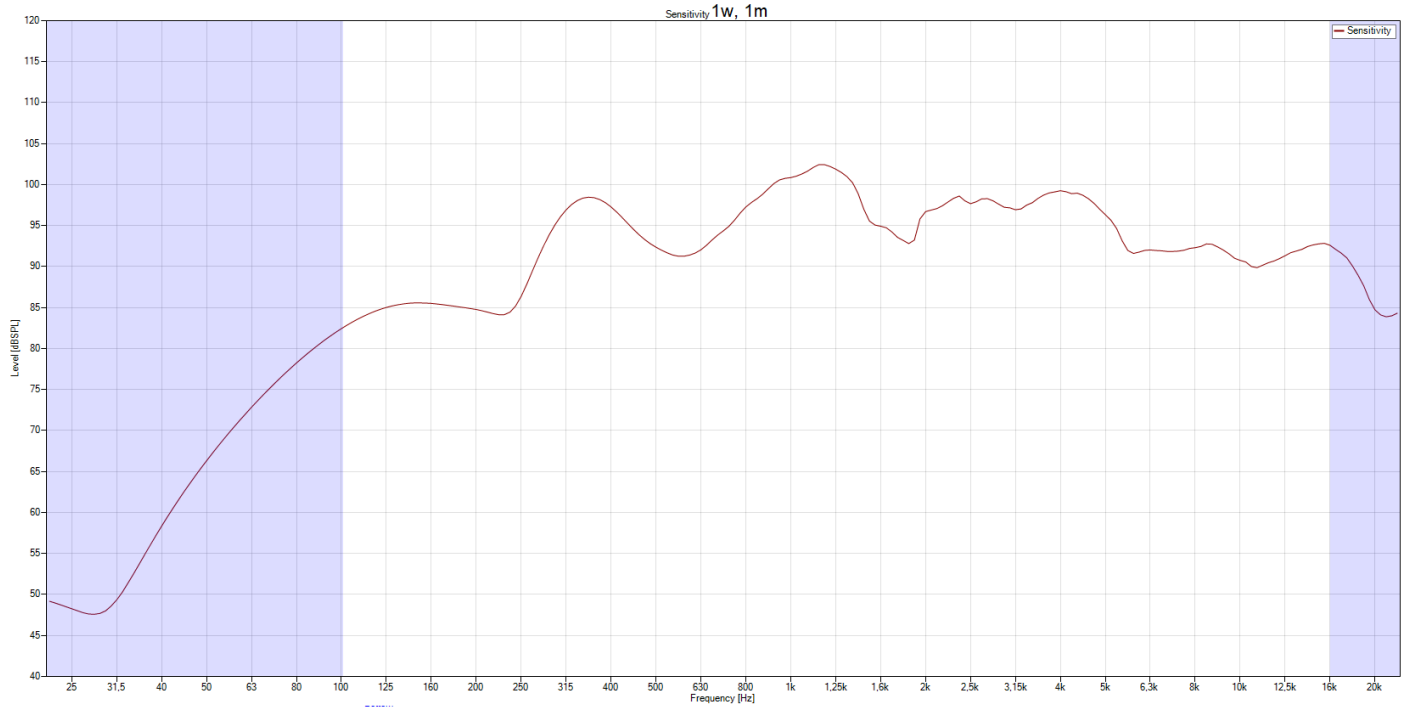
DL-A-AB 06-100/T-EN54



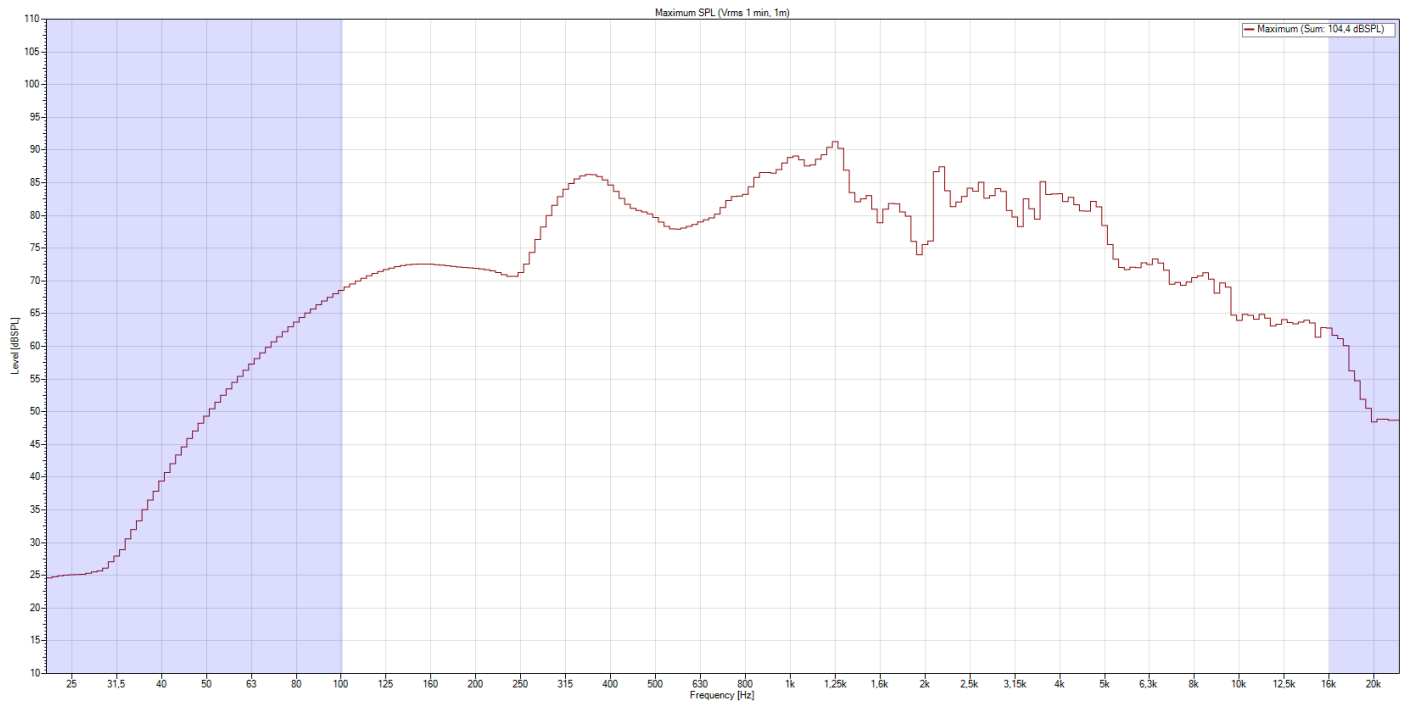
all dimensions are in mm

Frequency Response Diagram

Sensitivity

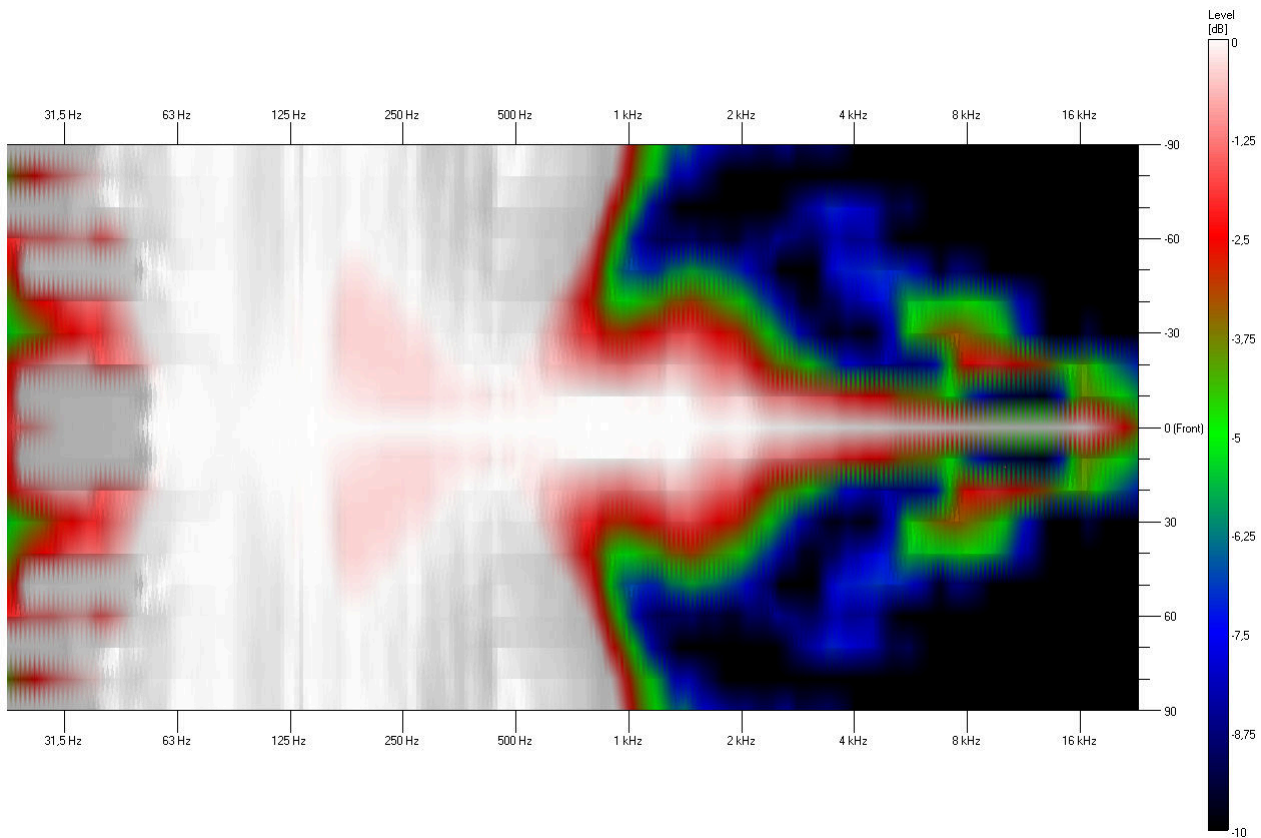


SPL Max

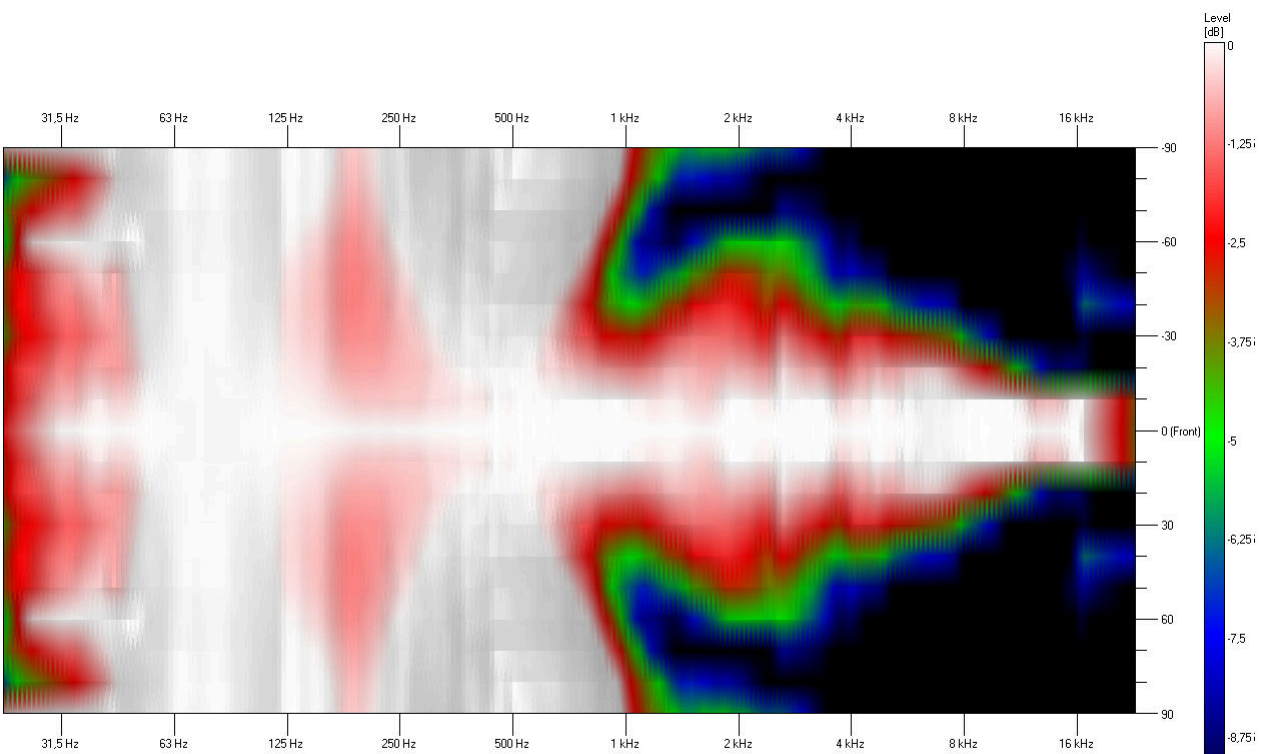


Isobar

Horizontal

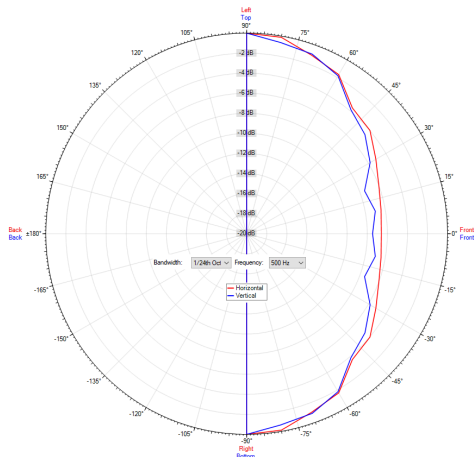


Vertical

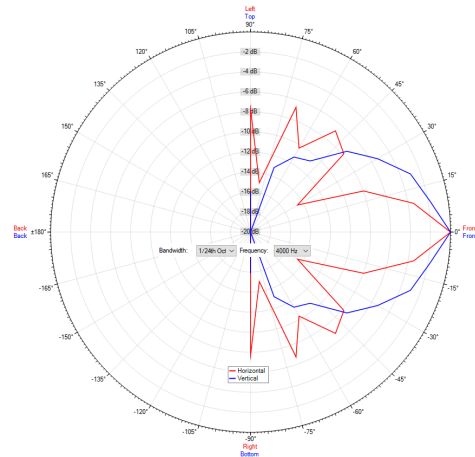


Polar Diagram

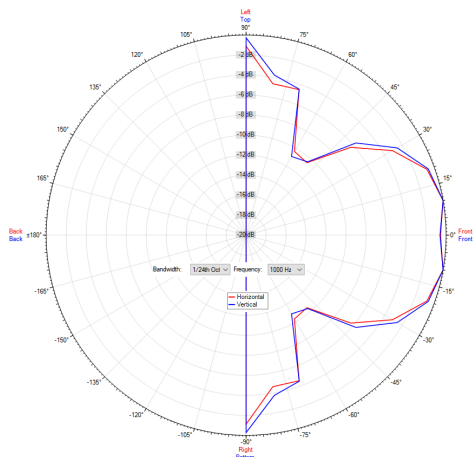
Polar Diagram 500Hz



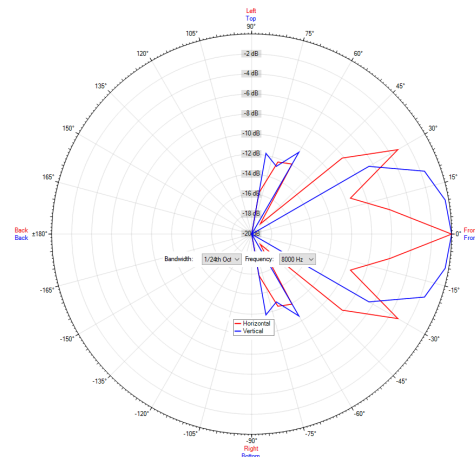
Polar Diagram 4000Hz



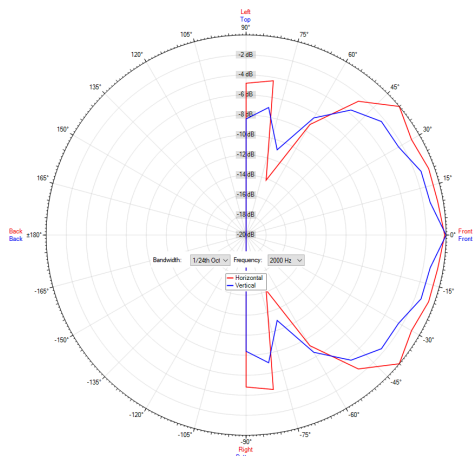
Polar Diagram 1000Hz



Polar Diagram 8000Hz



Polar Diagram 2000Hz



ic audio loudspeakers are tested and classified according to the IEC standard 60529 (degree of protection by enclosure) against the penetration of foreign objects and moisture. The classification is conforming to standards through characterization with a fixed code. This code consists of the letters IP (International Protection) followed by two digits. The first digit indicates the degree of protection against dust and the second digit the degree of protection against water. Please note that the testing of the products has been carried out in laboratory conditions which are not always 100% comparable with the conditions of different installation environments. This protection can be reduced due to normal wear and tear depending on the installation environment.

RoHS compliant (2011/65/EU)

The IP rating specified is based on ic audio test results, not on CNBOP-PIB test results. Certification only verifies the minimum requirements for EN54-24 compliance.



Artikel Nr. : 20142910

Packing Unit: 8

