

DL-S 15-100/T plus white-EN54



- bass-reflex
- shallow installation depth
- magnetic grille



EN 54-24:2008

Ref. Nr.: 024-15

ID-Code: SAA-LS15

1438-CPR-1089

25

ic audio GmbH, Boehringerstraße 14a,
D-68307 Mannheim, Germany

CE-Symbol gemäß Richtlinie 93/68EWG

With a low-profile design, the DL-S voice alarm loudspeaker series, certified EN 54-24, blends seamlessly into any environment.

With a powerful 2-way bass-reflex system and an impressive 15W of power, the DL-S 15 sets new standards for clear and powerful sound. The 100mm woofer of high-quality polypropylene and the precise 25mm tweeter guarantee excellent music reproduction.

The loudspeaker offers a wide dispersion behaviour, filling the room with exceptional sound. Connection options are convenient via the screw terminal with IN-OUT for loop connections, while power adjustments via a rotary switch enable individual sound customisation.

This speaker offers the flexibility of low-impedance operation, allowing it to be optimised for different requirements. The magnetic grille and screw mounting system simplify installation and ensure an elegant appearance.

The speaker's housing, made of high-quality ABS plastic, not only promises long-lasting performance but also blends aesthetically into any environment.

Product	DL-S 15-100/T plus white-EN54
Artikel Nr.	20238242

Acoustics

Power	15/7.5/3.75 (8) W
Impedance (100V)	667/1333/2666 ohm
Speaker ø	100 mm
Frequency Range	100 - 16.900 Hz
Frequency Response	90 - 17.000 Hz
SPL 1W/1m, peak	91,6 dB
SPL 1W/4m, peak	79,6 dB
SPL Pmax/4m, peak	91,3 dB
SPL IEC268-5, 1W/1m	90,0 dB
SPL IEC268-5, Pmax/1m	100,5 dB
Sensitivity EN54-24, 1W/1m	88,7 dB
Sensitivity EN54-24, 1W/4m	76,0 dB
Dispersion -6dB, 500Hz	h/v 180°/180°
Dispersion -6dB, 1KHz	h/v 175°/175°
Dispersion -6dB, 2KHz	h/v 170°/160°
Dispersion -6dB, 4KHz	h/v 100°/35°

Connections and Housing

Connector	6-pin screw terminal
Temperature Range	-10 / +55 C°
Type A/B	A
Dimensions	242x108 mm
Ceiling Cut-out	210 mm
Weight (net)	1,6 kg
Housing	ABS
Colour	RAL 9016
Mounting	screw system
IP Rating	IP21

Certification

Ref. Nr.	024-15
ID-Code	SAA-LS15
Certificate Number	1438-CPR-1089

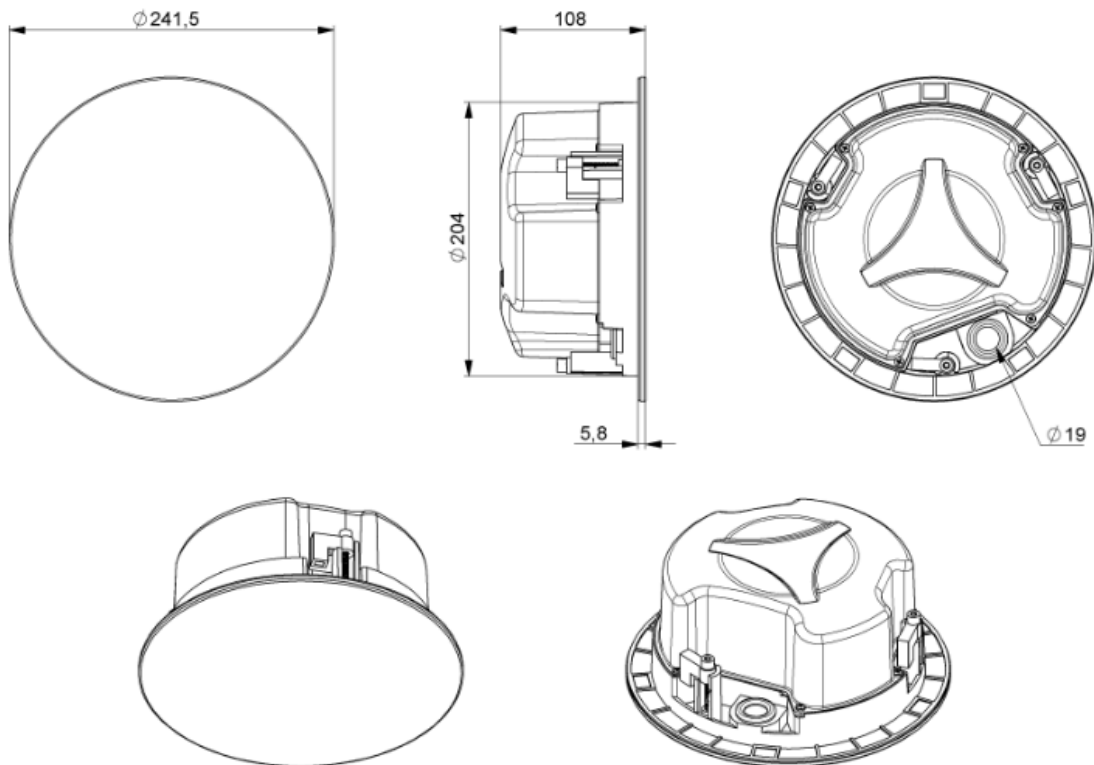
Product Attributes



Technical Drawing



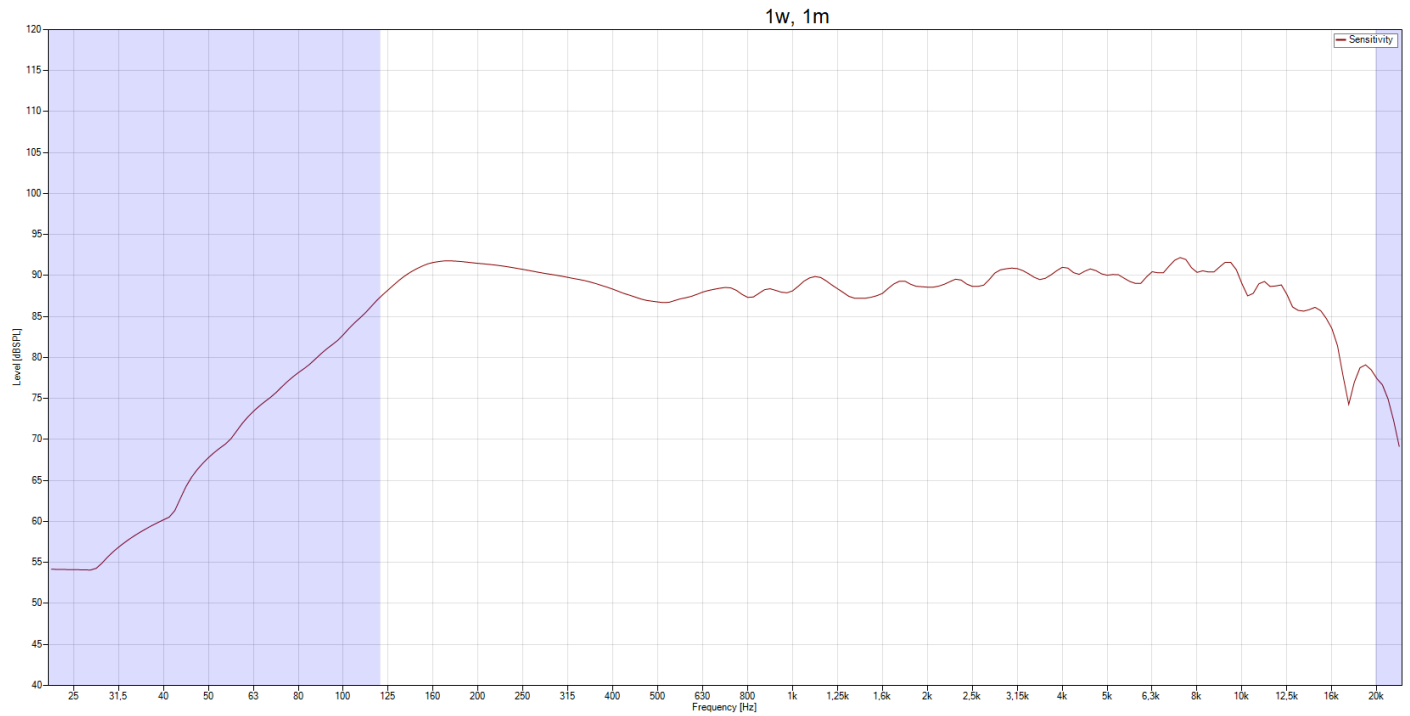
DL-S 15-100/T plus-EN54



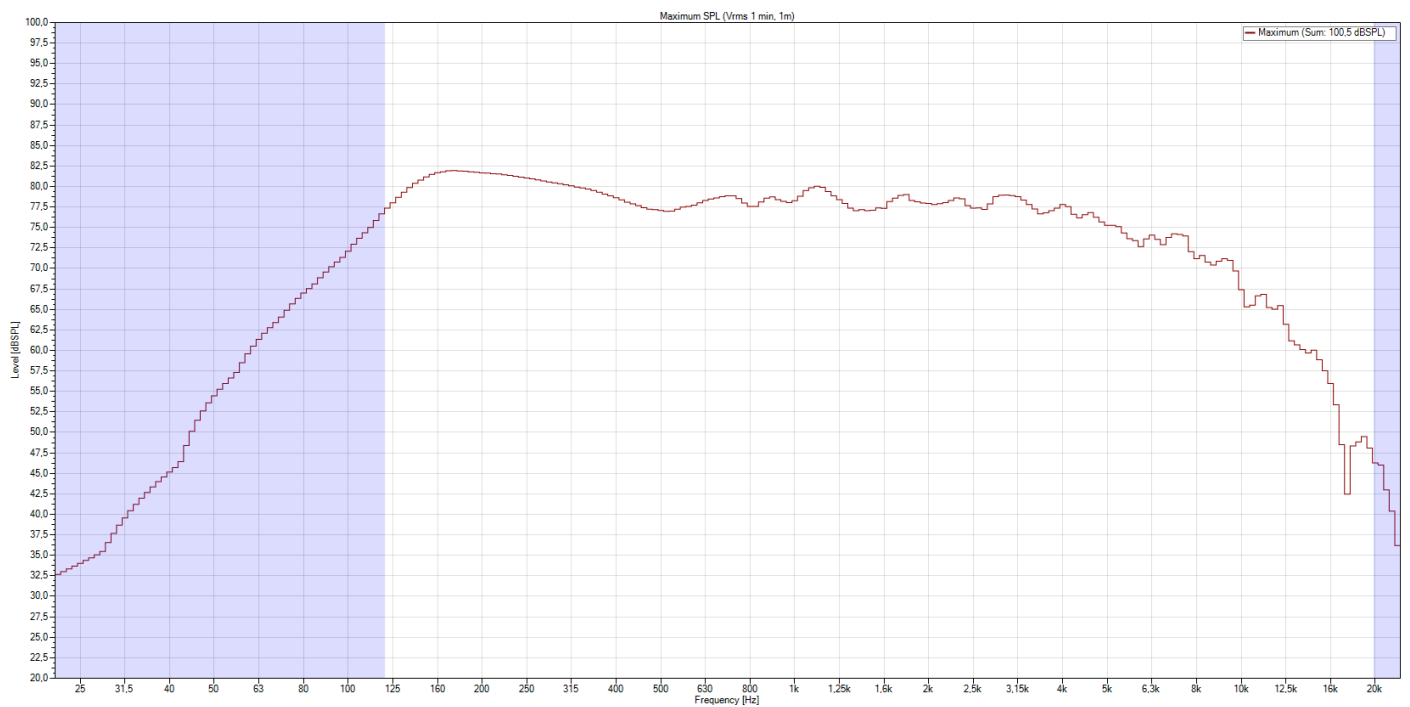
all dimensions are in mm

Frequency Response Diagram

Sensitivity

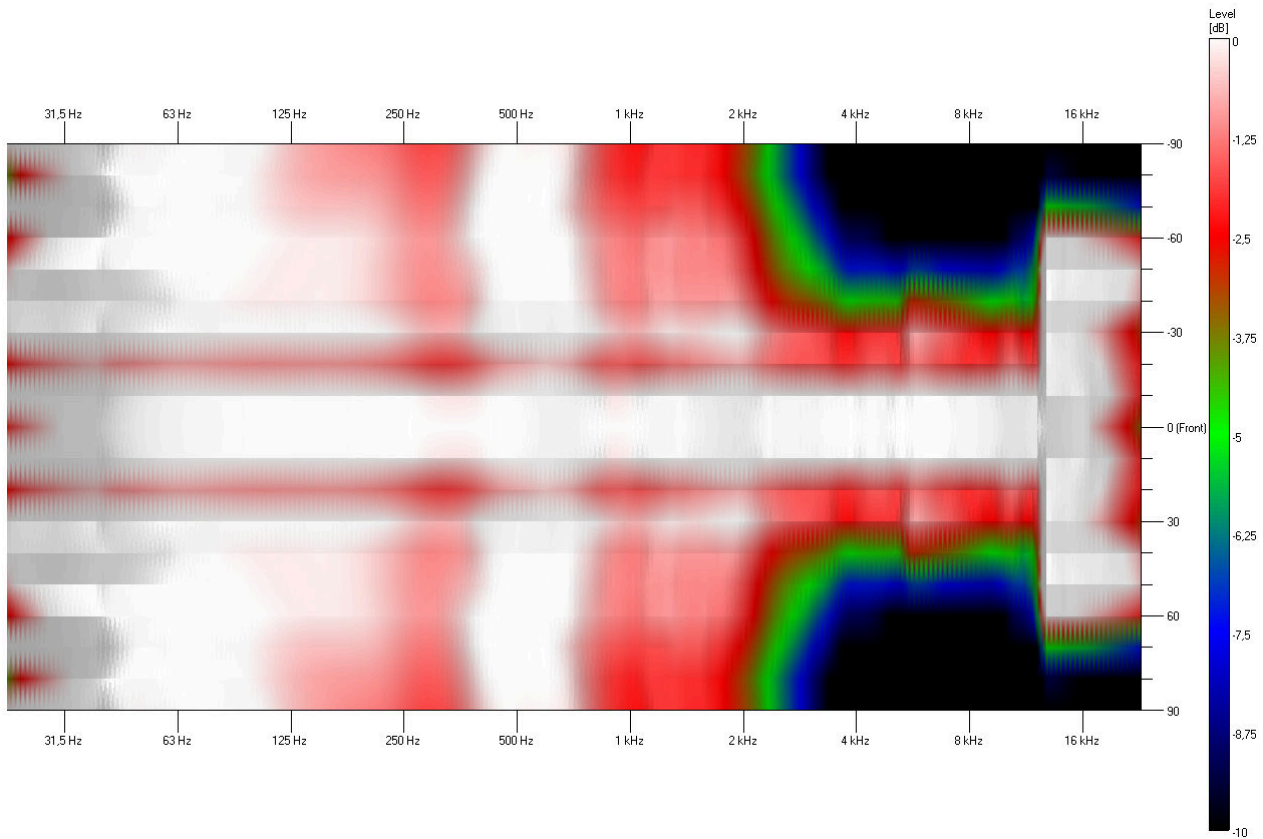


SPL Max

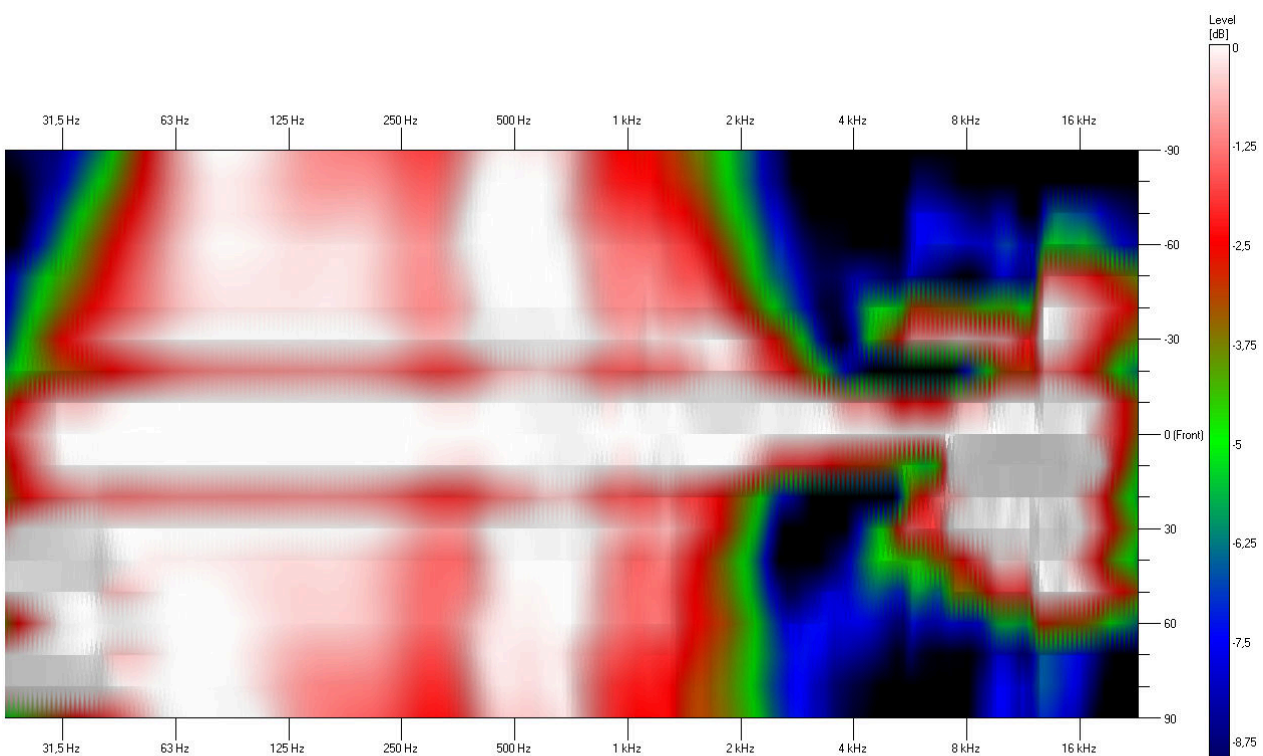


Isobar

Horizontal

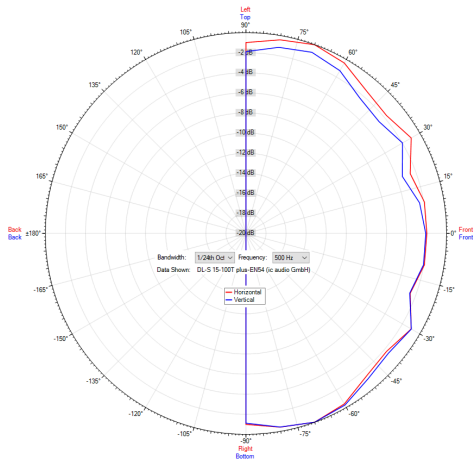


Vertical

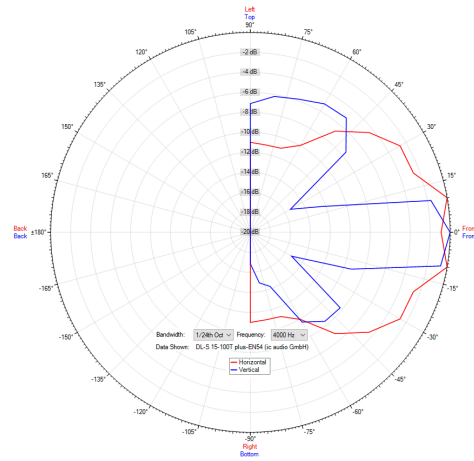


Polar Diagram

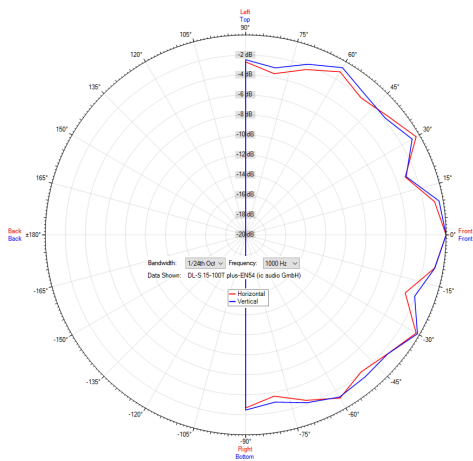
Polar Diagram 500Hz



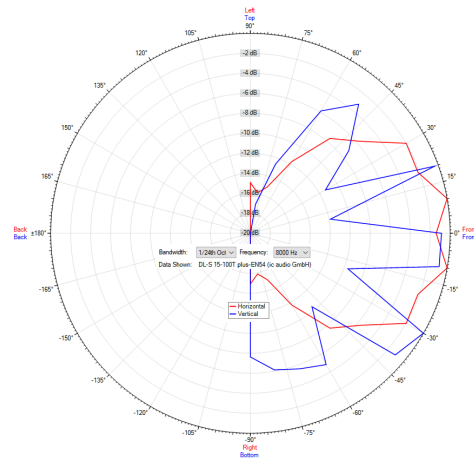
Polar Diagram 4000Hz



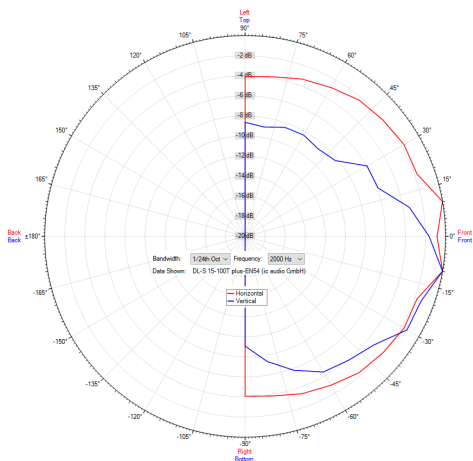
Polar Diagram 1000Hz



Polar Diagram 8000Hz



Polar Diagram 2000Hz



ic audio loudspeakers are tested and classified according to the IEC standard 60529 (degree of protection by enclosure) against the penetration of foreign objects and moisture. The classification is conforming to standards through characterization with a fixed code. This code consists of the letters IP (International Protection) followed by two digits. The first digit indicates the degree of protection against dust and the second digit the degree of protection against water. Please note that the testing of the products has been carried out in laboratory conditions which are not always 100% comparable with the conditions of different installation environments. This protection can be reduced due to normal wear and tear depending on the installation environment.

RoHS compliant (2011/65/EU)

The IP rating specified is based on ic audio test results, not on CNBOP-PIB test results. Certification only verifies the minimum requirements for EN54-24 compliance.



Artikel Nr. : 20238242

Packing Unit: 8

