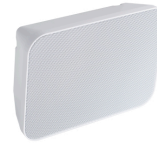


WA-S 06-165/T-EN54

Wall-mounted speaker for Voice Alarm, 6W power, certified EN 54-24



Technical Data

Colour	RAL 9016
Dimensions	252x182x70 mm
Dispersion -6dB, 500Hz	180° 180°
Dispersion -6dB, 1KHz	160° 160°
Dispersion -6dB, 2KHz	125° 125°
Dispersion -6dB, 4KHz	89° 89°
Sensitivity EN54-24, 1W/1m	91,0 dB
Sensitivity EN54-24, 1W/4m	79,0 dB
Frequency Range	210 - 21.800 Hz
Frequency Response	184 - 23.300 Hz
SPL IEC268-5, 1W/1m	92,7 dB
SPL EN54-24, Pmax/4m	88,8 dB
Power	6/3 /1.5 W



WA-S 06-165/T-EN54

Mounting Instruction

1. Remove the magnetically fixed grille with the enclosed mounting hook.
2. Feed the speaker cable through the cable gland into the speaker housing.
3. Connect the loudspeaker cable to the connection terminal of the loudspeaker.
4. Fix the speaker to the wall in the desired orientation using the enclosed screws.
5. The following alignment positions are available:
 - **Horizontal alignment on the wall**, the sound dispersion of the speaker is diagonally downwards.
 - **Horizontal alignment between two walls** and the ceiling, the sound dispersion of the speaker is also downwards (3 corner mount)
 - **Vertical alignment in a corner** between two walls (corner mount)
6. **Optionally**, you can use two WA-S speakers to achieve bi-directional sound dispersion. To do this, mount one WA-S in vertical alignment, symmetrically mirrored to the second WA-S in vertical alignment.
 - Use the 12 target drilling points on the inside of the housing. Depending on the desired mounting position, drill through the 4 suitable drill points and insert the screws. Tighten the screws carefully.
7. Put the loudspeaker grille back in place.



25

CE-Symbol according to 93/68EWG
Measurements according to DIN IEC 268-5
RoHS compliant (2011/65/EU)
CPR compliance according 305/2011/EU

Loudspeaker for voice alarm systems for fire
detection and fire alarm systems for buildings
ic audio GmbH, Boehringerstraße 14A
D-68307 Mannheim, Germany

EN54-24:2008
:
:
1438-CPR-0984

TO MAKE PEOPLE LISTEN