



## MS 50-165/T black-EN54

- Distinctive design
- Excellent sound
- IP 65



EN 54-24:2008  
**Ref. Nr.:** 011-13  
**ID-Code:** SAA-LS11  
 1438-CPR-0998

ic audio GmbH, Boehringerstraße 14a,  
 D-68307 Mannheim, Germany

CE-Symbol gemäß Richtlinie 93/68EWG

### Technical Data (Electrical)

Description	MS 50-165/T black-EN54
Power	50/25/12,5/6,25 (8ohm) W
Impedance (100V)	200/400/800/1600 ohm
Frequency Range	52 - 24.000 Hz
Frequency Response	48 - 25.000 Hz
SPL IEC268-5, 1W/1m	84,8 dB
SPL EN54-24, Pmax/4m	91,0 dB
Sensitivity EN54-24, 1W/4m	72,8 dB
Sensitivity EN54-24, 1W/1m	84,8 dB
Dispersion -6dB, 500Hz	360° (h) 360° (v)
Dispersion -6dB, 1KHz	200° (h) 155° (v)

Dispersion -6dB, 2KHz	110° (h) 120° (v)
-----------------------	----------------------

Dispersion -6dB, 4KHz	80° (h) 25° (v)
-----------------------	--------------------

## Technical Data (Mechanical)

Dimensions	326x202x192 mm
------------	----------------

IP Rating	IP65
-----------	------

Weight (net)	3,65 kg
--------------	---------

Temperature Range	-25 / +70 °C
-------------------	--------------

Mounting	Swivel bracket
----------	----------------

Connector	6-pin screw terminal
-----------	----------------------

Terminal Diameter	2,5 mm
-------------------	--------

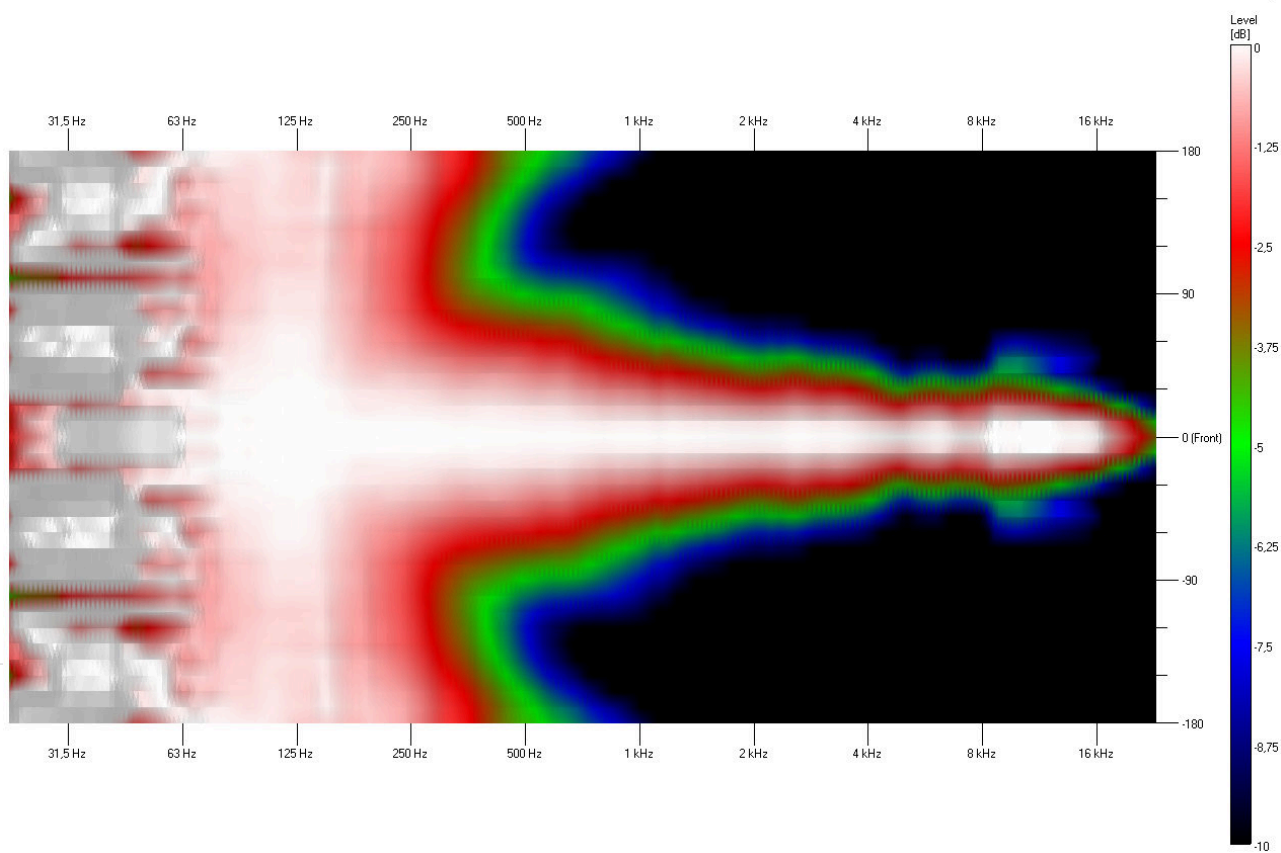
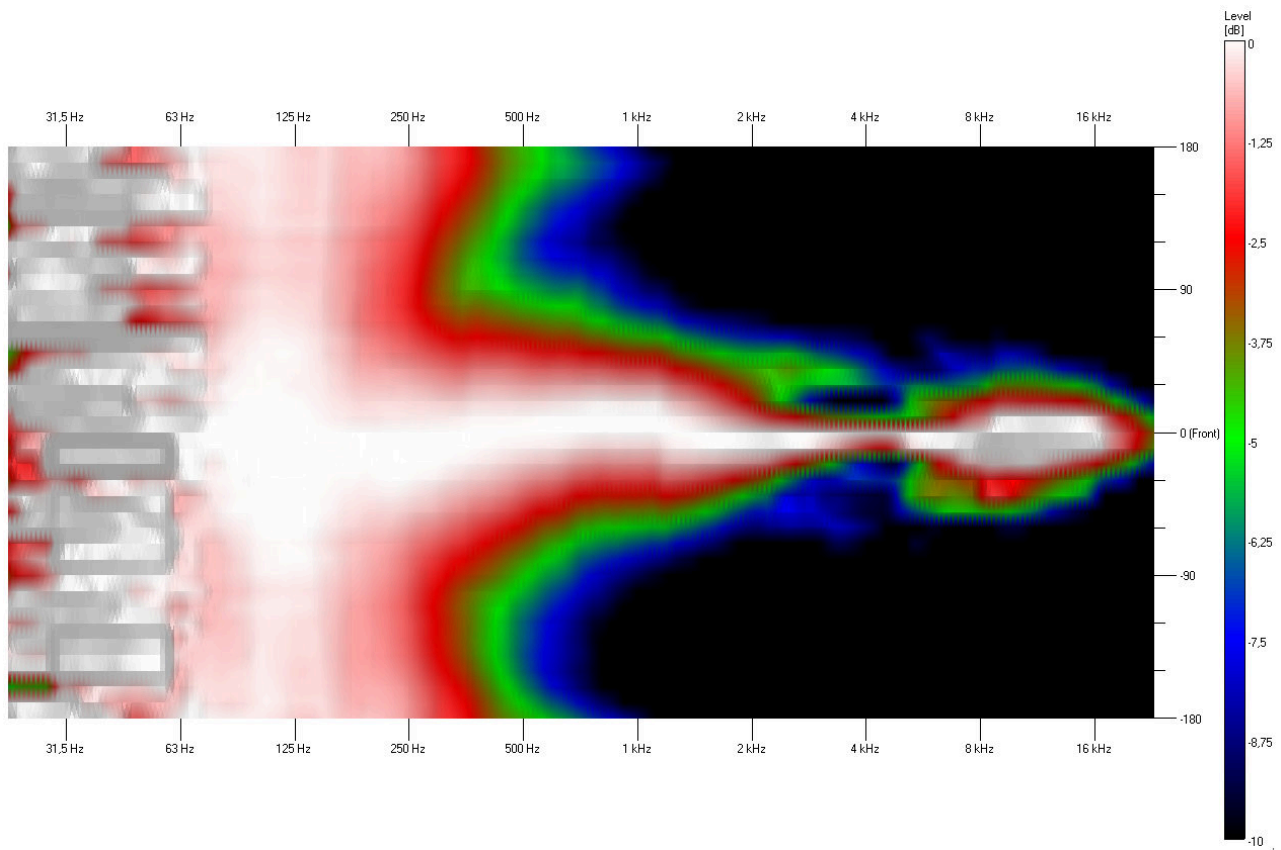
Maximum Cable Passage	4,9 mm <sup>2</sup>
-----------------------	---------------------

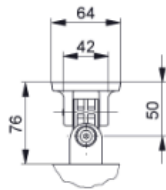
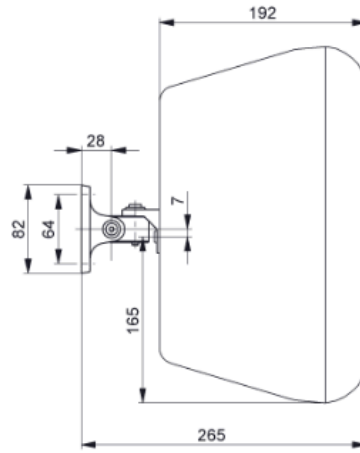
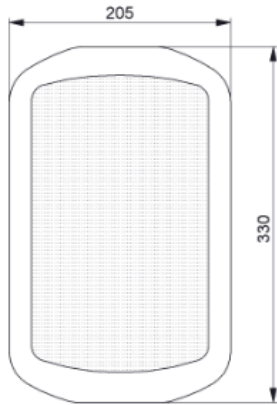
Colour	black
--------	-------

## Product Attributes

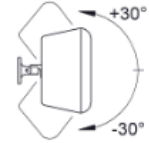


## Technical Diagrams





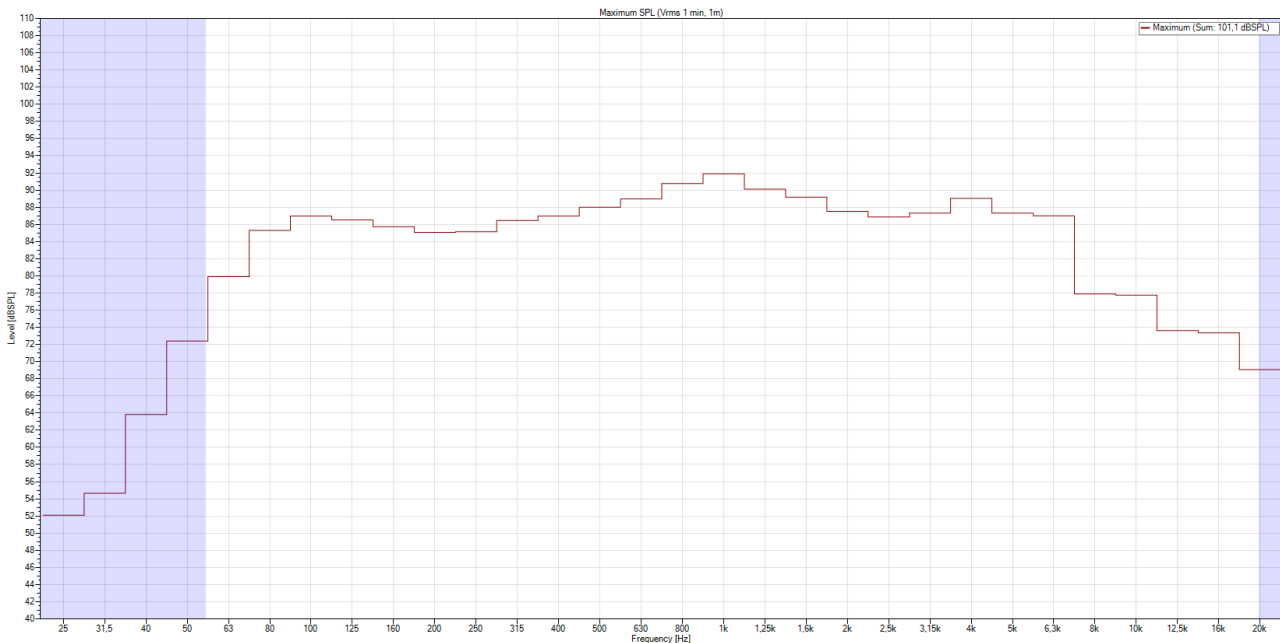
Horizontal plane  
in steps of 10°

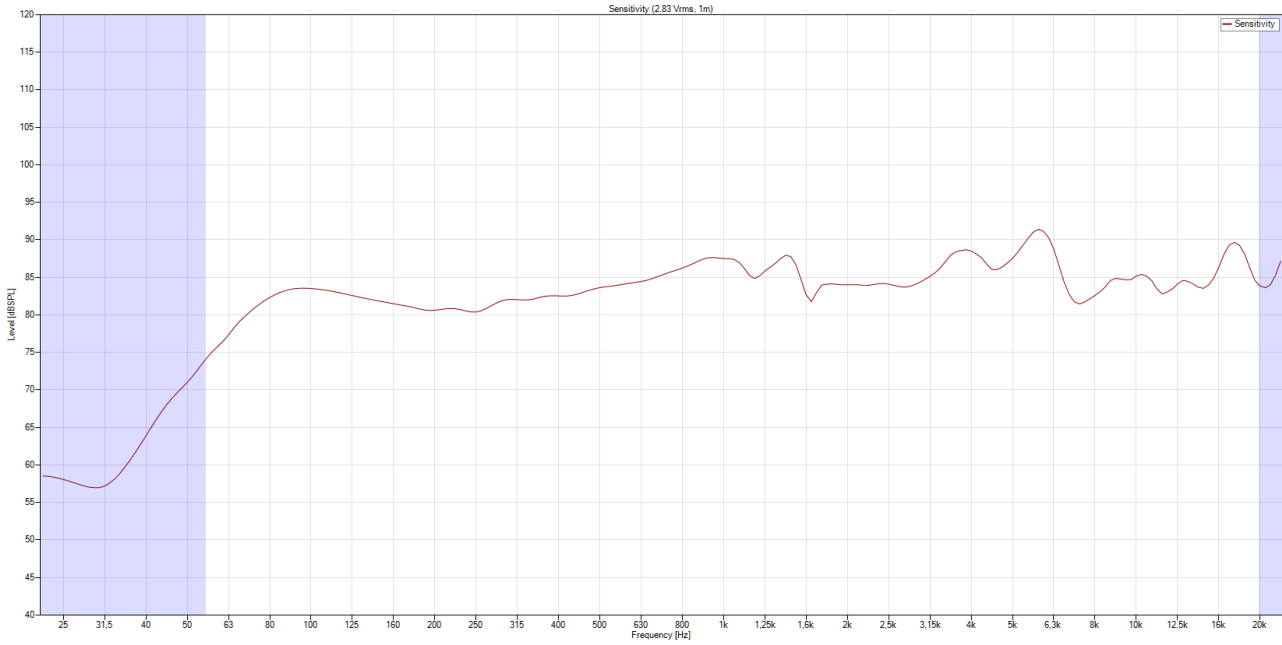


Vertical plane  
in steps of 10°

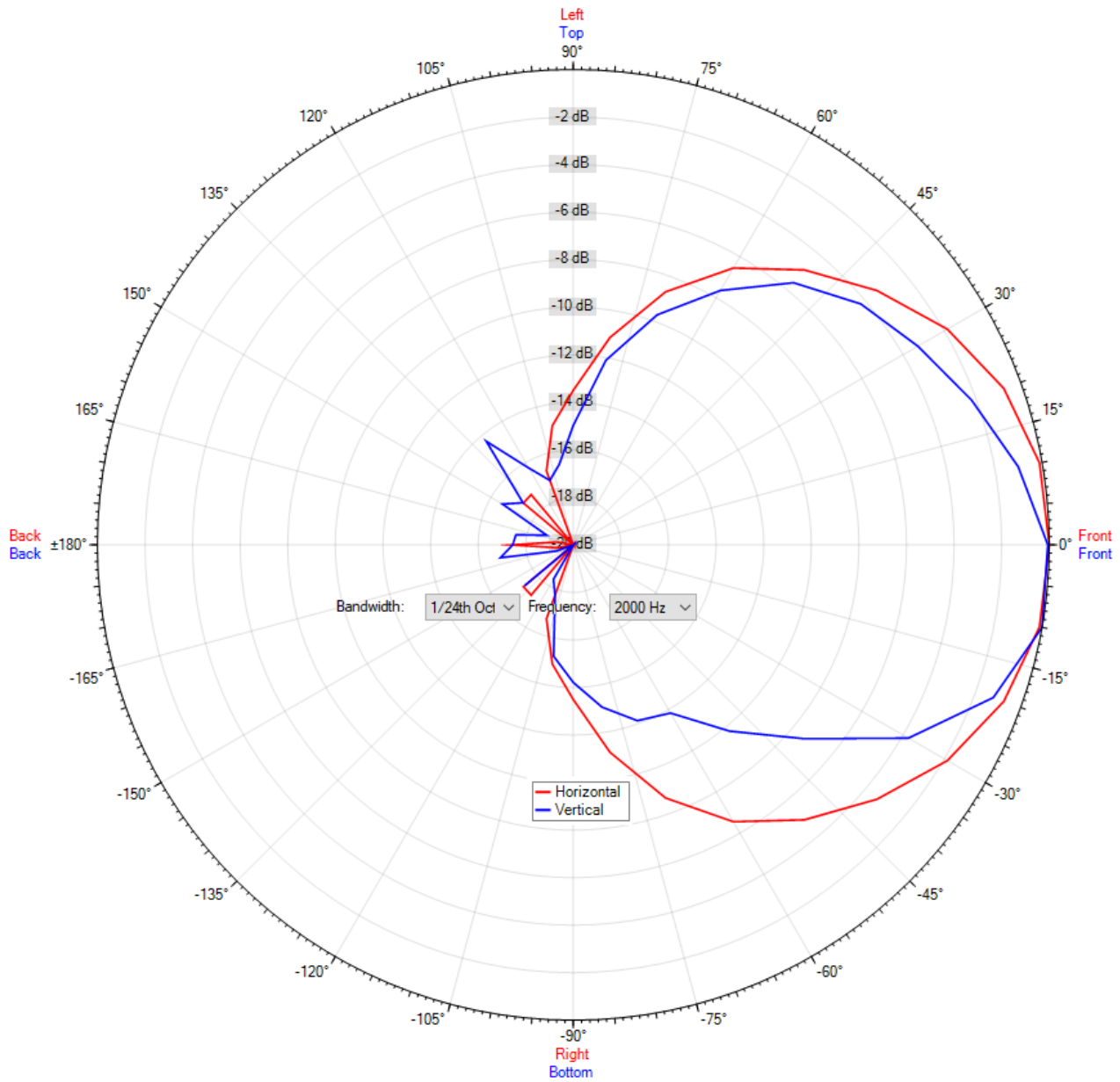
all dimensions are in mm

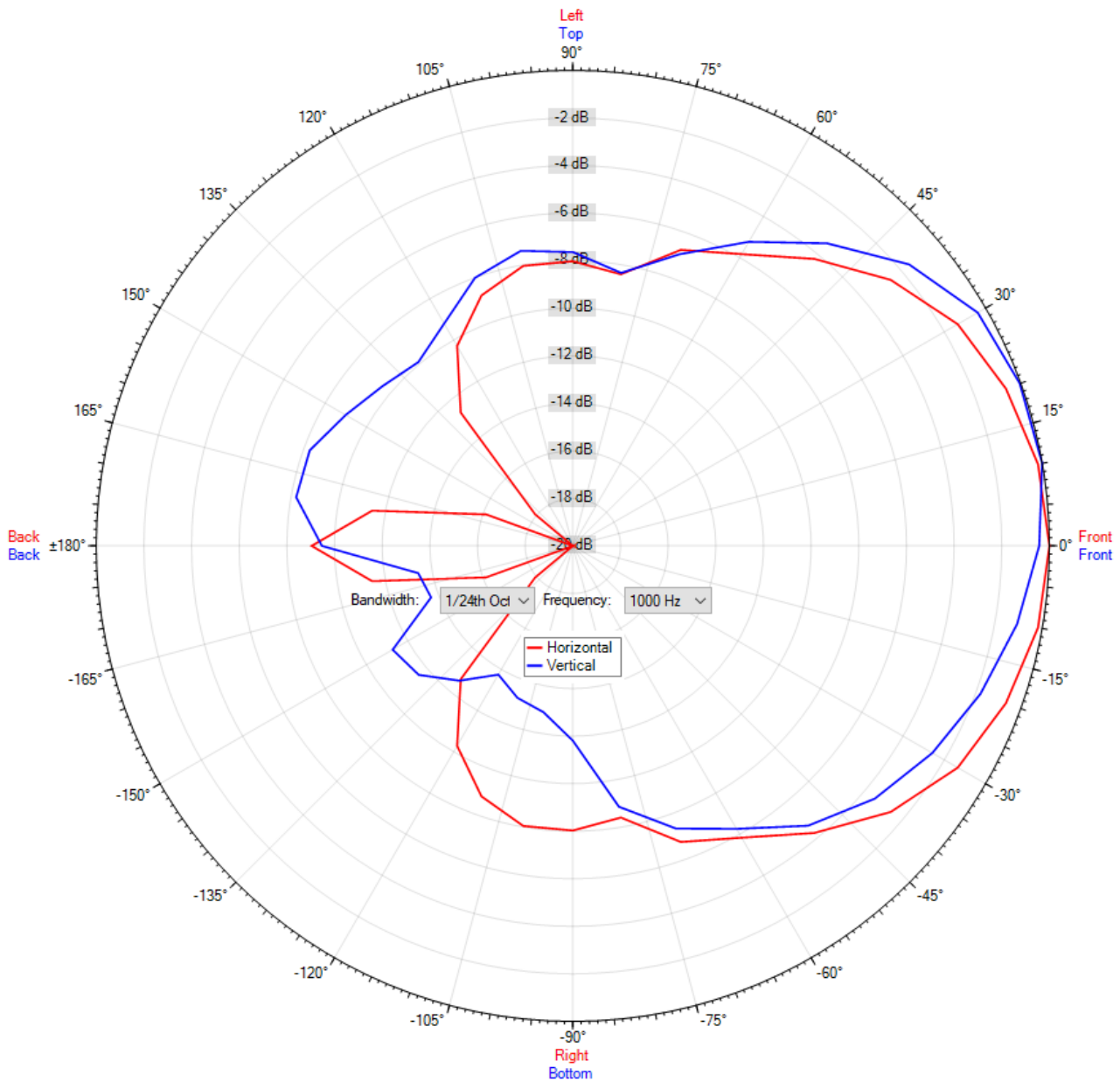
## Frequency Response Diagrams

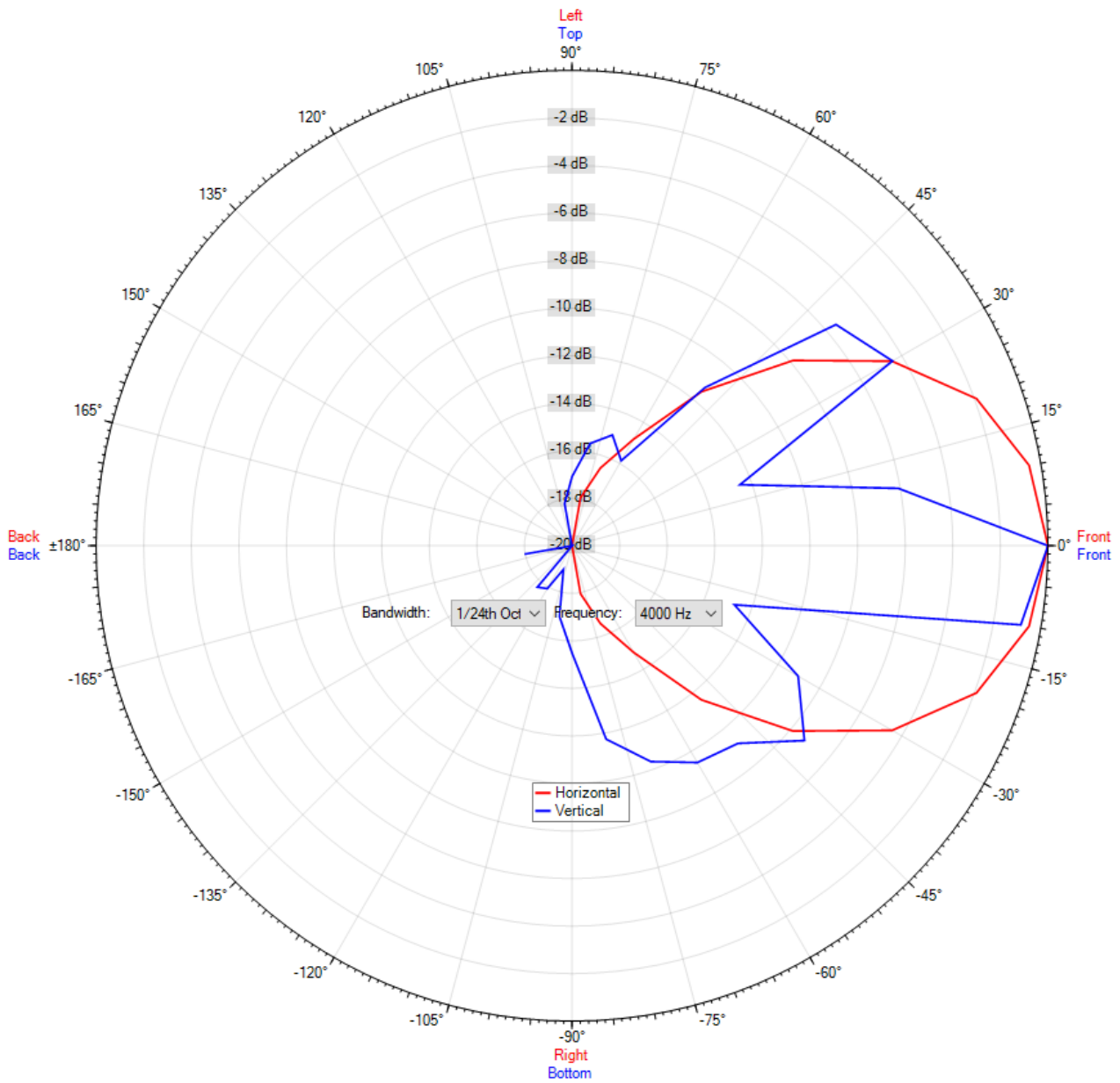




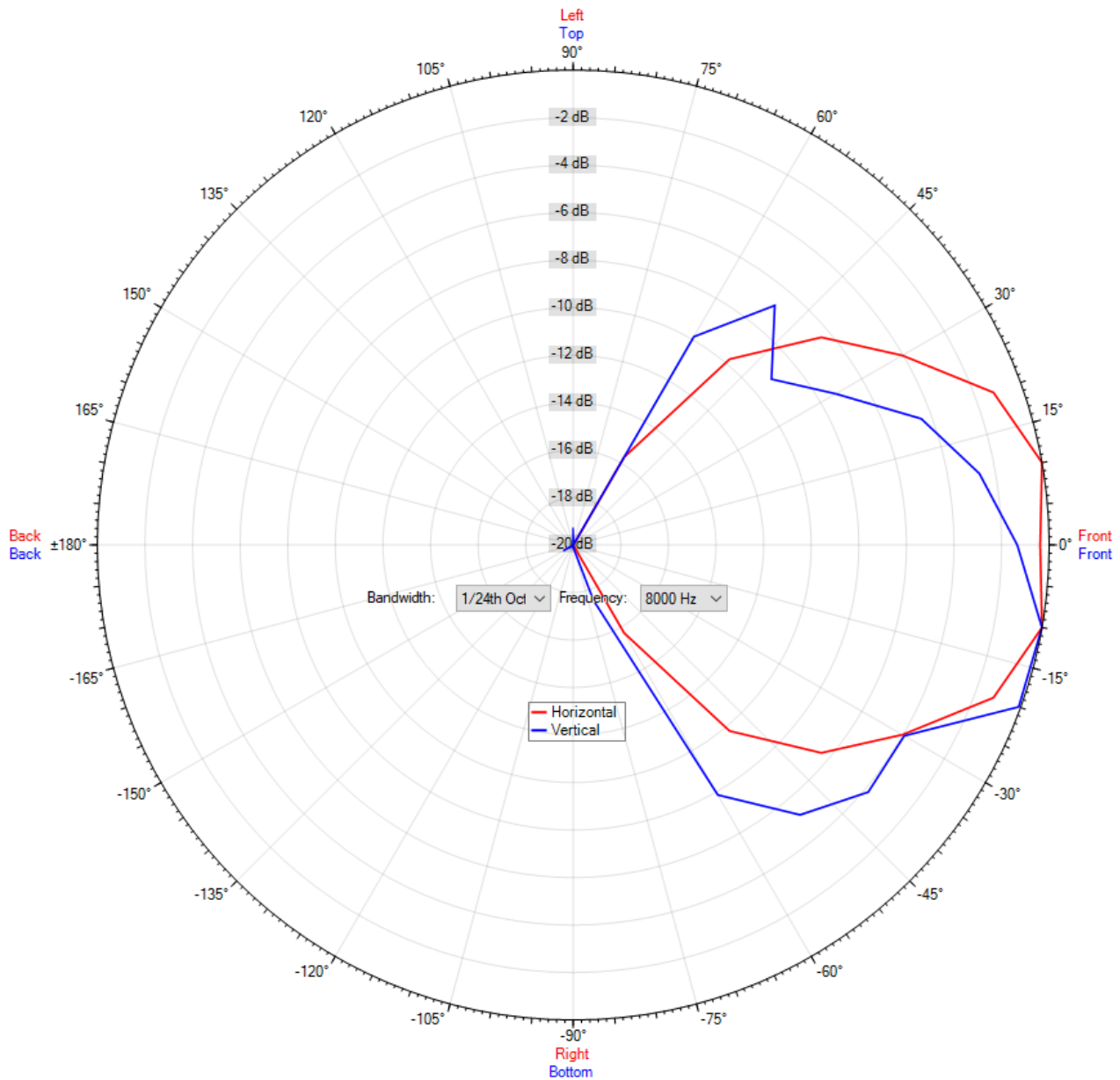
## Polar Diagrams

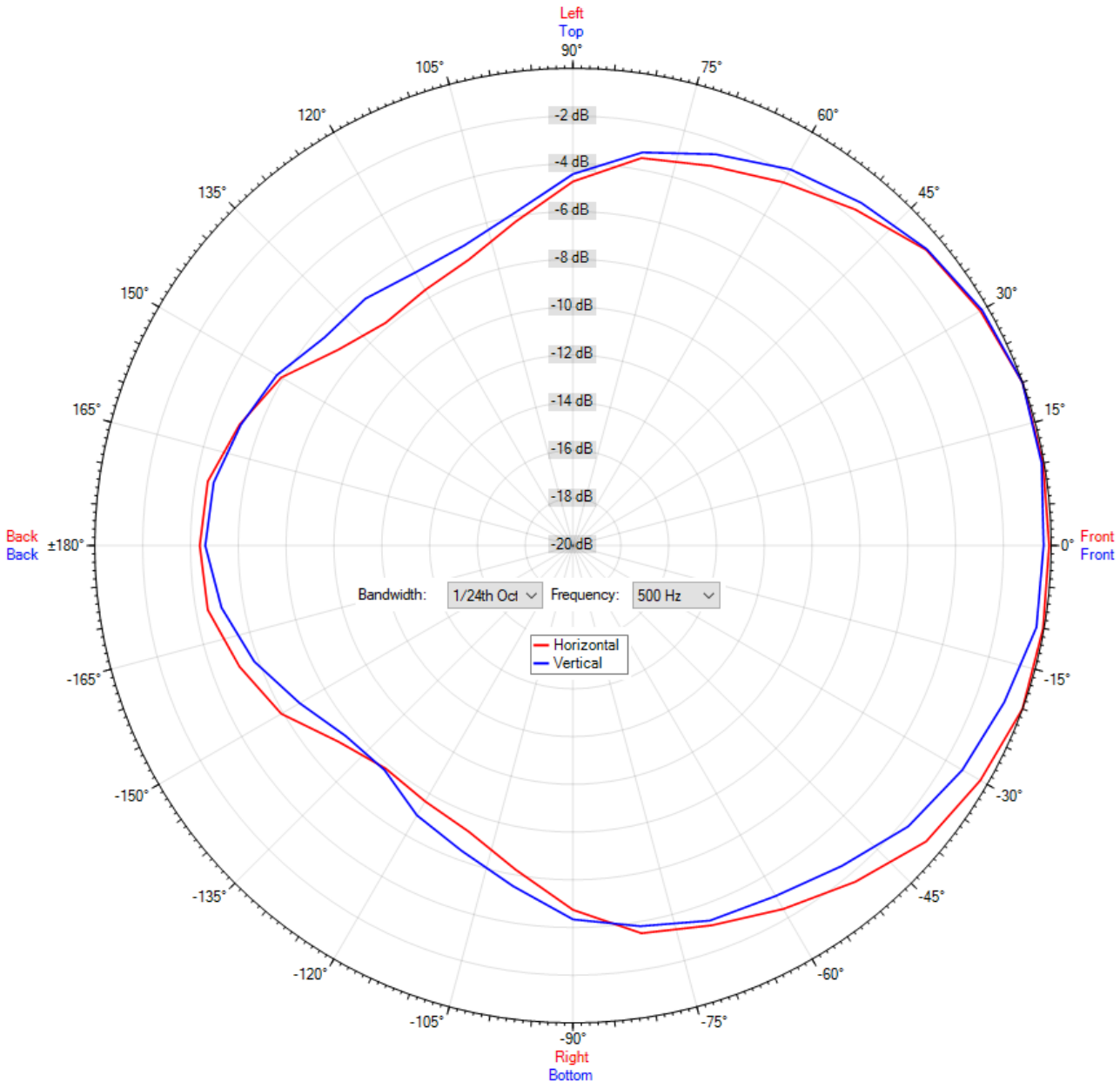












ic audio loudspeakers are tested and classified according to the IEC standard 60529 (degree of protection by enclosure) against the penetration of foreign objects and moisture. The classification is conforming to standards through characterization with a fixed code. This code consists of the letters IP (International Protection) followed by two digits. The first digit indicates the degree of protection against dust and the second digit the degree of protection against water. Please note that the testing of the products has been carried out in laboratory conditions which are not always 100% comparable with the conditions of different installation environments. This protection can be reduced due to normal wear and tear depending on the installation environment.

RoHS compliant (2011/65/EU)

The IP rating specified is based on ic audio test results, not on CNBOP-PIB test results. Certification only verifies the minimum requirements for EN54-24 compliance.

**Article Nr.:** 20122648

**Packing Unit:** 4

