



DL-FF 06-165/T-EN54

- quick mounting
- built-in dome for concrete ceilings
- ballproof



EN 54-24:2008
Ref. Nr.: 014-14
ID-Code: SAA-LS14
 1438-CPR-0384

ic audio GmbH, Boehringerstraße 14a,
 D-68307 Mannheim, Germany

CE-Symbol gemäß Richtlinie 93/68EWG

Technical Data (Electrical)

| Description | DL-FF 06-165/T-EN54 |
|----------------------------|---------------------|
| Power | 6/3/1,5 W |
| Impedance (100V) | 1667/3333/6667 ohm |
| Frequency Range | 125 - 23.500 Hz |
| Frequency Response | 100 - 23.500 Hz |
| SPL IEC268-5, 1W/1m | 92,0 dB |
| SPL EN54-24, Pmax/4m | 90,0 dB |
| Sensitivity EN54-24, 1W/4m | 80,0 dB |
| Sensitivity EN54-24, 1W/1m | 92,0 dB |
| Dispersion -6dB, 500Hz | h/v 180° |
| Dispersion -6dB, 1KHz | h/v 180° |
| Dispersion -6dB, 2KHz | h/v 97,5° |

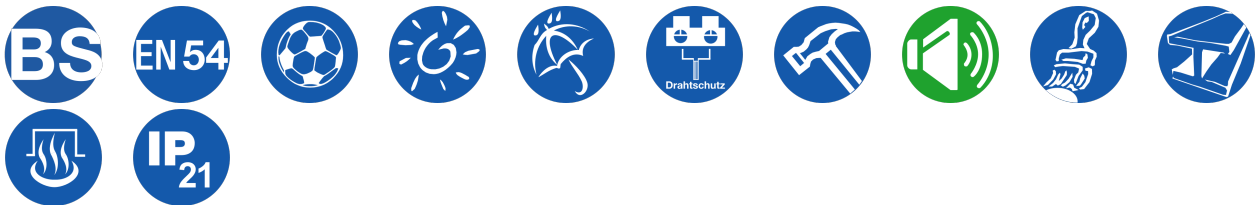
Dispersion -6dB, 4KHz h/v 44°

Please note: Because of many different types of ceiling materials and ceiling strengths we recommend to build in a sample of the speaker to match the requirements accurately.

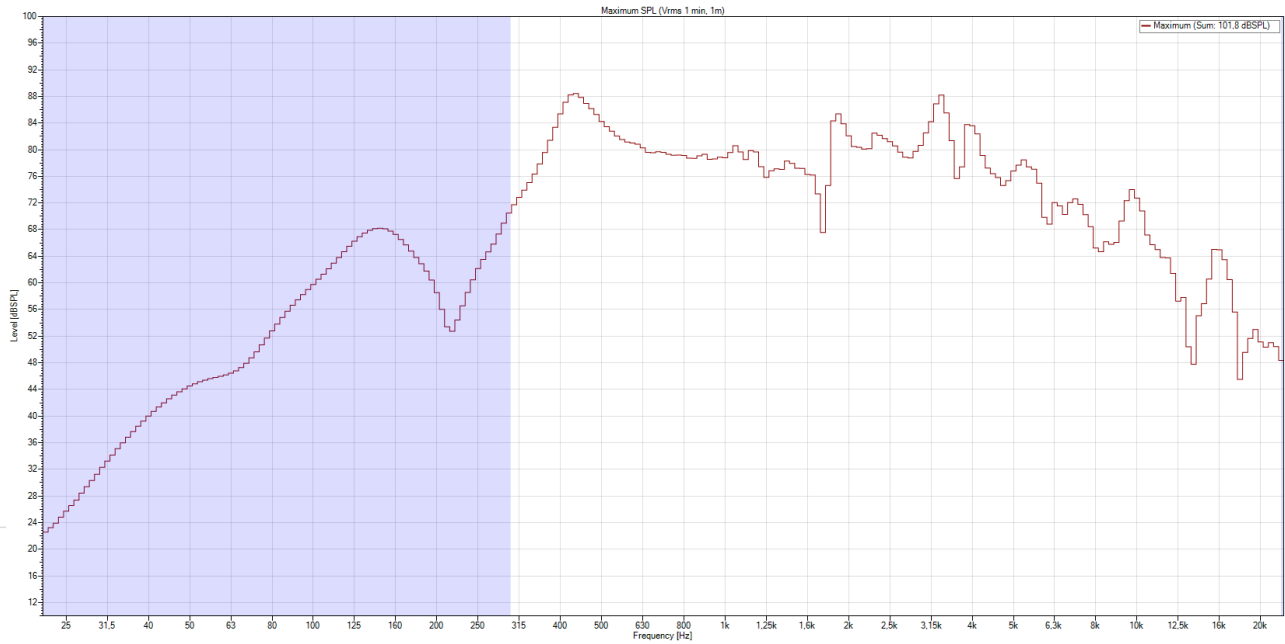
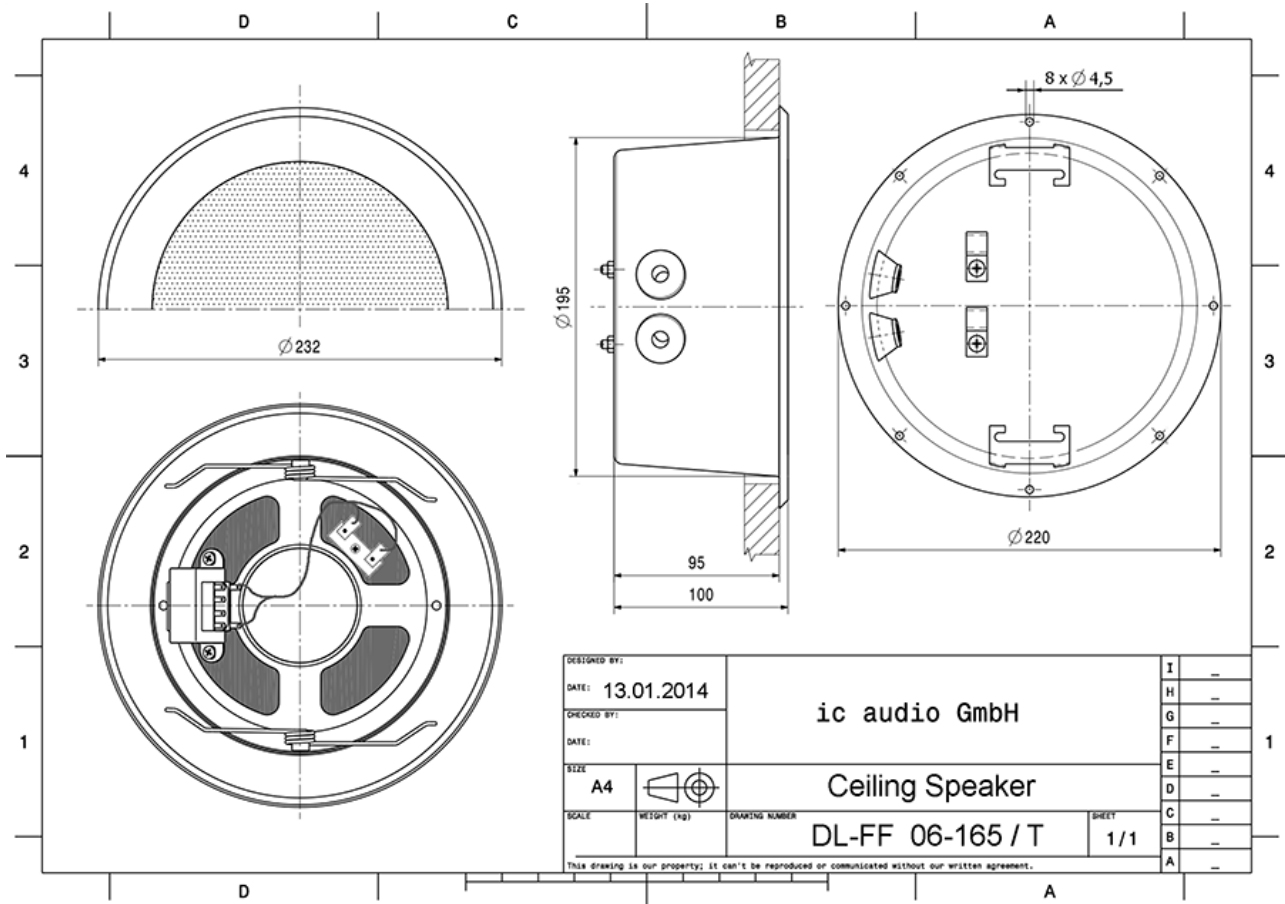
Technical Data (Mechanical)

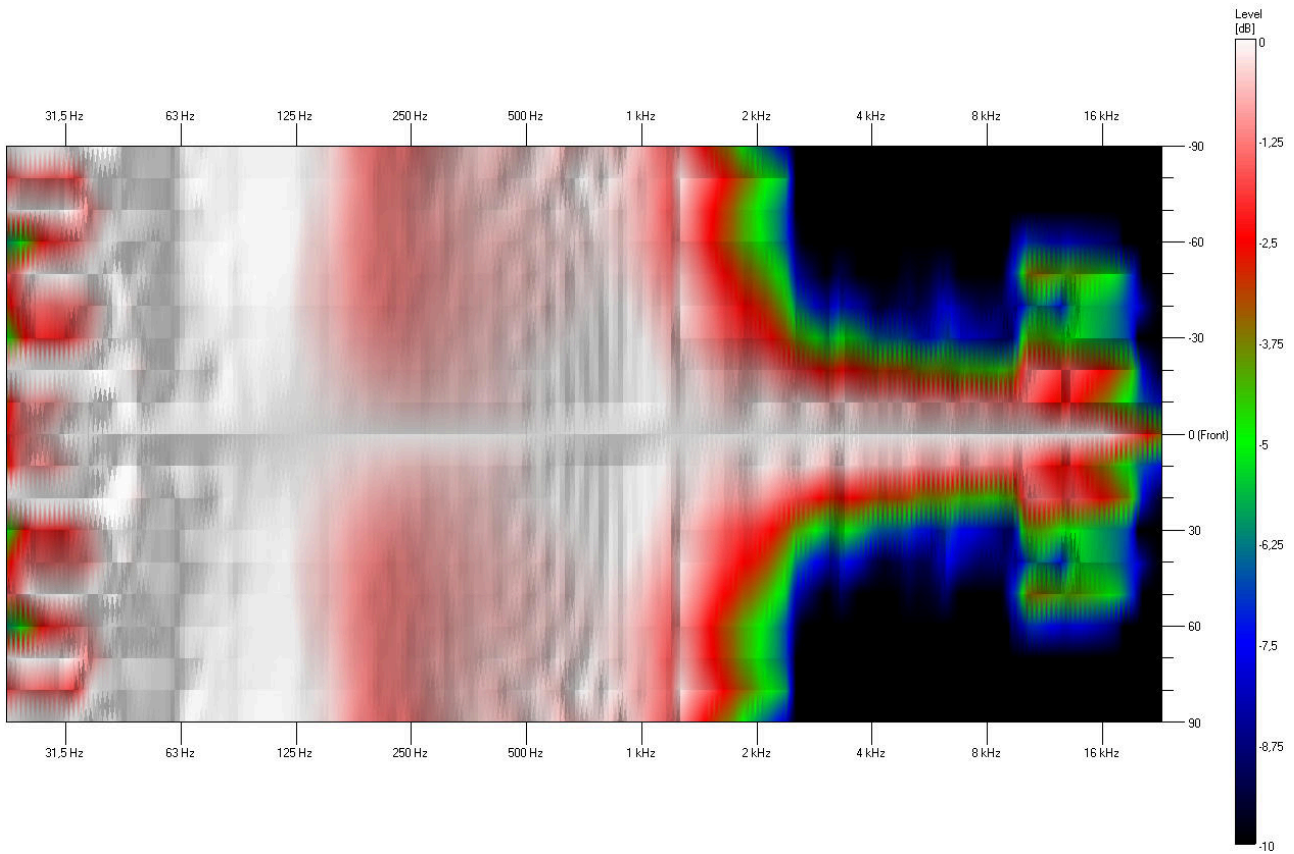
| | |
|-----------------------|---------------------|
| Dimensions | 230x98,5 mm |
| IP Rating | IP21 |
| Weight (net) | 1,65kg |
| Ceiling Cut-out | 201 mm |
| Temperature Range | -10 / +55 C° |
| Mounting | Quick fit mounting |
| Connector | 2-pin ceramic block |
| Terminal Diameter | 3,2 mm |
| Maximum Cable Passage | 8 mm ² |
| Colour | RAL 9010 |

Product Attributes



Technical Diagrams

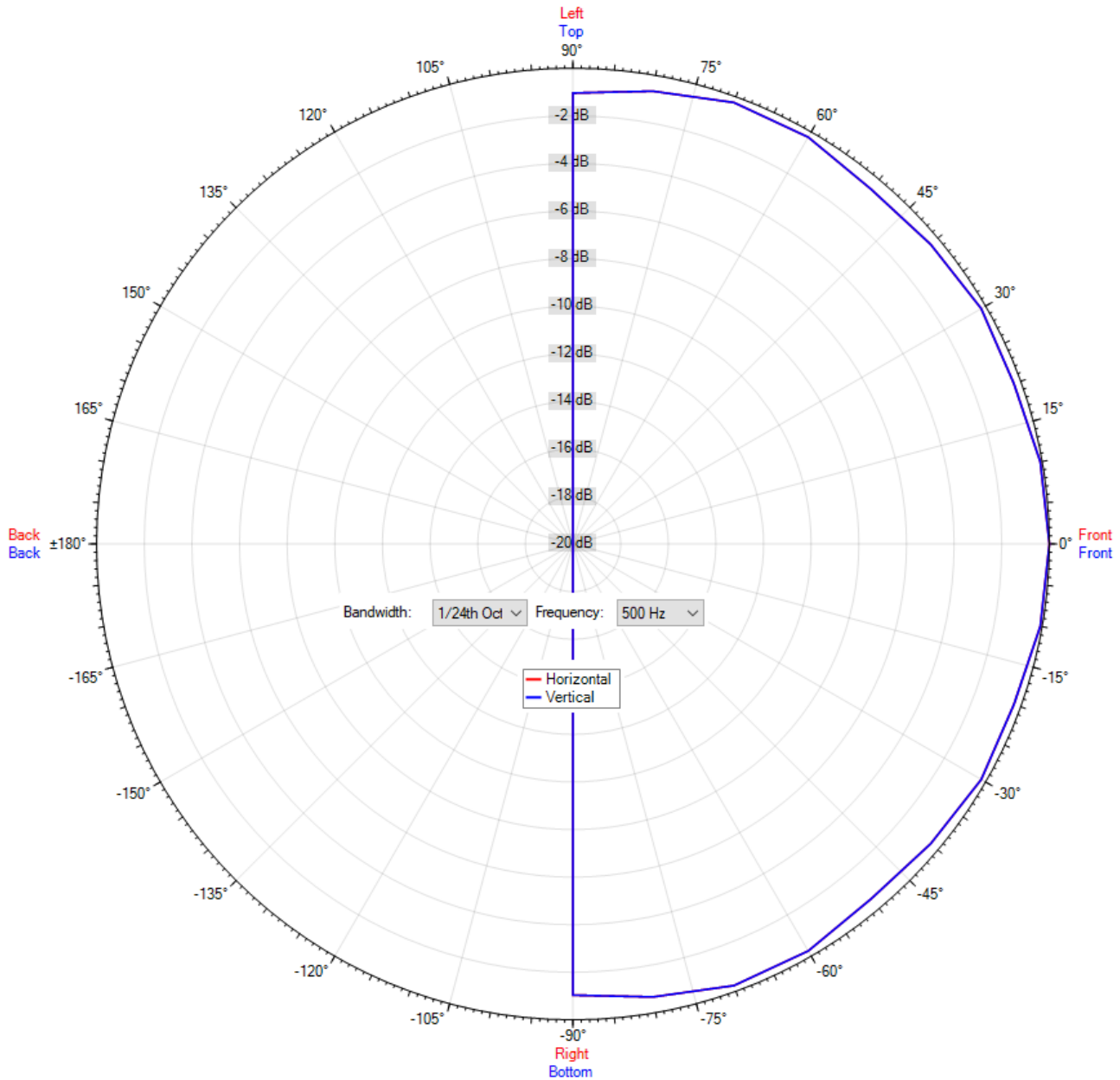


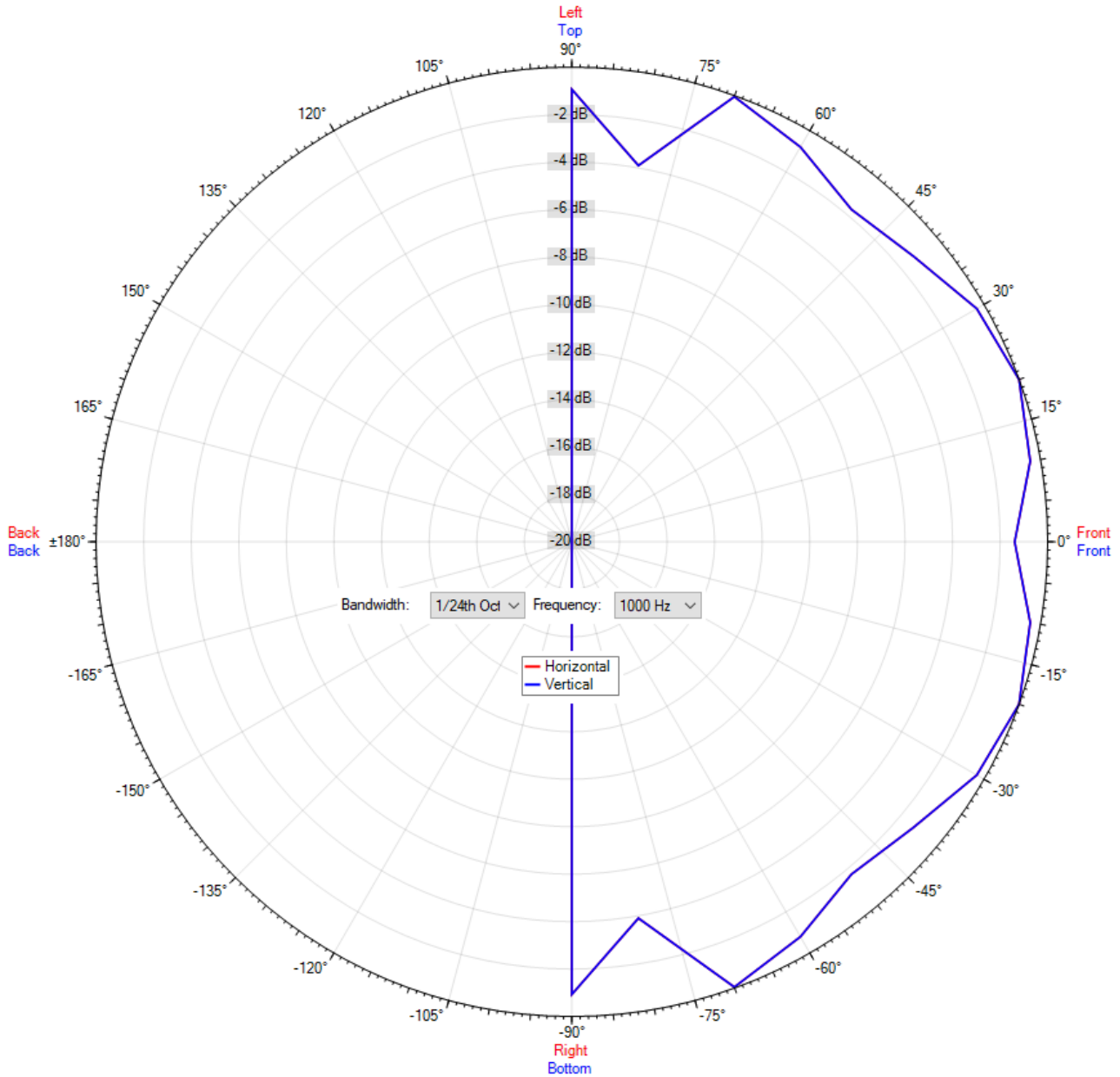


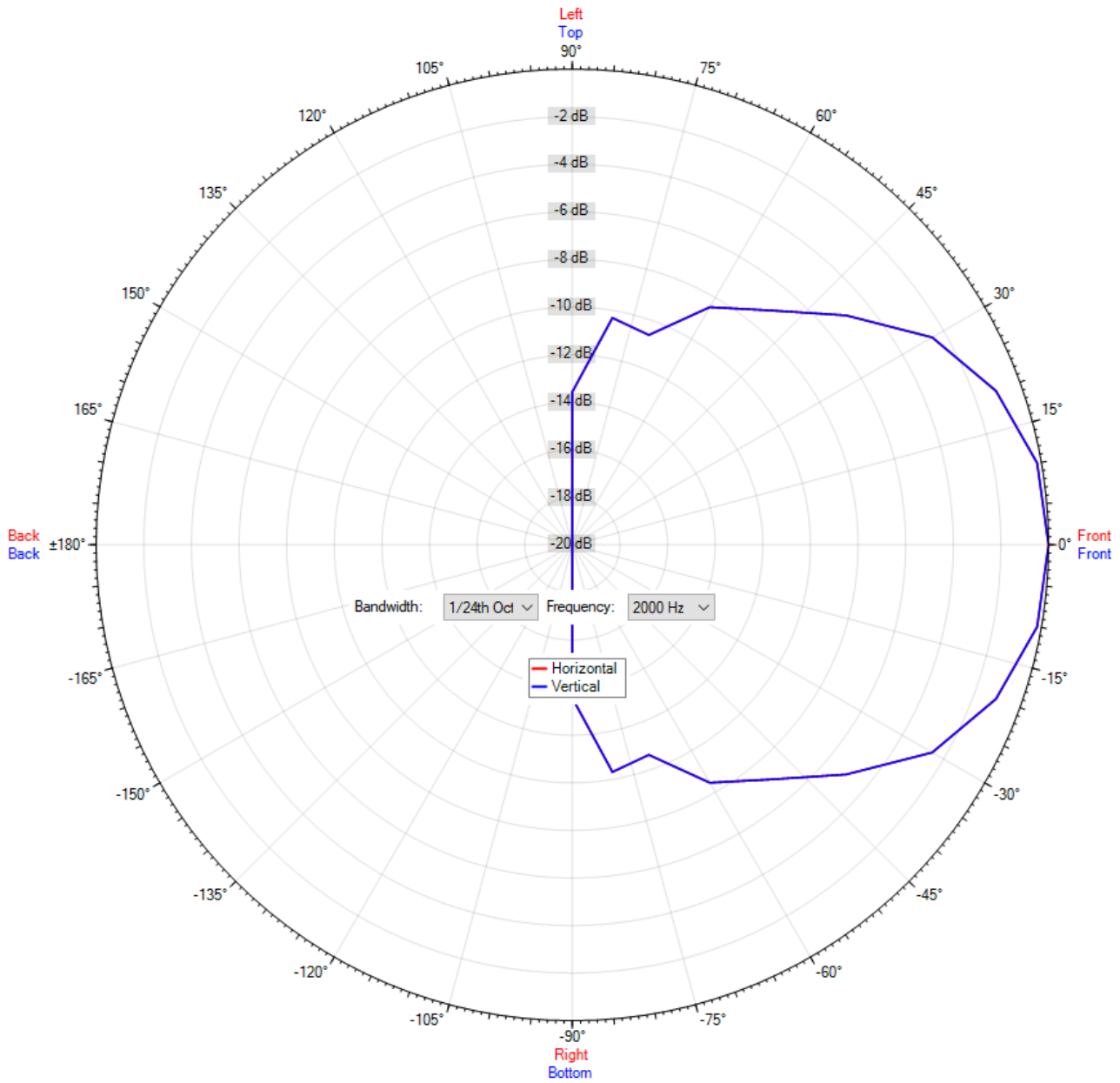
Frequency Response Diagrams

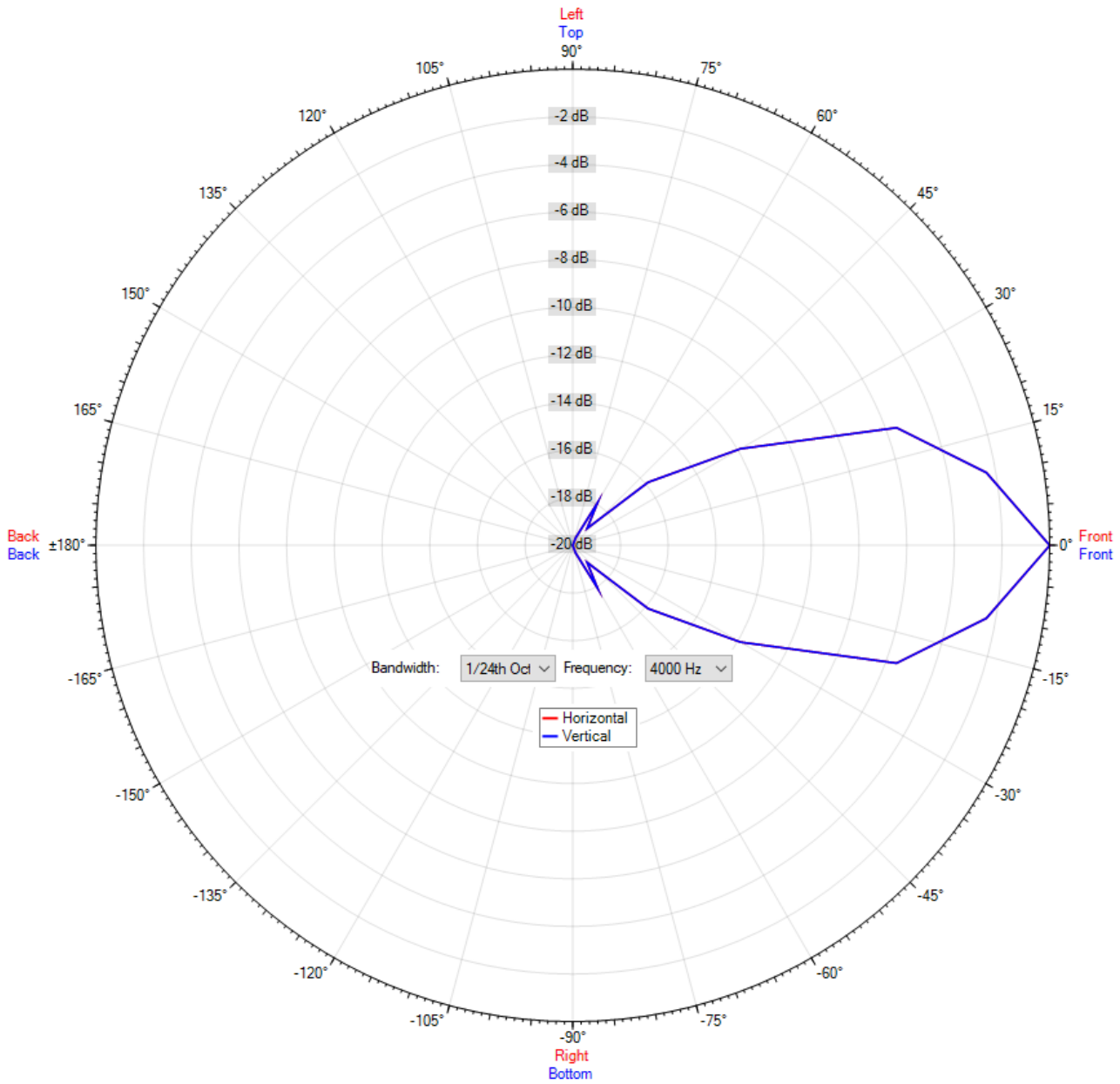


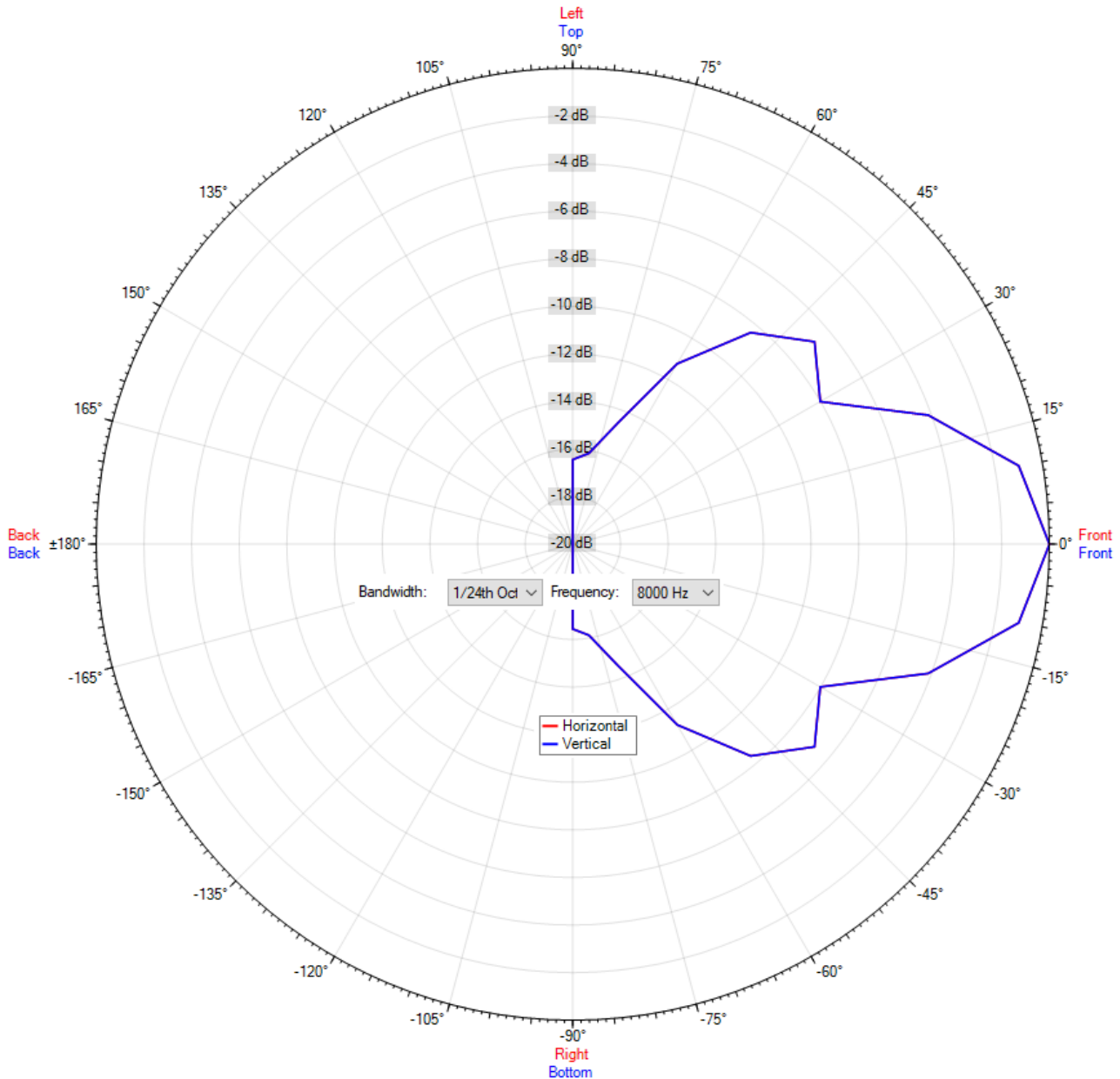
Polar Diagrams











ic audio loudspeakers are tested and classified according to the IEC standard 60529 (degree of protection by enclosure) against the penetration of foreign objects and moisture. The classification is conforming to standards through characterization with a fixed code. This code consists of the letters IP (International Protection) followed by two digits. The first digit indicates the degree of protection against dust and the second digit the degree of protection against water. Please note that the testing of the products has been carried out in laboratory conditions which are not always 100% comparable with the conditions of different installation environments. This protection can be reduced due to normal wear and tear depending on the installation environment.

RoHS compliant (2011/65/EU)

The IP rating specified is based on ic audio test results, not on CNBOP-PIB test results. Certification only verifies the minimum requirements for EN54-24 compliance.

Article Nr.: 20142814

Packing Unit: 8

